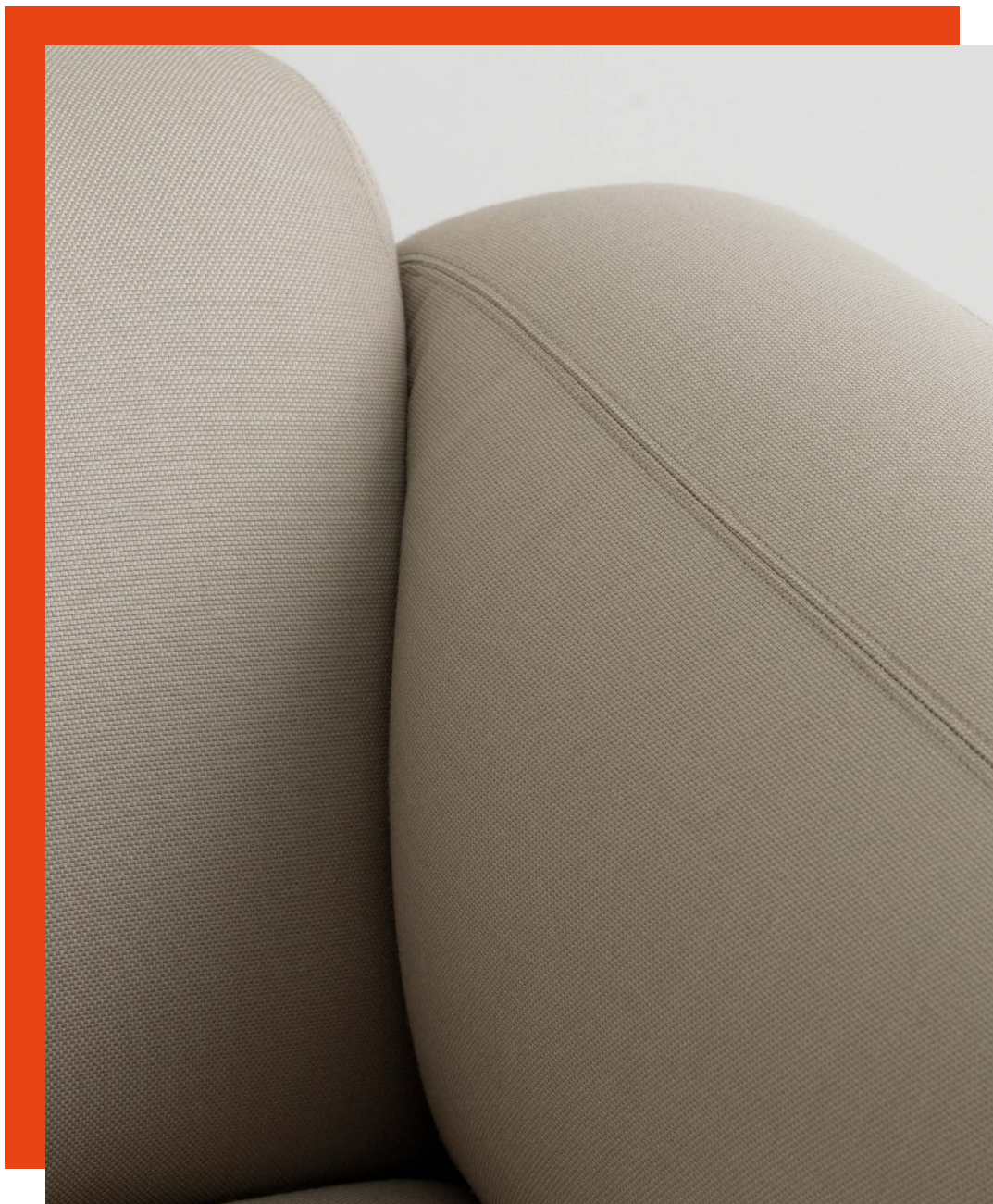


Material guide



normann
C O P E N H A G E N

Normann Copenhagen is a Danish design company with the mission to create original and innovative products in a simple and contemporary design that withstands the test of time. Or in other words, to challenge conventional thinking and make the ordinary extraordinary through great design.

Established in 1999 by Jan Andersen and Poul Madsen, the Normann Copenhagen brand encompasses a wide and continuously growing collection of furniture, lighting, textiles and home accessories.

Content



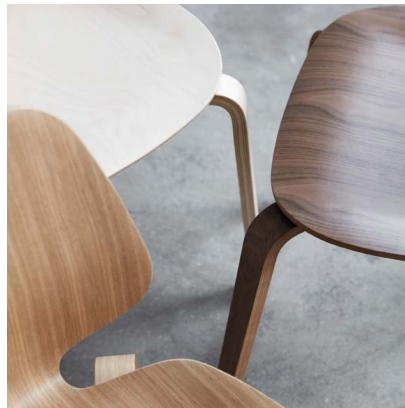
Introduction 6

Colors 8

- 8 Striking reds
- 10 Blue waves
- 12 Earthy notes
- 14 Soft neutrals
- 16 Cool grays

Textiles 18

- 20 Main Line Flax
- 26 Synergy
- 32 Zap
- 36 Yoredale
- 40 Aquarius
- 44 Oceanic
- 46 City Velvet
- 54 Imatex
- 56 Sunbrella

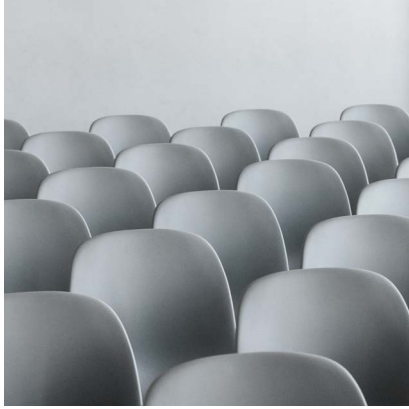


Leathers 58

- 60 Ultra
- 64 Spectrum
- 66 Optimo

Wood 68

Metal 74



Polypropylene
80



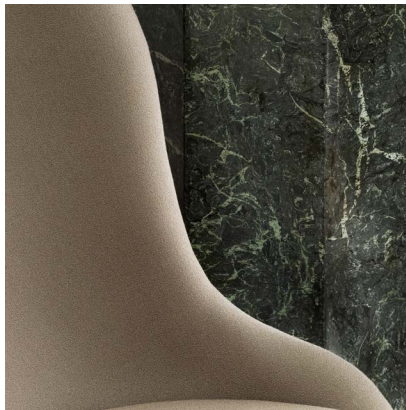
Stone
88



Linoleum
90



Laminate
92



Care instructions
94



Swell sofa in Camira Synergy/Loop

A tool for choosing

When high-quality materials and beautiful colors come together in perfect synergy.

Just as we have creative visions, we are sure that you do too, which is why many of our furniture models can be customized from a vast number of color and material combinations. Options call for decisions, but what to think about when choosing materials?

For us, the right choice is a synergy between look, feel and attributes corresponding to your needs. Maintenance and durability are important factors to consider when selecting finishes, and different contexts place different requirements on the choice of materials. Our material portfolio is created in close collaboration with some of the world's leading suppliers of materials, who continue to raise the bar with their high standards for performance, sustainability and aesthetics.

Aesthetics are more than what meets the eye. Imagine, for example, the warm and soft feel of oak wood against the palm of your hand, or the tickling sensation as you stroke through the raised weave of a bouclé fabric. We believe tactility

is key in creating comfortable and inspiring environments, and we love to play with textures and finishes to evoke the senses. This belief reflects itself in our versatile assortment of qualities.

Ever since we started our journey, color has been an essential instrument in the toolbox we draw on to create our universes. Colors are truly amazing. They can be fun, calming or energizing, they can be strategic and seducing. They possess the power to set the mood and transform objects and spaces. Ranging from soothing neutrals to eye-popping brights, our color card offers a wealth of possibilities for personal expression.

Selecting and combining colors and materials can be an overwhelming task, which is where this tool comes in handy. The following pages will guide you through our wide range of materials to provide you with overview and inspiration for making the right choice for your project.



Studio armchair full upholstery
Synergy/Apt

Striking reds

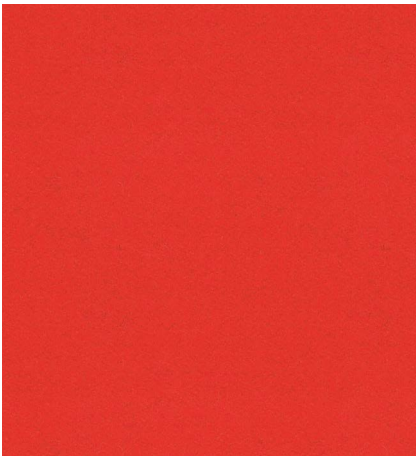
statement

sophisticated

bold



Red
Powdercoated steel, p. 73



Synergy – Apt
Fabric, p. 29



Salsa
Linoleum, p. 85



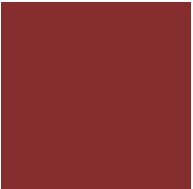
Aquarius – Jezebel
Fabric, p. 39



Synergy – Global
Fabric, p. 29



Zap – OMG
Fabric, p. 31



Red
Polypropylene, p. 78

Blue waves

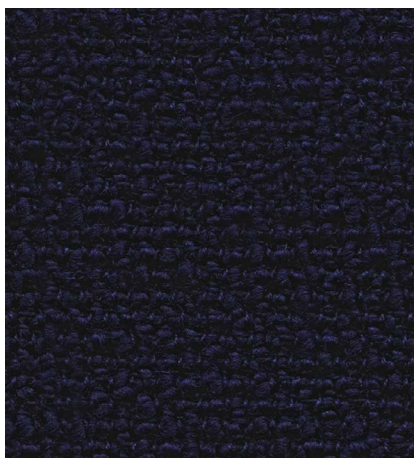
deep

fresh

powerful



Aquarius – Porcelain
Fabric, p. 39



Yoredale – Fossdale
Fabric, p. 35



Blue
Powdercoated steel, p. 72



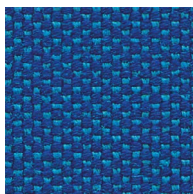
City Velvet – CA7832/053
Fabric, p. 46



Yoredale – Dacre
Fabric, p. 36



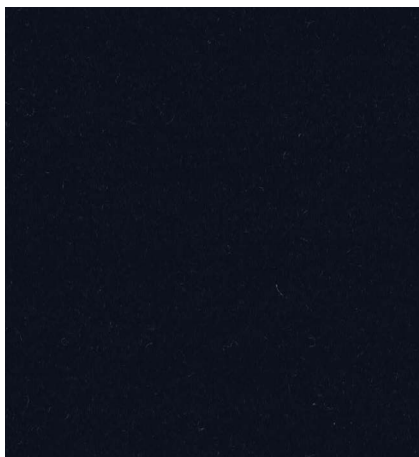
City Velvet – CA7832/050
Fabric, p. 46



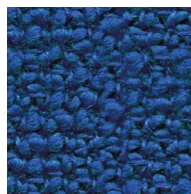
Zap – Zoom
Fabric, p. 32



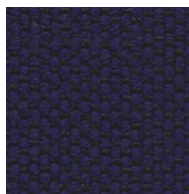
Aquarius – Smurf
Fabric, p. 39



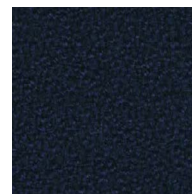
Synergy – Sync
Fabric, p. 27



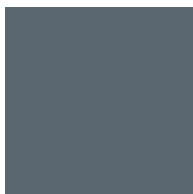
Yoredale – Litton
Fabric, p. 35



Zap – Whomp
Fabric, p. 32



Aquarius – Vico
Fabric, p. 40



Blue
Polypropylene, p. 77



City Velvet – CA7832/052
Fabric, p. 46

Hyg chair in Camira Aquarius / Smurf with black plated steel legs



Era lounge chair low in Sørens Ultra leather/Brandy with black lacquered steel legs

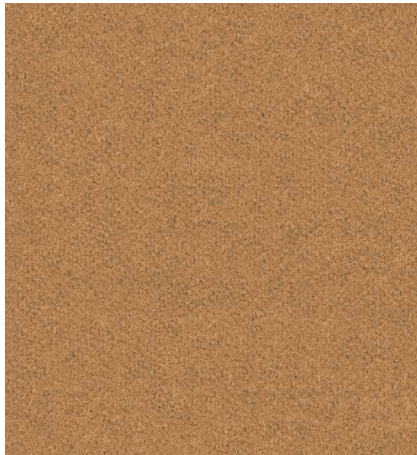


Earthy notes

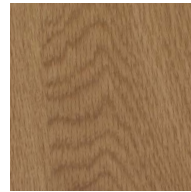
classic

inviting

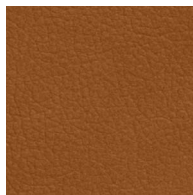
exclusive



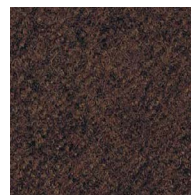
Synergy - Loop
Fabric, p. 25



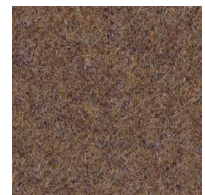
Oak
Wood, p. 65



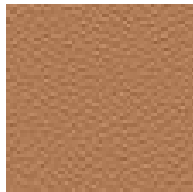
Ultra - Brandy
Leather, p. 57



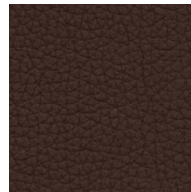
Synergy - Collective
Fabric, p. 26



Synergy - Linea
Fabric, p. 26



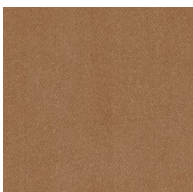
Optimo - Nougat
Leather, p. 63



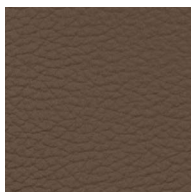
Ultra - Chocolate
Leather, p. 57



Yoredale - Carperby
Fabric, p. 35



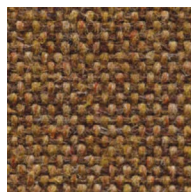
City Velvet - CA7832/025
Fabric, p. 45



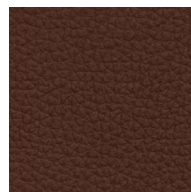
Ultra - Earth
Leather, p. 57



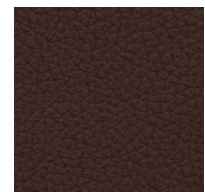
Main Line Flax - Bank
Fabric, p. 21



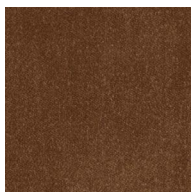
Main Line Flax - Stockwell
Fabric, p. 19



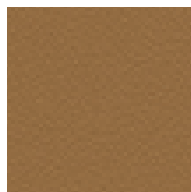
Ultra - Cognac
Leather, p. 59



Ultra - Brown
Leather, p. 57



City Velvet - CA7832/020
Fabric, p. 45



Ultra - Camel
Leather, p. 57



Main Line Flax - Mordon
Fabric, p. 19

Soft neutrals

calm

warm

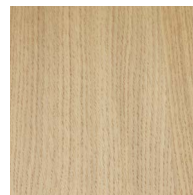
natural



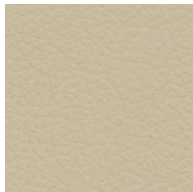
Synergy – Tag
Fabric, p. 25



Synergy – Chain
Fabric, p. 25



Ash
Wood, p. 65



Ultra – Marble
Leather, p. 57



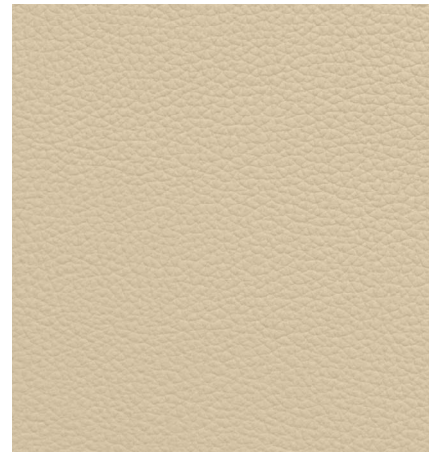
Main Line Flax – Archway
Fabric, p. 19



City Velvet – CA7832/074
Fabric, p. 47



Aquarius – Mushroom
Fabric, p. 39



Ultra – Sand
Leather, p. 57



Main Line Flax – Upminster
Fabric, p. 19



Aquarius – Ceres
Fabric, p. 39



Synergy – Affix
Fabric, p. 25



Zap – Wham
Fabric, p. 32



Optimo – White
Leather, p. 63



Sand
Polypropylene, p. 80



Ace footstool in Camira Synergy/Chain with brass plated steel legs



Ace barstool in Camira Synergy/Partner with black plated steel legs

Cool grays

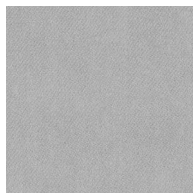
modern

sharp

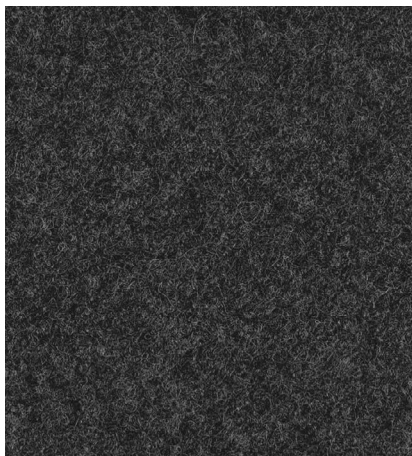
clean



Main Line Flax - Temple
Fabric, p. 19



City Velvet - CA7832/092
Fabric, p. 49



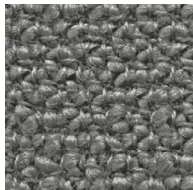
Synergy - Mix
Fabric, p. 25



Yoredale - Leyburn
Fabric, p. 36



City Velvet - CA7832/093
Fabric, p. 49



Yoredale - Hardraw
Fabric, p. 35



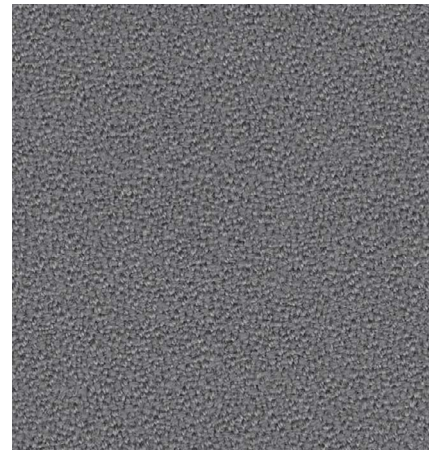
Synergy - Compound
Fabric, p. 25



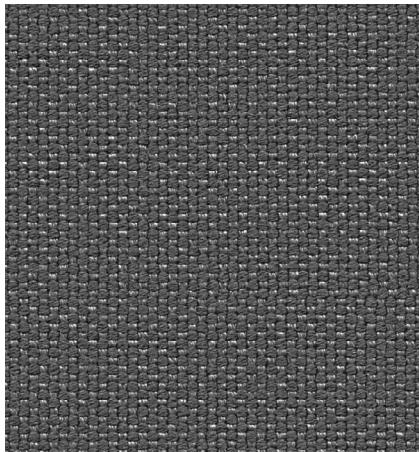
Synergy - Bond
Fabric, p. 25



Aquarius - Heron
Fabric, p. 39



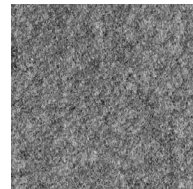
Aquarius - Rhino
Fabric, p. 39



Zap - Puff
Fabric, p. 32



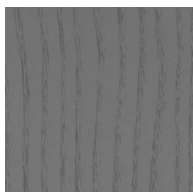
Zap - Splat
Fabric, p. 31



Synergy - Partner
Fabric, p. 25



Grey
Polypropylene, p. 90



Gray
Wood, p. 67



Gray
Polypropylene, p. 78



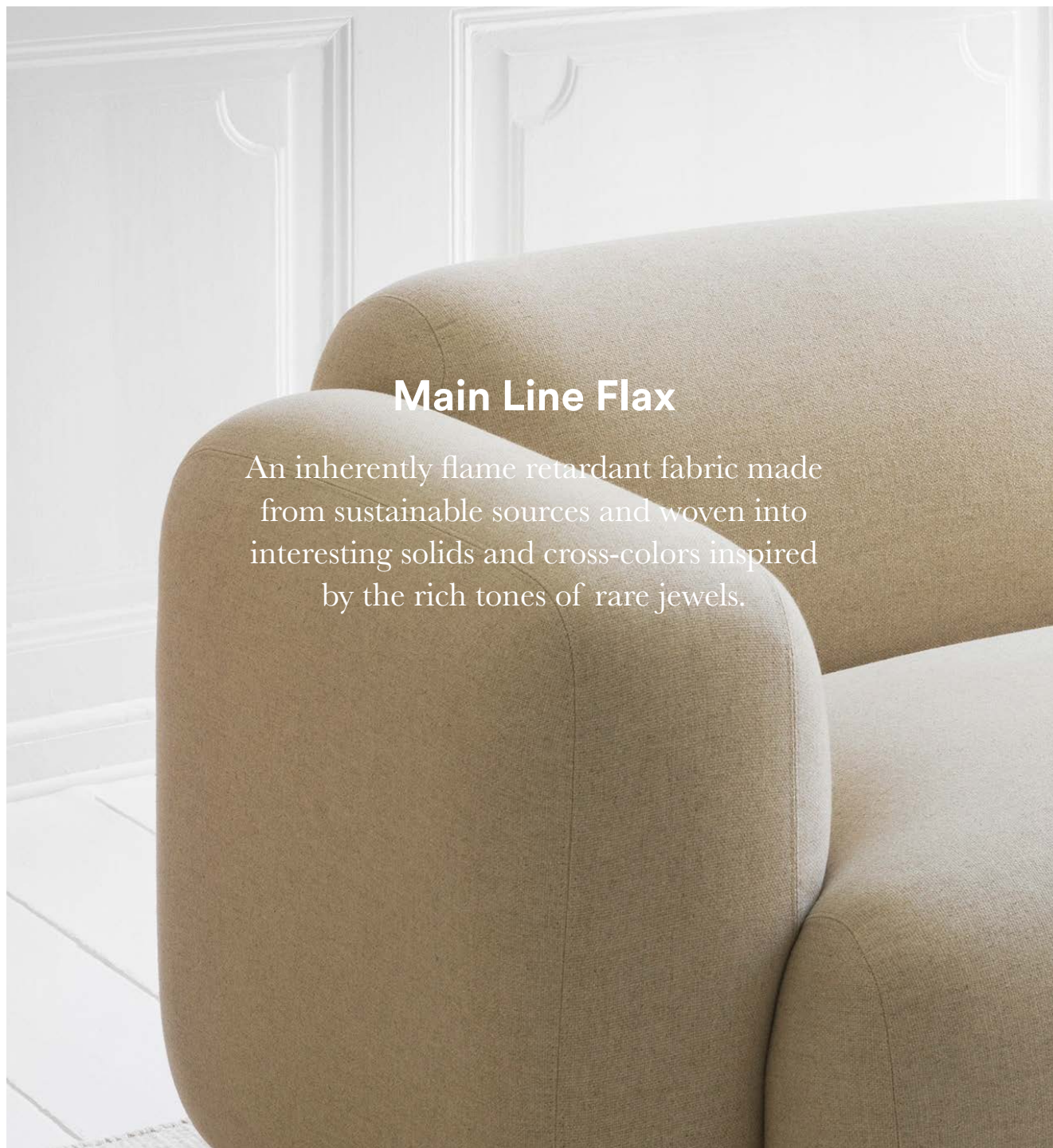
Ultra - Lava
Leather, p. xx



Textiles

We have carefully curated our selection of textiles from some of the best suppliers on the market who operate to the highest environmental standards.

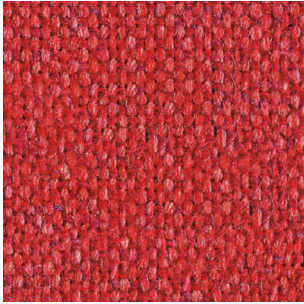




Main Line Flax

An inherently flame retardant fabric made from sustainable sources and woven into interesting solids and cross-colors inspired by the rich tones of rare jewels.

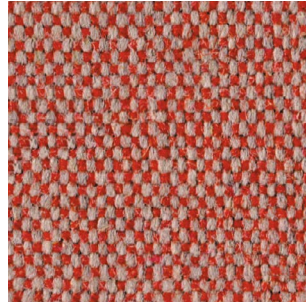
Manufacturer	Camira	Fastness to rubbing	Wet: 3, Dry: 4 (ISO 105 - X12)
Composition	70% virgin wool, 30% flax	Light Fastness	5 (ISO 105 - B02)
Environment	Certified to the EU Ecolabel Certified to Indoor Advantage™ "Gold" Rapidly renewable and compostable Made from wool and bast fiber	Flammability	EN 1021-1&2 Cigarette & Match BS 7176 Low Hazard BS 5852 Ignition Source 5 BS 7176 Medium Hazard NF D 60-013 ÖNORM B 3825 & A 3800-1 (58kg/m ³ CMHR Foam) UNI 9175 Classe 1IM BS 5867-2: Type B Curtains & Drapes
Martindale	Heavy duty / 10 year guarantee. Independently certified to ≥50.000 Martindale cycles		
Weight	437 g/m ² ±5%		



Aldgate
MLF01



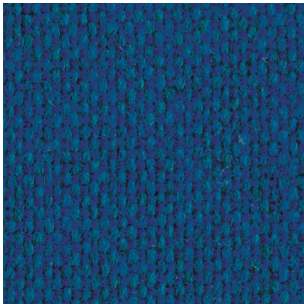
Archway
MLF02



Barbican
MLF03



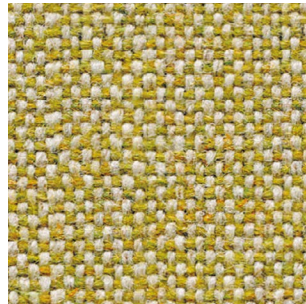
Euston
MLF04



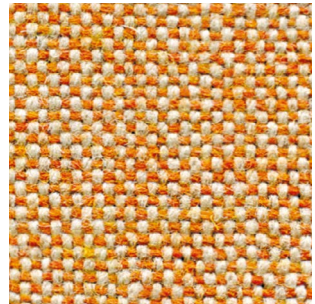
Holborn
MLF05



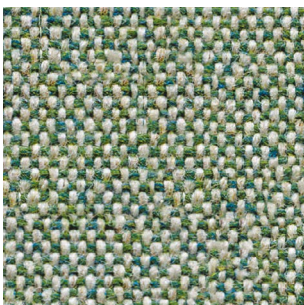
Kilburn
MLF06



Kensington
MLF07



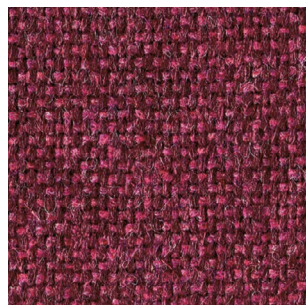
Lambeth
MLF08



Monument
MLF09



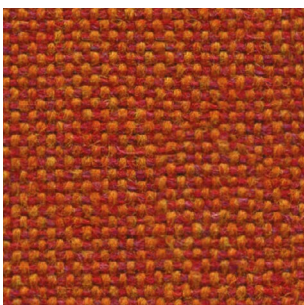
Newbury
MLF10



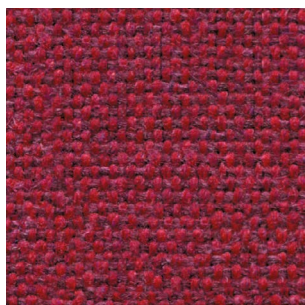
Wembley
MLF11



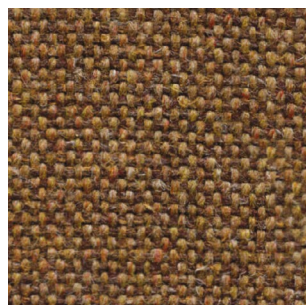
Morden
MLF12



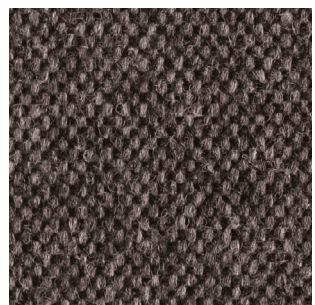
Leyton
MLF13



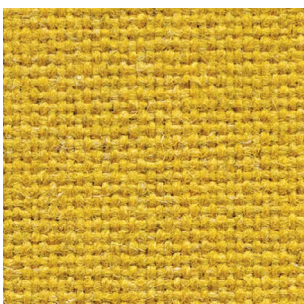
Parsons
MLF14



Stockwell
MLF15



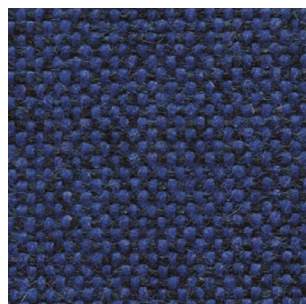
Temple
MLF16



Tooting
MLF17



Tufnell
MLF18



Victoria
MLF19



Upminster
MLF20

Fabrics **Main Line Flax**

Right:

Hyg chair swivel 5W aluminum full upholstery in Camira Main Line Flax/Morden

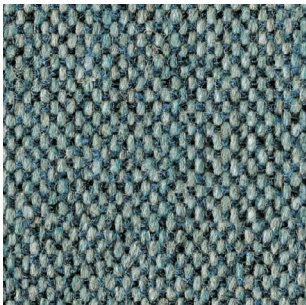
Below:

Swell sofa 2 seater in Camira Main Line Flax/ Upminster





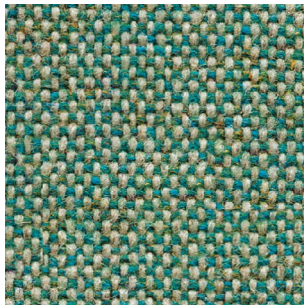
Waterloo
MLF21



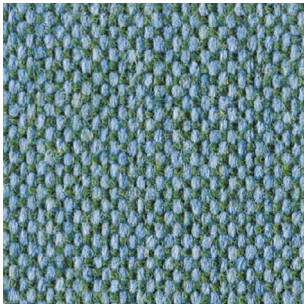
Westminster
MLF22



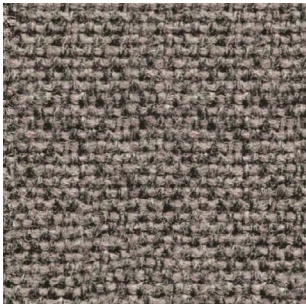
Bank
MLF23



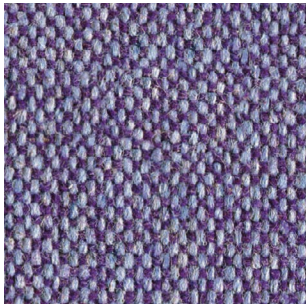
Bayswater
MLF24



Bethnal
MLF25



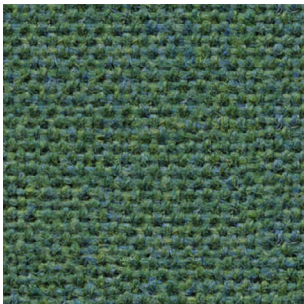
Camden
MLF26



Charing
MLF27



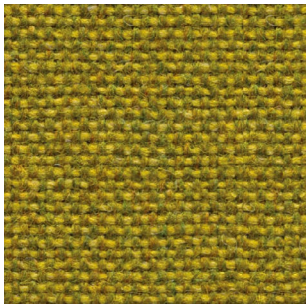
Edgware
MLF28



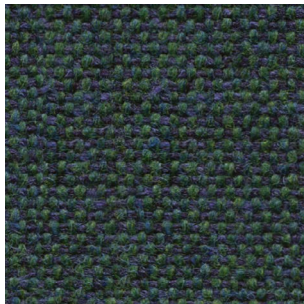
Farringdon
MLF29



Finsbury
MLF30



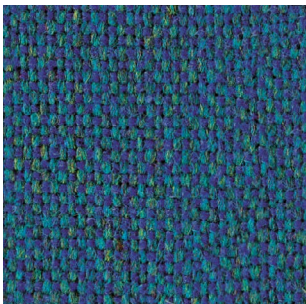
Goldhawk
MLF31



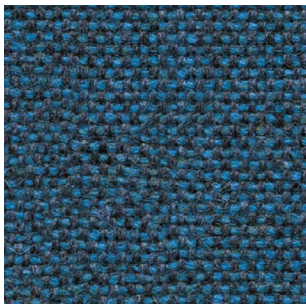
Greenford
MLF32



Highgate
MLF33



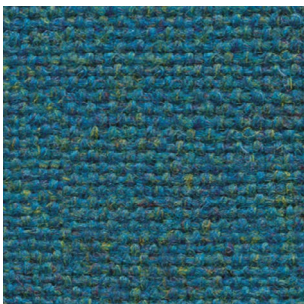
Pimlico
MLF34



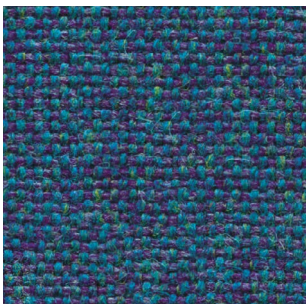
Brompton
MLF35



Tower
MLF36



Stanmore
MLF37



Russell
MLF38

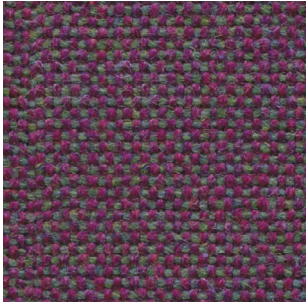


Paddington
MLF39



Northfields
MLF40

Fabrics **Main Line Flax**



Hillingdon
MLF41





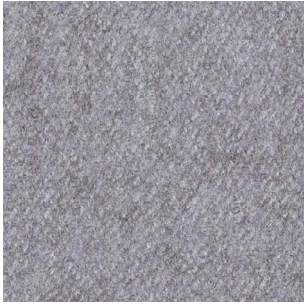
Pad lounge chair high in Camira Main Line Flax/Temple
with oak back shell and black lacquered steel legs
Pad lounge chair low in Camira Main Line Flax/
Upminster with oak shell and grey lacquered steel legs



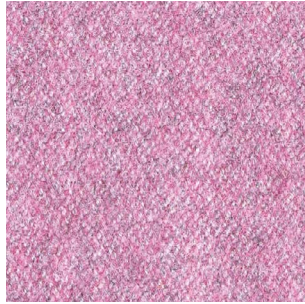
Synergy

A soft handle wool blend fabric featuring exquisite fiber dyed shades and sumptuous piece dyed solids.

Manufacturer	Camira	Fastness to rubbing	Wet: 3, Dry: 4 (ISO 105 - X12)
Composition	95% virgin wool, 5% polyamide	Light Fastness	5 (ISO 105 - B02)
Environment	Certified to the EU Ecolabel Certified to Indoor Advantage™ "Gold"	Flammability	EN 1021 - 1&2 Cigarette & Match BS 7176 Low Hazard NF D 60-013 ÖNORM B 3825 & A 3800-1 (58 kg/m ³ CMHR Foam) UNI 9175 Classe 1 IM EN 13501-1 Adhered Class D, s1, d0 EN 13501-1 Un-adhered Class E, s2, d0 BS 5852 Ignition Source 5 when FR treated BS 7176 Medium Hazard when FR treated EN 13501-1 Adhered Class B, s1, d0 when FR treated EN 13501-1 Un-adhered Class D, s2, d0 when FR treated BS 5867-2: Type B Curtains & Drapes when FR treated
Abrasion resistance	Heavy duty / 10 year guarantee. Independently certified to ≥100.000 Martindale cycles		
Weight	400 g/m ² ±5%		



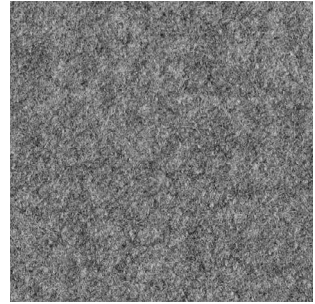
Venture
LDS05



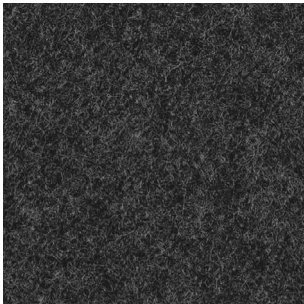
Fate
LDS07



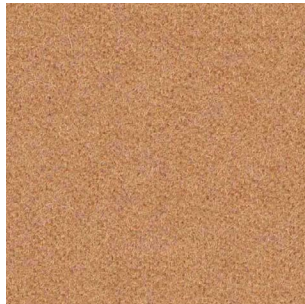
Serendipity
LDS08



Partner
LDS16



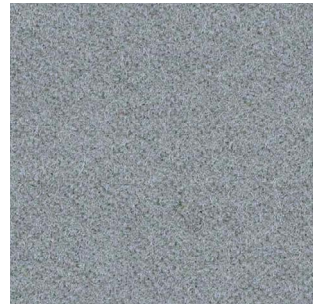
Mix
LDS17



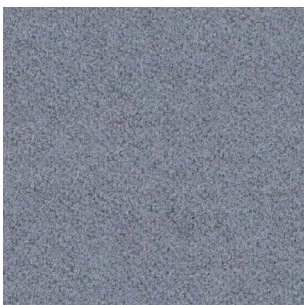
Loop
LDS18



Chain
LDS19



Level
LDS20



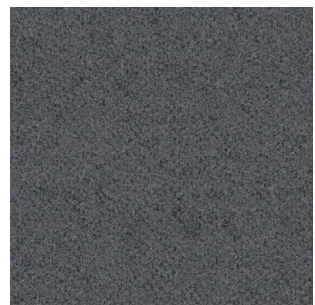
Team
LDS21



Frame
LDS22



Bracket
LDS23



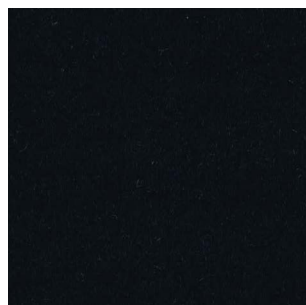
Bond
LDS24



Compound
LDS25



Bridge
LDS26



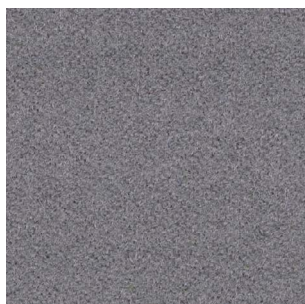
Seek
LDS27



Lateral
LDS28



Hook
LDS29



Pair
LDS31



Affix
LDS32



Tag
LDS33

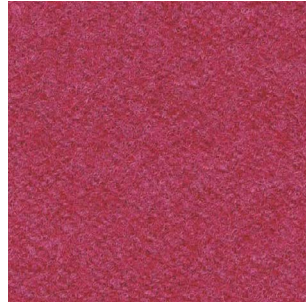
Fabrics **Synergy**



Wed
LDS34



Chemistry
LDS35



Medley
LDS36



Linea
LDS37



Unity
LDS38



Collective
LDS39



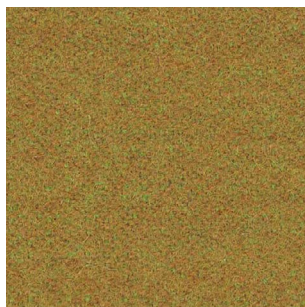
Co-operate
LDS40



Couple
LDS41



Intertwine
LDS42



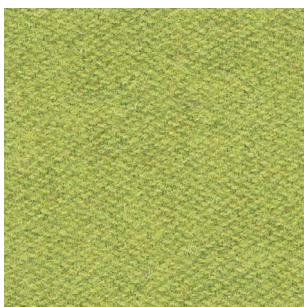
Marry
LDS43



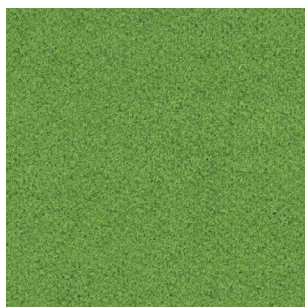
Relate
LDS44



Summon
LDS45



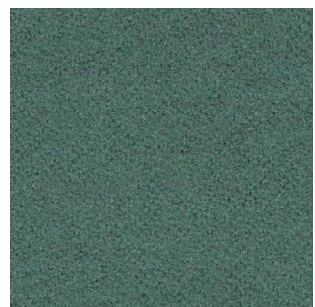
Gather
LDS46



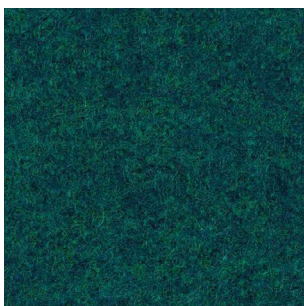
Integrate
LDS47



Interfuse
LDS48



Append
LDS49



League
LDS50



Kindness
LDS51



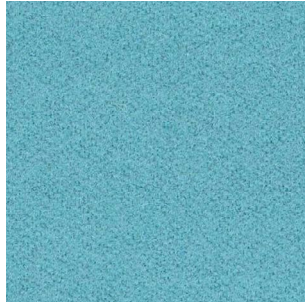
Comply
LDS52



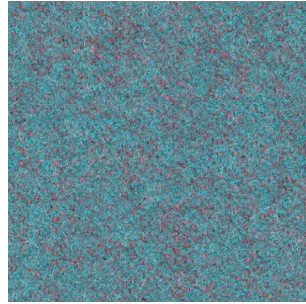
Pact
LDS53



Regard
LDS54



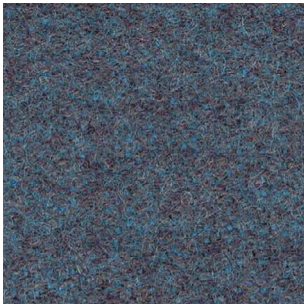
Support
LDS55



Kinship
LDS56



Engage
LDS57



Family
LDS58



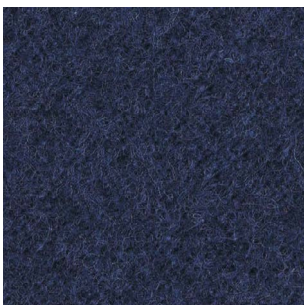
Group
LDS59



Accord
LDS60



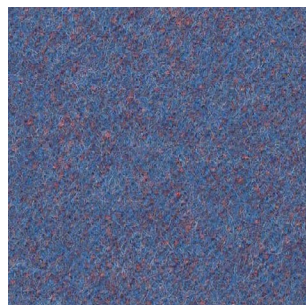
Assemble
LDS61



Alike
LDS62



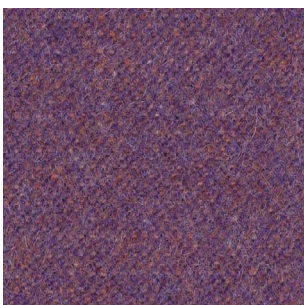
Guild
LDS63



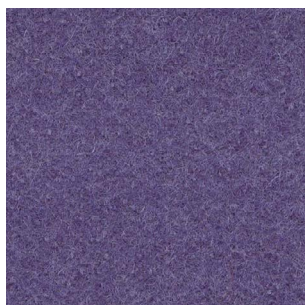
Order
LDS64



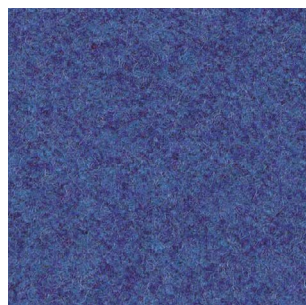
Huddle
LDS65



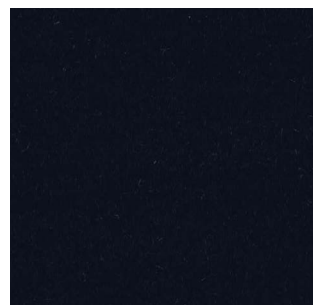
Fellowship
LDS66



Warmth
LDS67



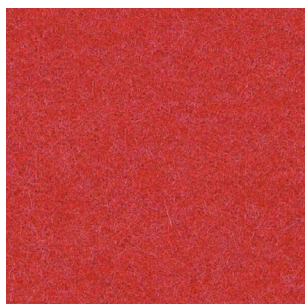
Collaborate
LDS68



Sync
LDS69



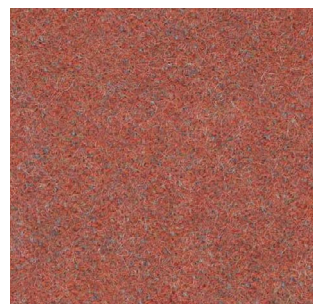
Together
LDS70



Open
LDS71



Compose
LDS72

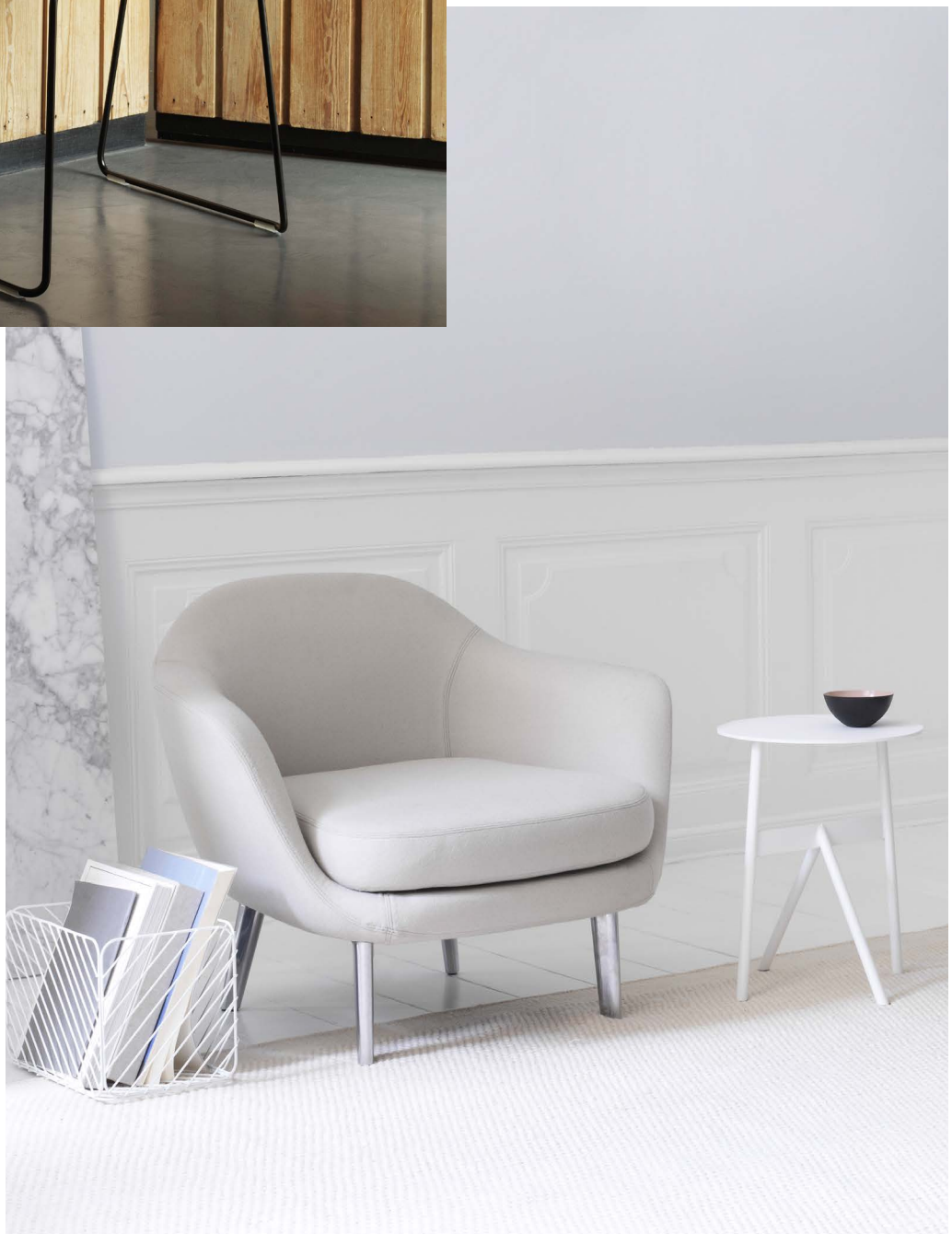


Work
LDS73



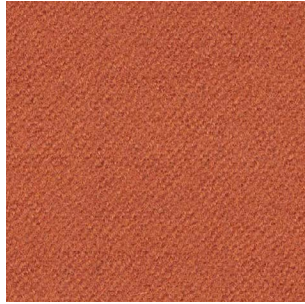
Left:
Just chair in Camira Synergy/Loop with black
lacquered steel legs

Below:
Sum armchair in Camira Synergy/Chain with
aluminium legs

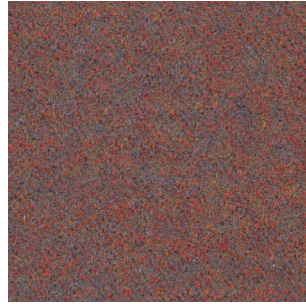




Affinity
LDS74



Contribution
LDS75



Success
LDS76



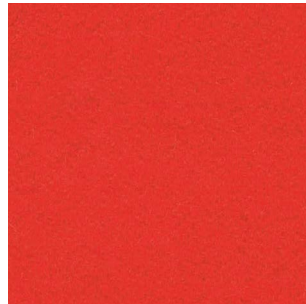
Combo
LDS77



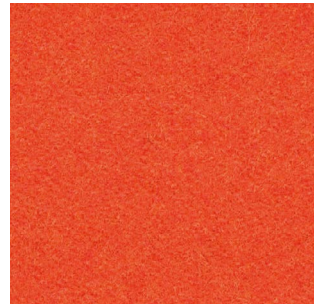
Cordial
LDS78



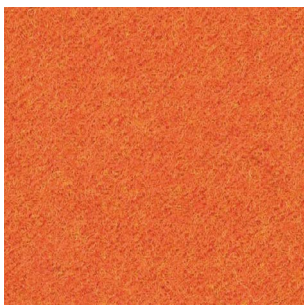
Amiable
LDS79



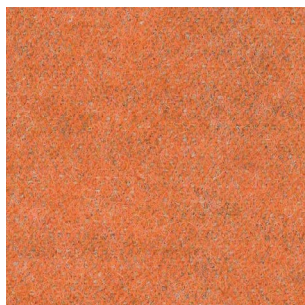
Apt
LDS80



Similar
LDS81



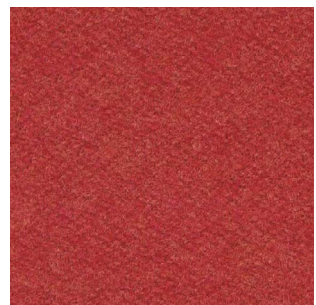
Likeness
LDS82



Congregate
LDS83



Mutual
LDS84



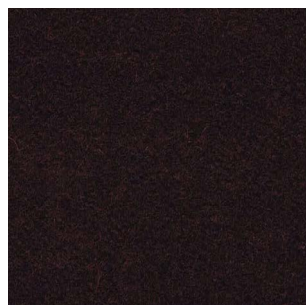
Share
LDS85



Global
LDS86



Values
LDS87



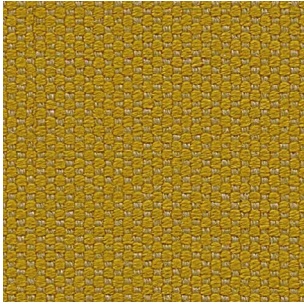
Process
LDS88



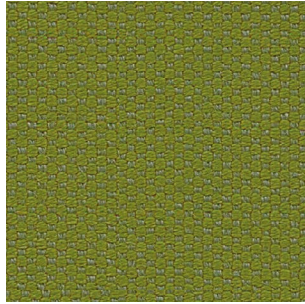
Zap

A real punch thanks to its vibrant, clean, saturated, comic book, jelly bean colors. Zap is incomparable wherever super-wear is desired with color impact, excitement and interest.

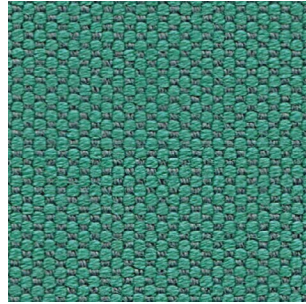
Manufacturer	Camira	Fastness to rubbing	Wet: 4, Dry: 4 (ISO 105 - X12)
Composition	83% virgin wool, 17% polyamide	Light Fastness	Standard: 5 (ISO 105 - B02) ZAP07: 4/5 (ISO 105 - B02) ZAP10: 4/5 (ISO 105 - B02)
Environment	Certified to Indoor Advantage™ "Gold"	Flammability	EN 1021 - 1&2 Cigarette & Match BS 7176 Low Hazard NF D 60-013 BS 5852 Ignition Source 5 when FR Treated BS 7176 Medium Hazard when FR Treated
Abrasion resistance	Heavy duty / 10 year guarantee. Independently certified to ≥100.000 Martindale cycles		
Weight	470 g/m2 ±5%		



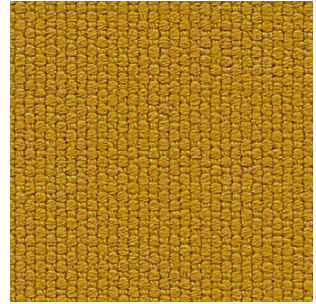
Snap
ZAP01



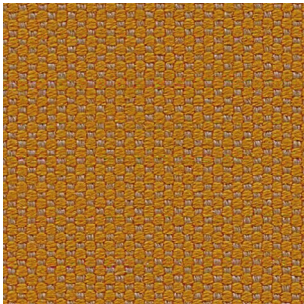
Whoosh
ZAP02



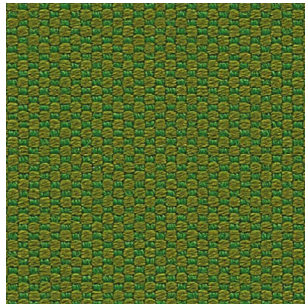
Whirr
ZAP03



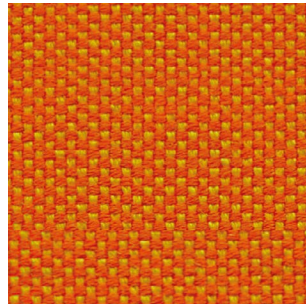
Yeah
ZAP04



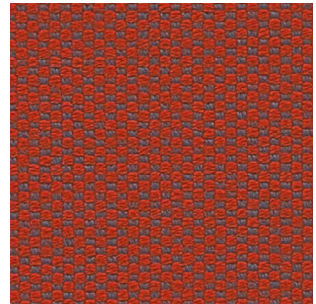
Crackle
ZAP05



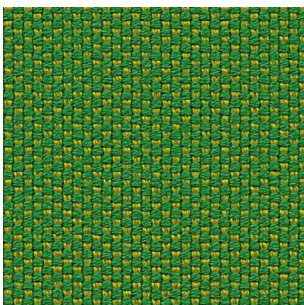
Kapow
ZAP06



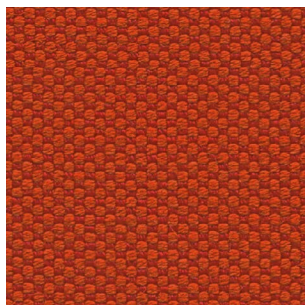
Wowzers
ZAP07



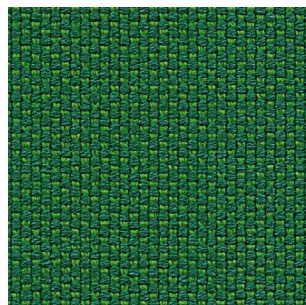
Screech
ZAP08



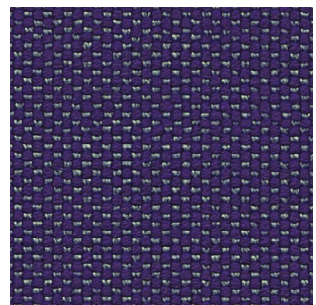
Hahaha
ZAP09



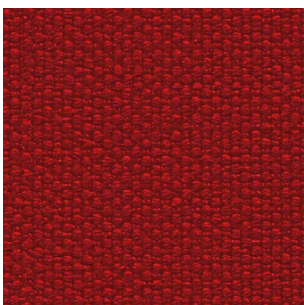
Yikes
ZAP10



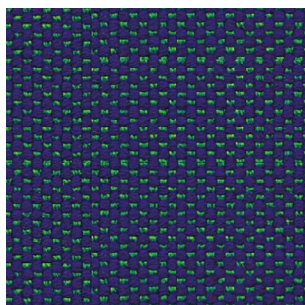
Argh
ZAP11



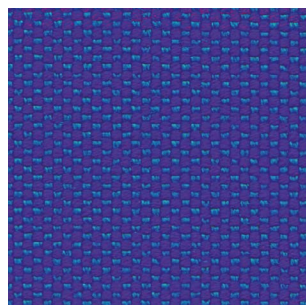
Clobber
ZAP12



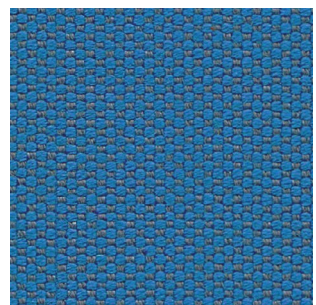
OMG
ZAP13



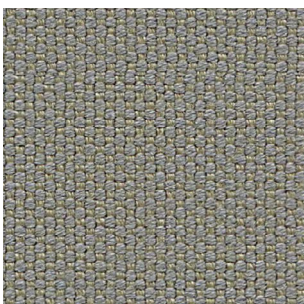
Awesome
ZAP14



Gasp
ZAP15



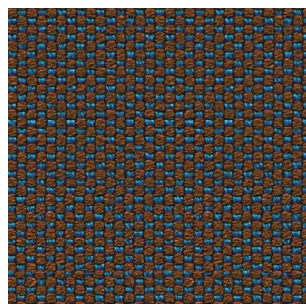
Crash
ZAP16



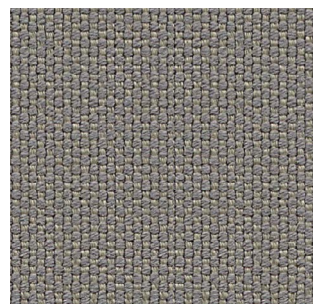
Flump
ZAP17



Power
ZAP18

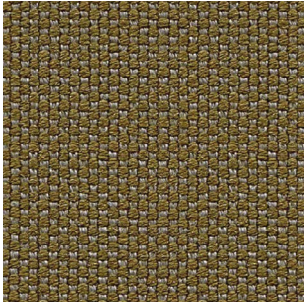


Clang
ZAP19

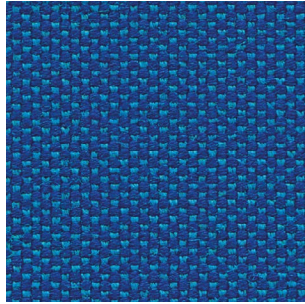


Splat
ZAP20

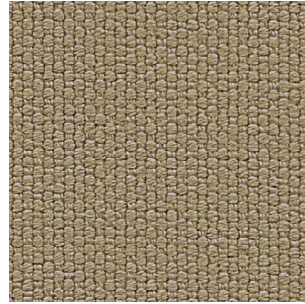
Fabrics **Zap**



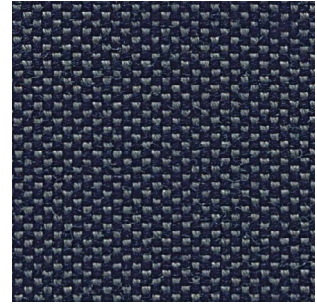
Boing
ZAP21



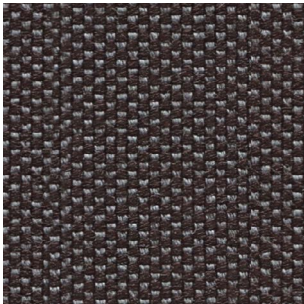
Zoom
ZAP22



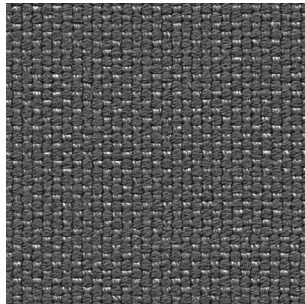
Wham
ZAP23



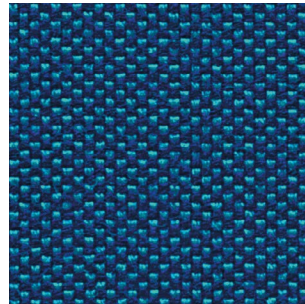
Zoink
ZAP24



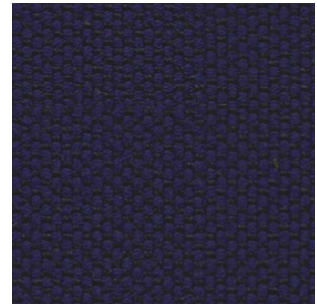
Bonza
ZAP25



Puff
ZAP26



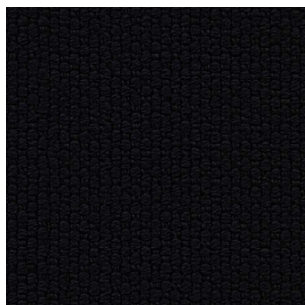
Splash
ZAP27



Whomp
ZAP28



Thud
ZAP29



Cool
ZAP30

Right:
Form armchair in Camira ZAP/OMG

Below:
Swell lounge chair in Camira Zap/Wham





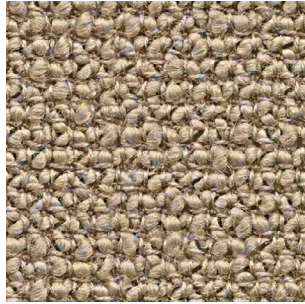
Yoredale

A highly textured textile with undulations reflective of its Yorkshire roots, its fascinating bouclé style yarn features a contrasting black binder that brings depth to its saturated tones.

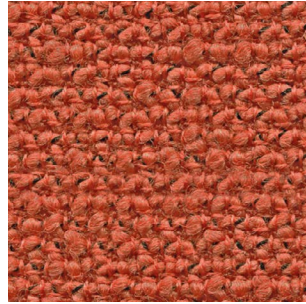
Manufacturer	Camira	Fastness to rubbing	Wet: 4, Dry: 4 (ISO 105 - X12)
Composition	95% wool, 3% polyester, 2% polyamide	Light Fastness	5 (ISO 105 - B02)
Environment	Certified to Indoor Advantage™ "Gold" Nonmetallic dyestuffs	Flammability	EN 1021 - 1&2 Cigarette & Match BS 7176 Low Hazard ÖNORM B 3825 & A 3800-1 (58kg/m ³ CMHR Foam) UNI 9175 Classe 1 IM BS 5852 Ignition Source 5 when FR treated BS 7176 Medium Hazard when FR treated
Abrasion resistance	Heavy duty / 10 year guarantee. Independently certified to ≥50.000 Martindale cycles		
Weight	700 g/m ² ±5%		



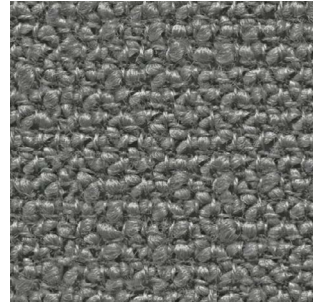
Buckden
UDA01



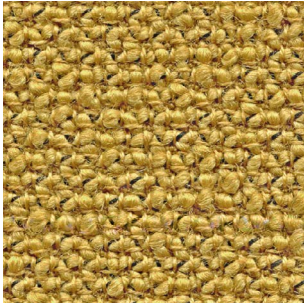
Kidstone
UDA02



Askrigg
UDA03



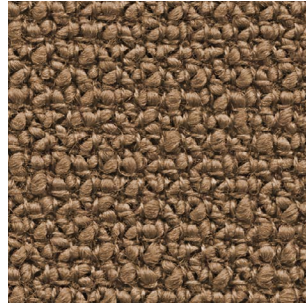
Hardraw
UDA04



Simonstone
UDA05



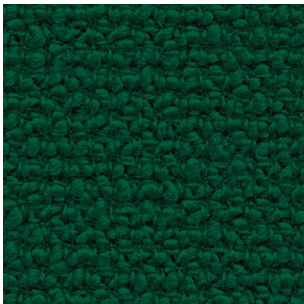
Thoralby
UDA06



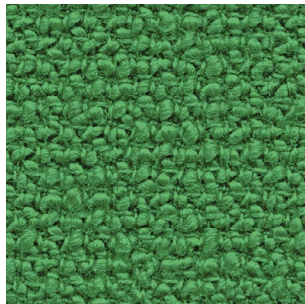
Carperby
UDA07



Gayle
UDA08



Thornton
UDA09



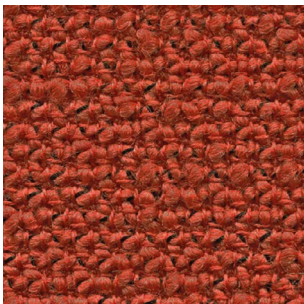
Cray
UDA10



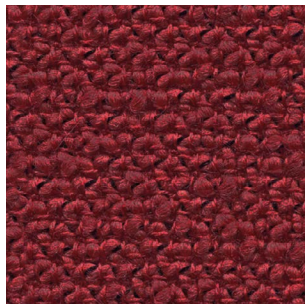
Fossdale
UDA11



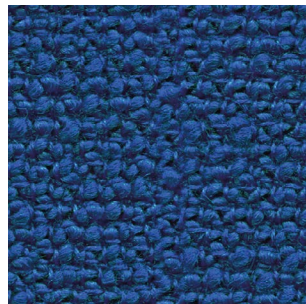
Woodale
UDA12



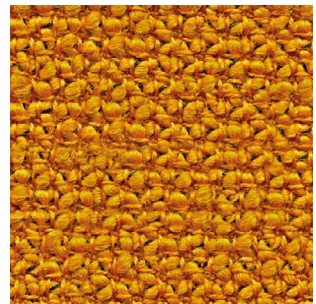
Walden
UDA13



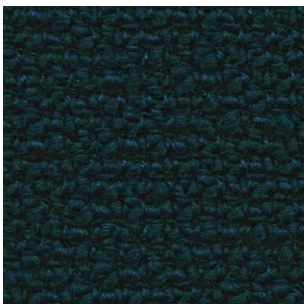
Sedbusk
UDA14



Litton
UDA15



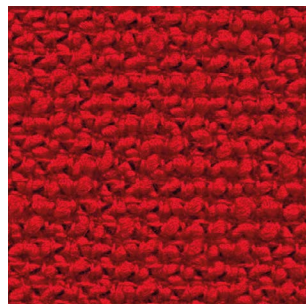
Nidd
UDA16



Ribble
UDA17



Wharfe
UDA18

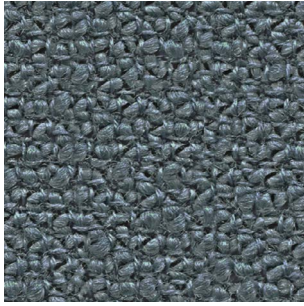


Ripley
UDA19

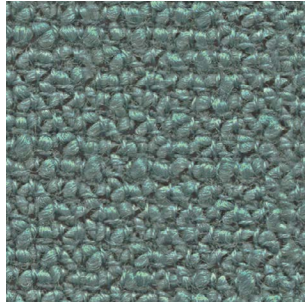


Darley
UDA20

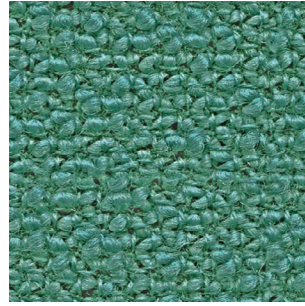
Fabrics **Yoredale**



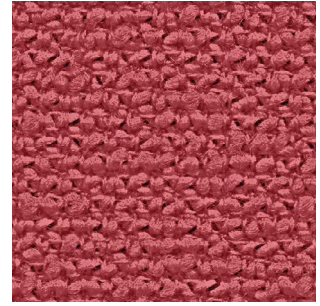
Dacre
UDA21



Burnsall
UDA22



Cracoe
UDA23



Woden
UDA24



Leyburn
UDA25



Left:
Rope sofa in Yoredale/Harddraw

Below:
Hyg lounge chair high swivel in Yoredale/Simonstone

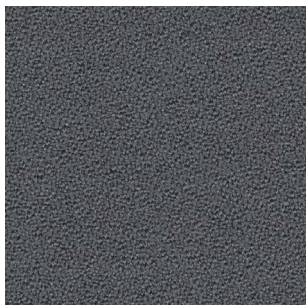




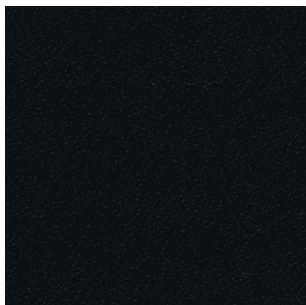
Aquarius

A versatile crêpe weave fabric that is suitable for task chairs and lounge seating. Made from 100% natural wool, which is not only rapidly renewable but also fully biodegradable.

Manufacturer	Camira	Fastness to rubbing	Wet: 4, Dry: 4 (ISO 105 - X12)
Composition	100% virgin wool	Light Fastness	5 (ISO 105 - B02)
Environment	Certified to Indoor Advantage™ "Gold" Rapidly renewable and compostable Nonmetallic dyestuffs	Flammability	EN 1021-1&2 Cigarette & Match BS 7176 Low Hazard UNI 9175 Classe 1 IM BS 5852 Ignition Source 5 when FR treated BS 7176 Medium Hazard when FR treated BS 5867-2 Type B Curtains & Drapes when FR treated
Abrasion resistance	Heavy duty / 10 year guarantee. Independently certified to ≥50.000 Martindale cycles		
Weight	370 g/m ² ±5%		



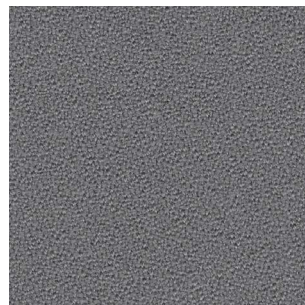
Heron
JA001



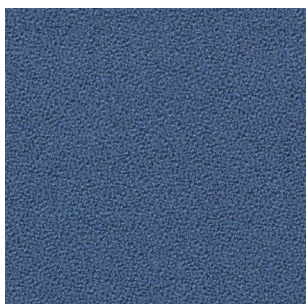
Pitch
JA002



Mariner
JA016



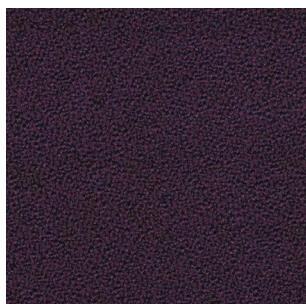
Rhino
JA022



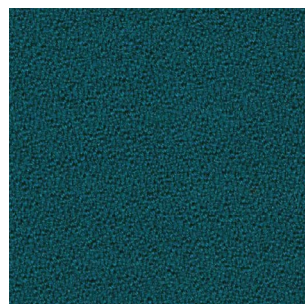
Porcelain
JA024



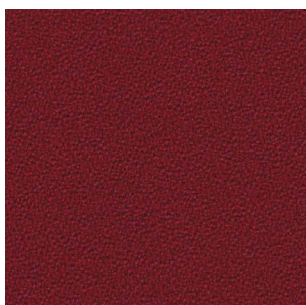
Jezebel
JA027



Paderborn
JA047



Biscay
JA059



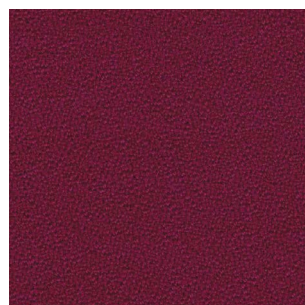
Vermillion
JA062



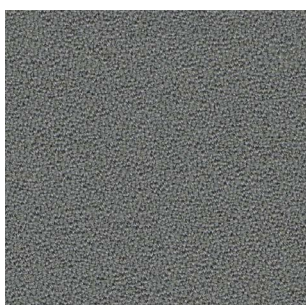
Amber
JA068



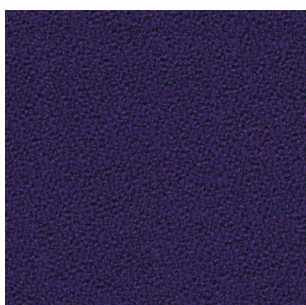
Swart
JA069



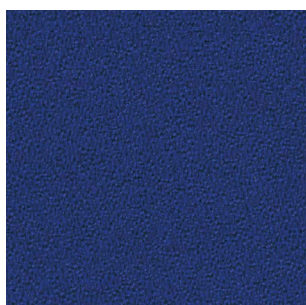
Poison
JA084



Mushroom
JA125



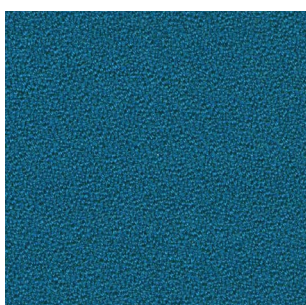
Purple
JA157



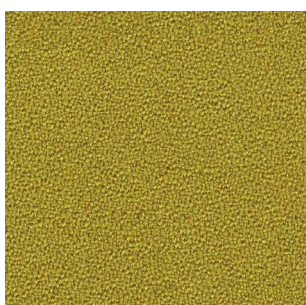
Smurf
JA159



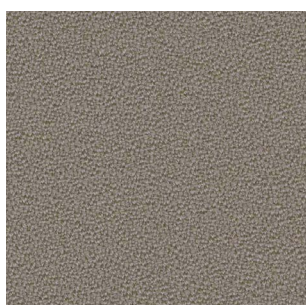
Tambourine
JA183



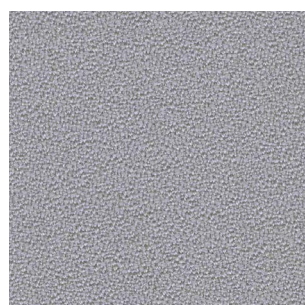
Manta
JA194



Courgette
JA201

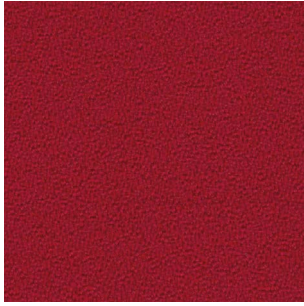


Ceres
JA409

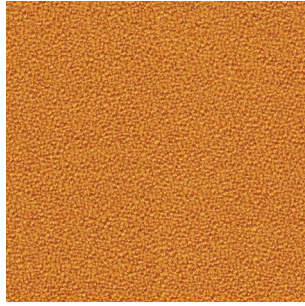


Aristotle
JA416

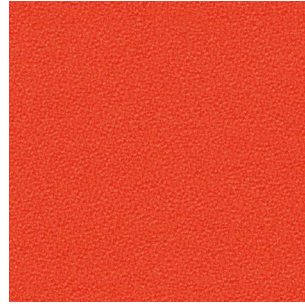
Fabrics **Aquarius**



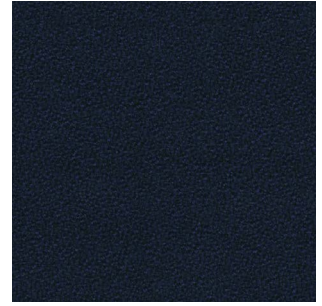
Cherry
JA419



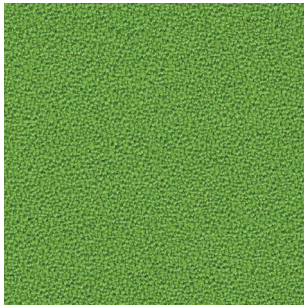
Zippy
JA426



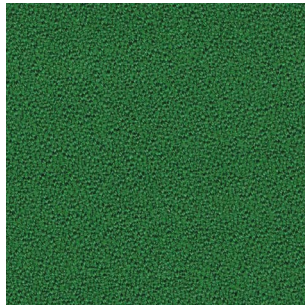
Circus
JA428



Vico
JA435



Tombola
JA442



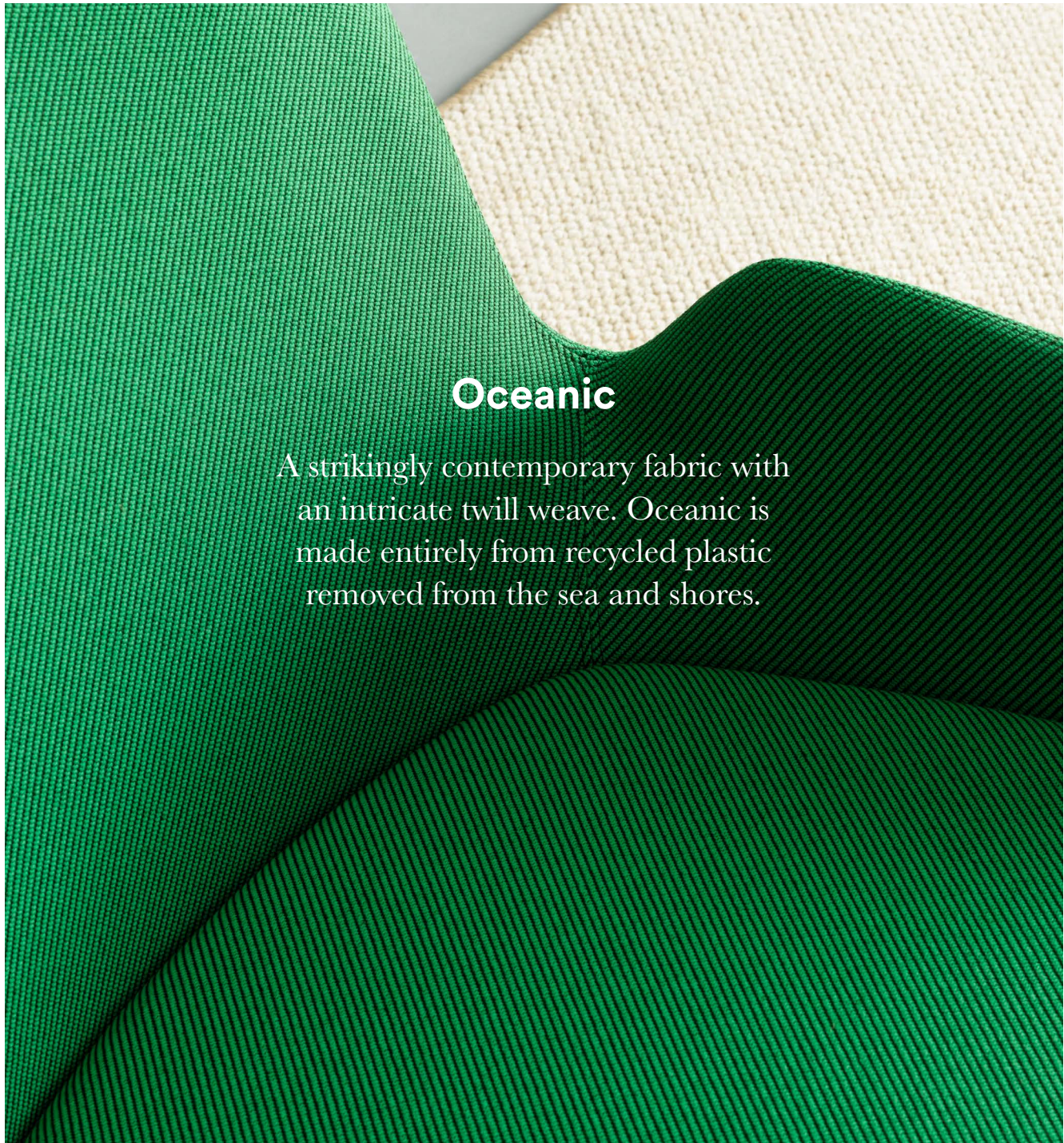
Chomsky
JA443



Spinoza
JA448

Swell sofa in Aquarius/Ceres

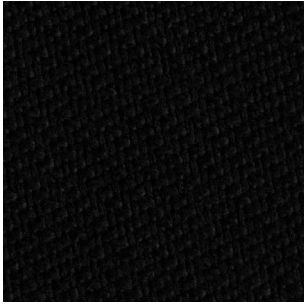




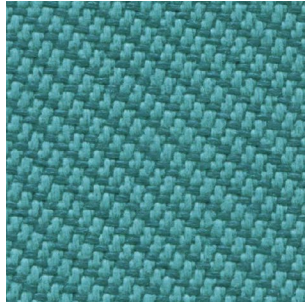
Oceanic

A strikingly contemporary fabric with an intricate twill weave. Oceanic is made entirely from recycled plastic removed from the sea and shores.

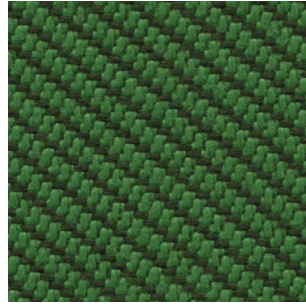
Manufacturer	Camira	Fastness to rubbing	Wet: 4, Dry: 4 (ISO 105 - X12)
Composition	100% post-consumer recycled polyester, including 50% SEAQUAL yarn.	Light Fastness	5 (ISO 105 - B02) OOC16: 4/5 (ISO 105 - B02)
Environment	Certified to OEKO-TEX® Standard 100 Certified to Indoor Advantage™ Gold Made from 100% post-consumer recycled polyester Nonmetallic dyestuffs	Flammability	EN 1021 - 1 (cigarette) EN 1021 - 2 (match) BS 7176 Low Hazard Note: Flammability performance is dependent on components used. Our certificates show what substrates have been used in our tests. For composite tests customers must ensure their complete furniture meets the necessary standards.
Abrasion resistance	Heavy duty / 10 year guarantee Independently certified to ≥100.000 Martindale cycles		
Weight	497g/m2 ±5% (696g/lin.m ±5%)		



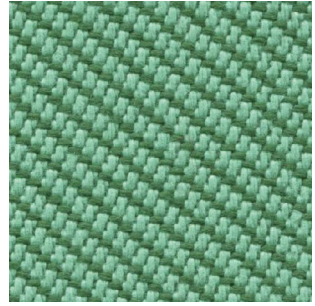
Flotsam
OOC01



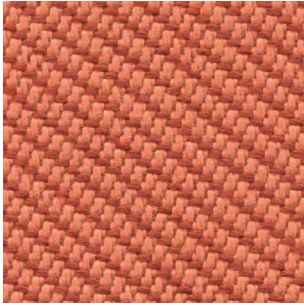
Jetsam
OOC02



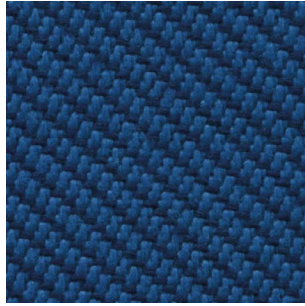
Coast
OOC03



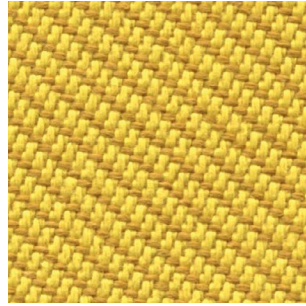
Sea
OOC04



Coral
OOC05



Atoll
OOC06



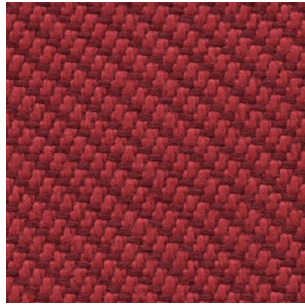
Barrier
OOC07



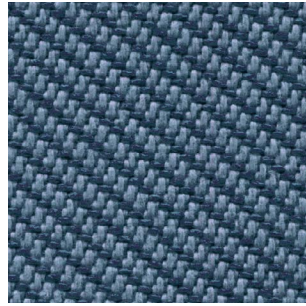
Bay
OOC08



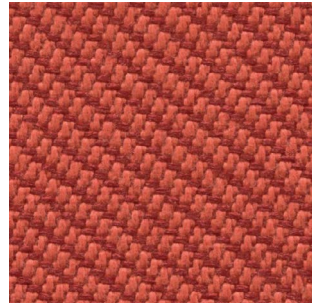
Shore
OOC09



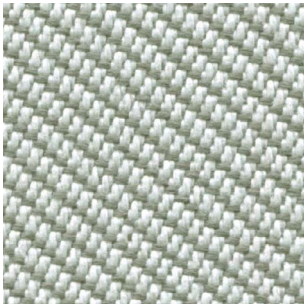
Abyss
OOC10



Neptune
OOC11



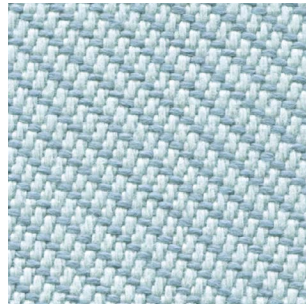
Aquatic
OOC12



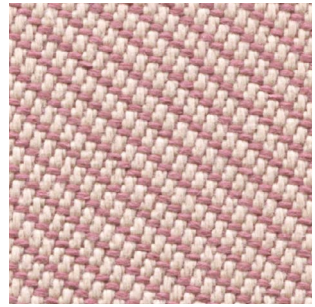
Paddle
OOC13



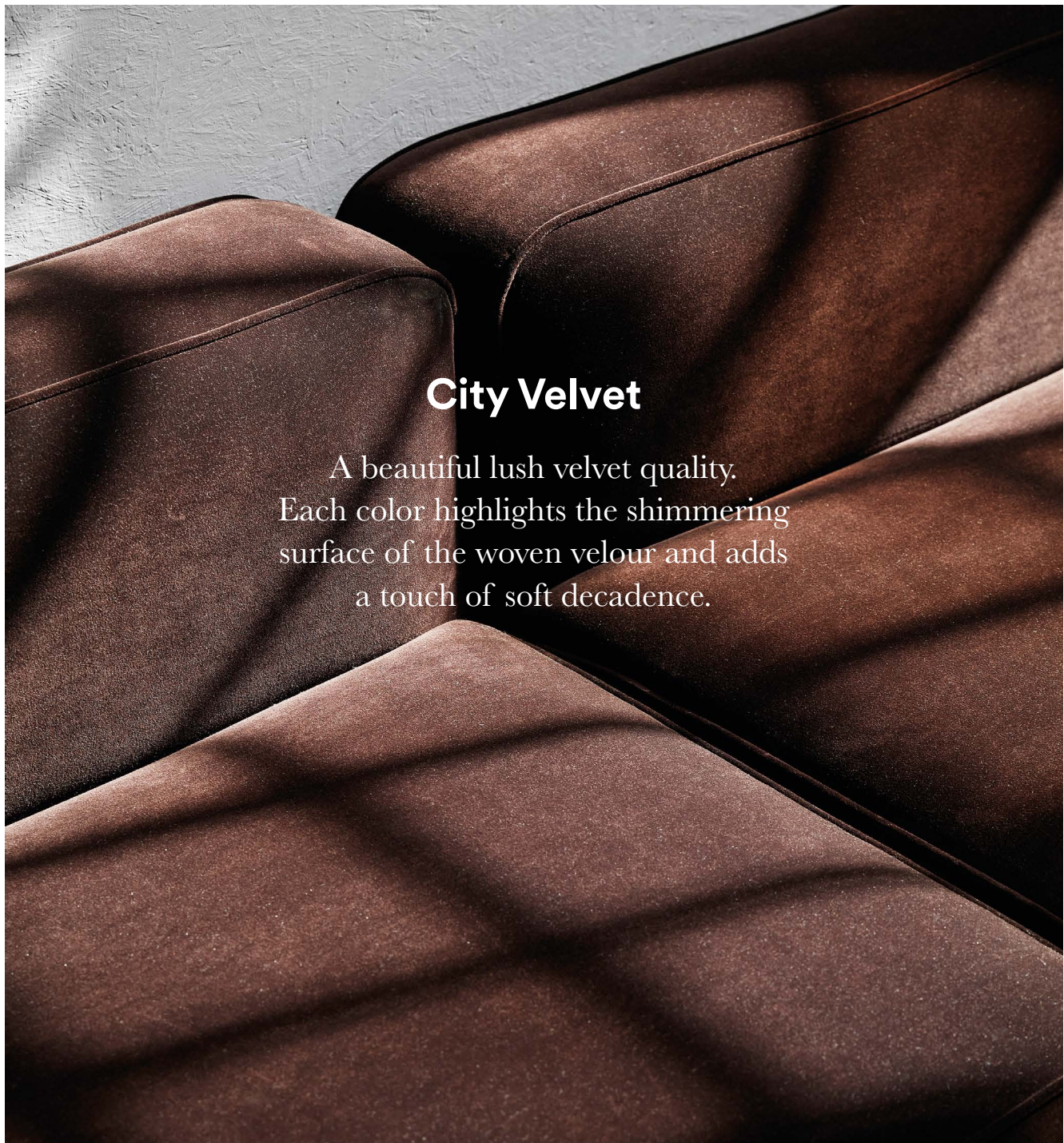
Riptide
OOC14



Gulf
OOC15



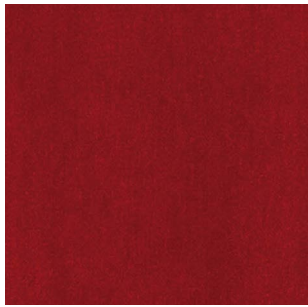
Seafarer
OOC16



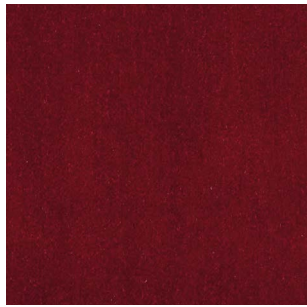
City Velvet

A beautiful lush velvet quality.
Each color highlights the shimmering
surface of the woven velour and adds
a touch of soft decadence.

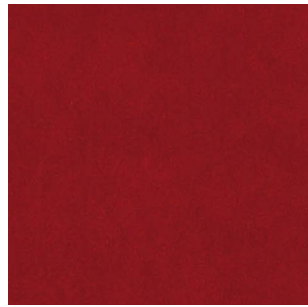
Manufacturer	JAB
Composition	Pile: 100% polyester Groundmaterial: 100% polyester
Abrasion resistance	100.000 Martindale
Weight	440 g/m ²
Light Fastness	3-5



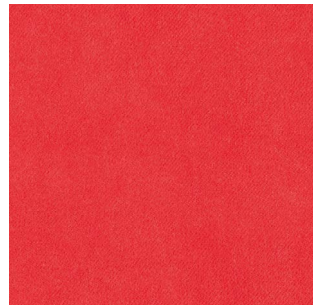
CA7832/010



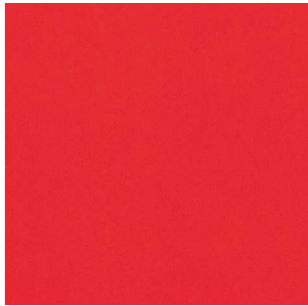
CA7832/011



CA7832/012



CA7832/013



CA7832/014



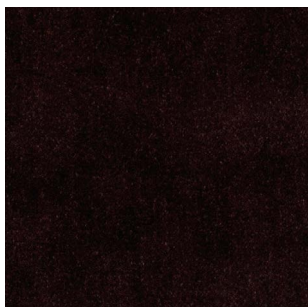
CA7832/015



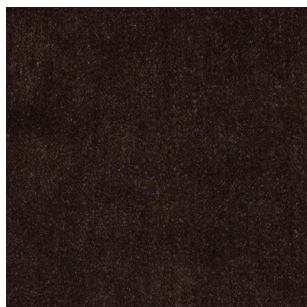
CA7832/020



CA7832/021



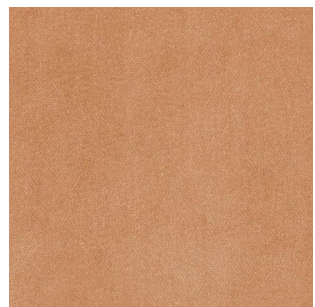
CA7832/022



CA7832/023



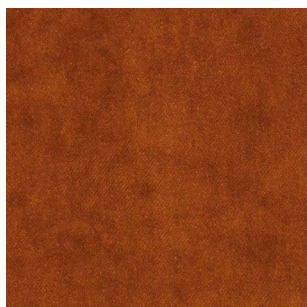
CA7832/024



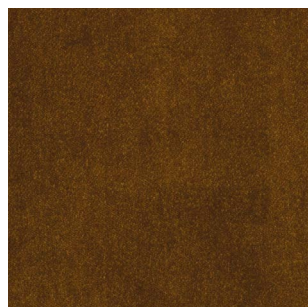
CA7832/025



CA7832/026



CA7832/027



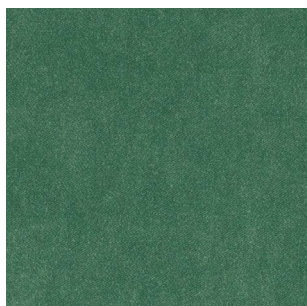
CA7832/030



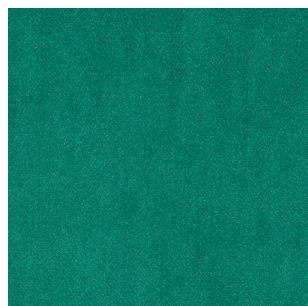
CA7832/031



CA7832/032



CA7832/033

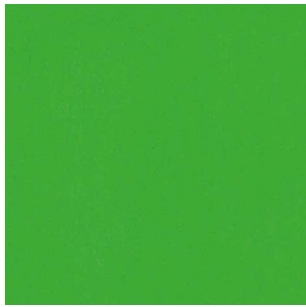


CA7832/034

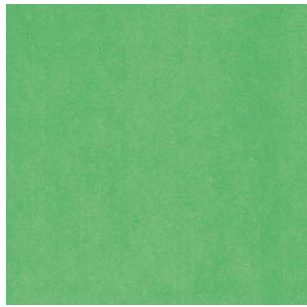


CA7832/035

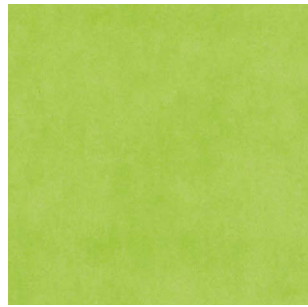
Fabrics **City Velvet**



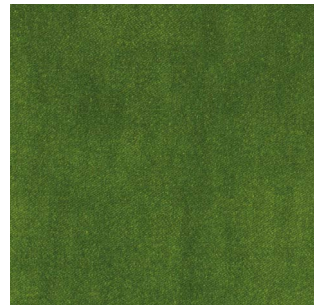
CA7832/036



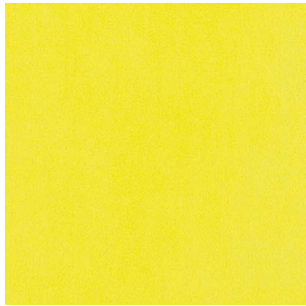
CA7832/037



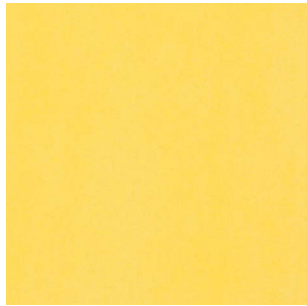
CA7832/038



CA7832/039



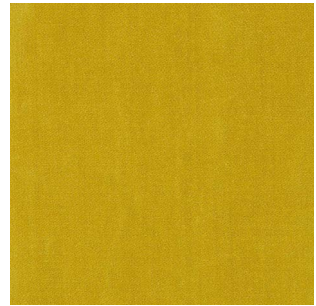
CA7832/040



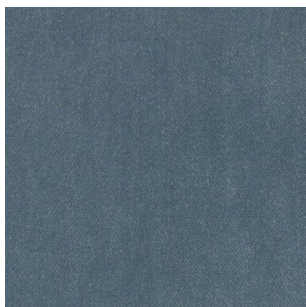
CA7832/041



CA7832/042



CA7832/043



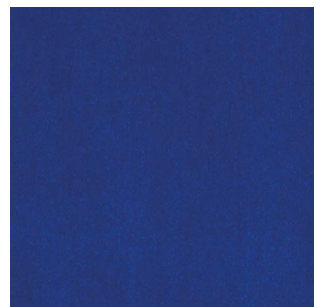
CA7832/050



CA7832/051



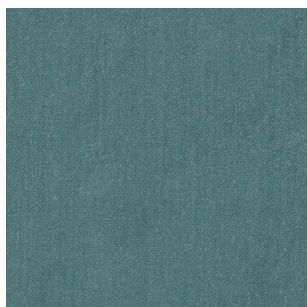
CA7832/052



CA7832/053



CA7832/055



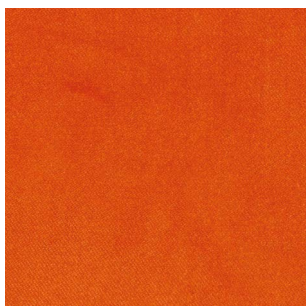
CA7832/056



CA7832/058



CA7832/060



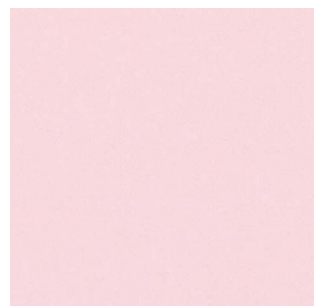
CA7832/061



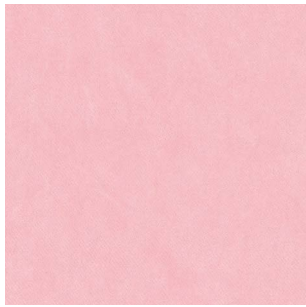
CA7832/062



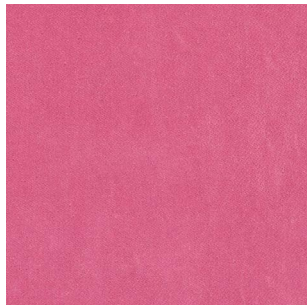
CA7832/063



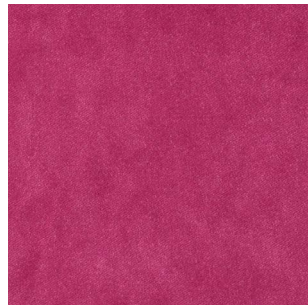
CA7832/064



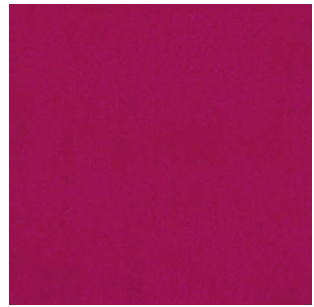
CA7832/065



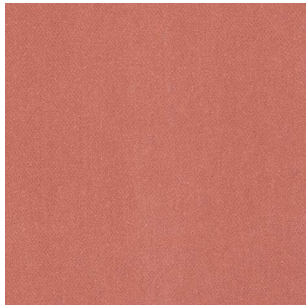
CA7832/066



CA7832/067



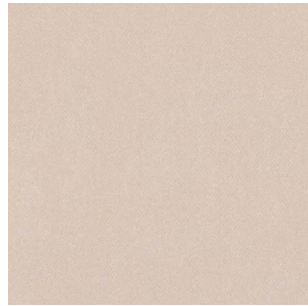
CA7832/068



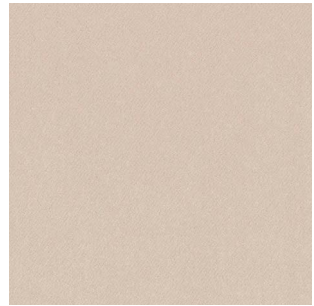
CA7832/069



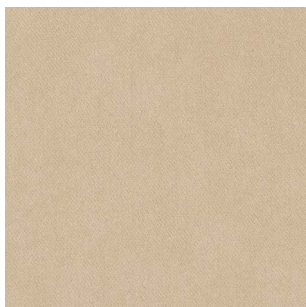
CA7832/070



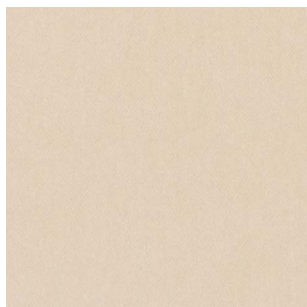
CA7832/071



CA7832/072



CA7832/073



CA7832/074



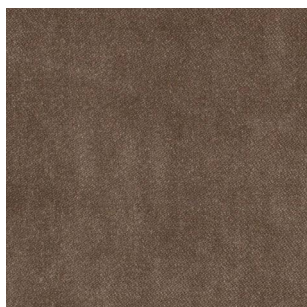
CA7832/075



CA7832/076



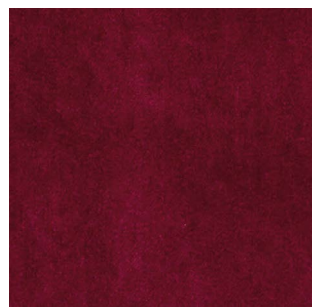
CA7832/077



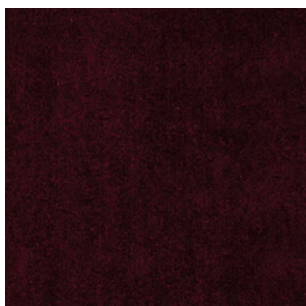
CA7832/078



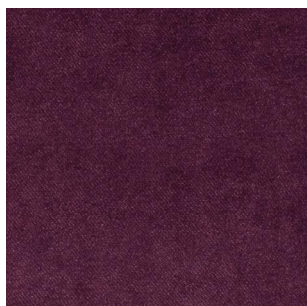
CA7832/079



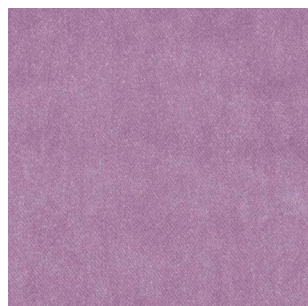
CA7832/080



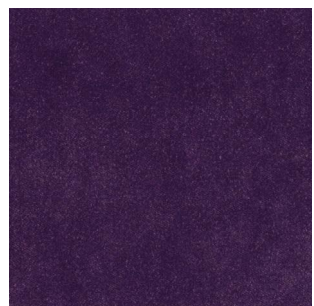
CA7832/081



CA7832/082



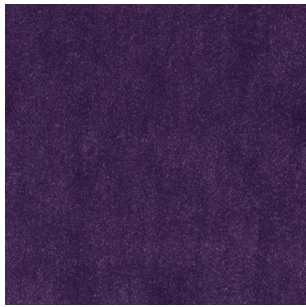
CA7832/083



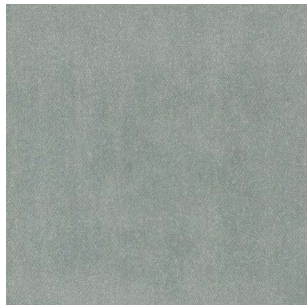
CA7832/084



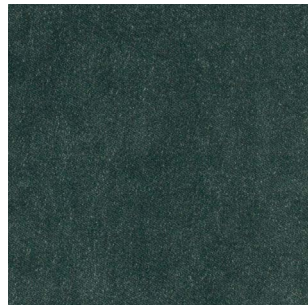
Circus pouf small and large in JAB City Velvet



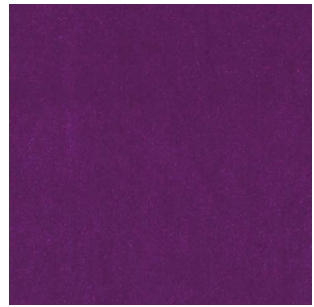
CA7832/085



CA7832/086



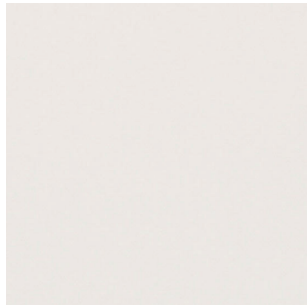
CA7832/087



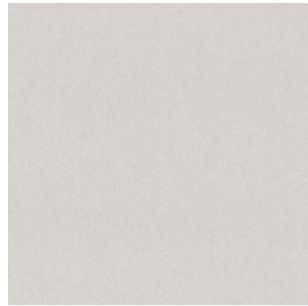
CA7832/088



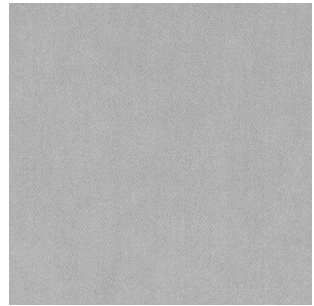
CA7832/089



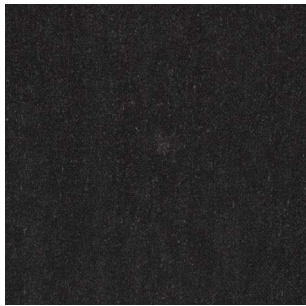
CA7832/090



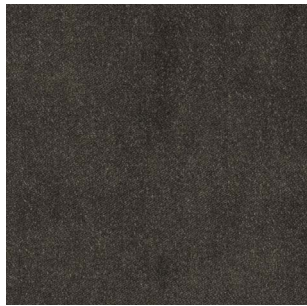
CA7832/091



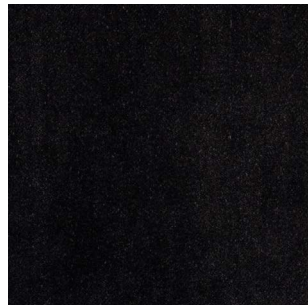
CA7832/092



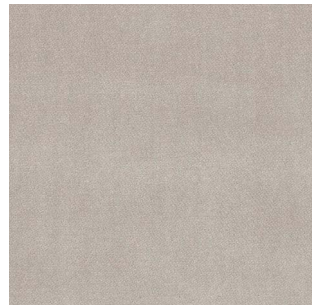
CA7832/093



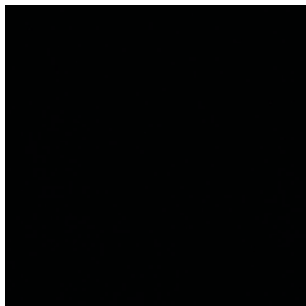
CA7832/094



CA7832/095



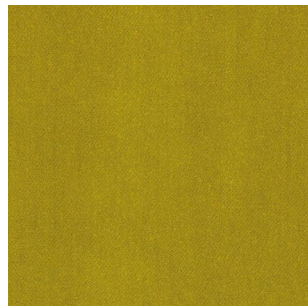
CA7832/096



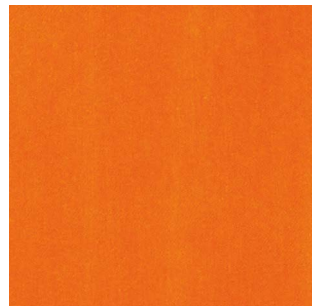
CA7832/099



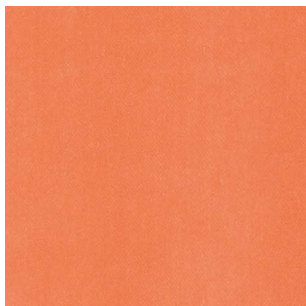
CA7832/126



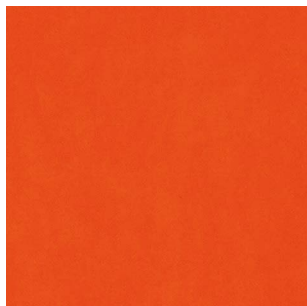
CA7832/130



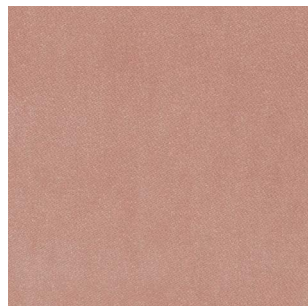
CA7832/160



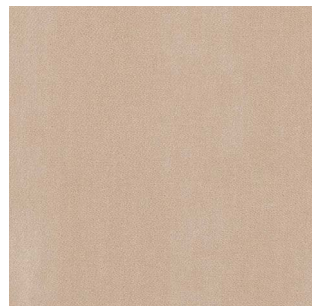
CA7832/161



CA7832/162

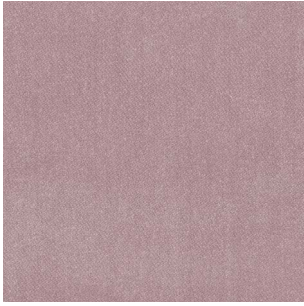


CA7832/165

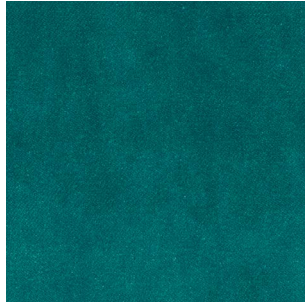


CA7832/170

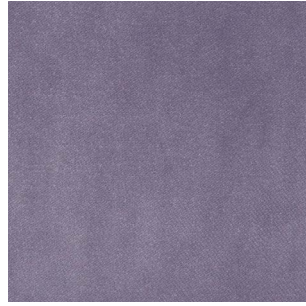
Fabrics **City Velvet**



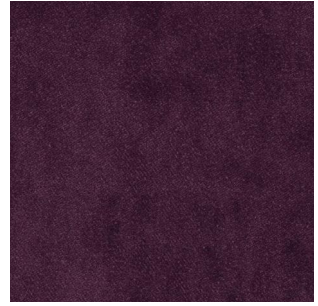
CA7832/180



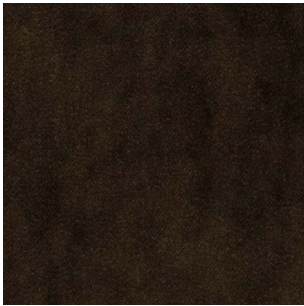
CA7832/181



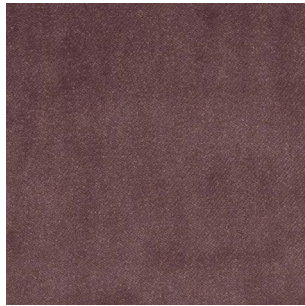
CA7832/184



CA7832/186



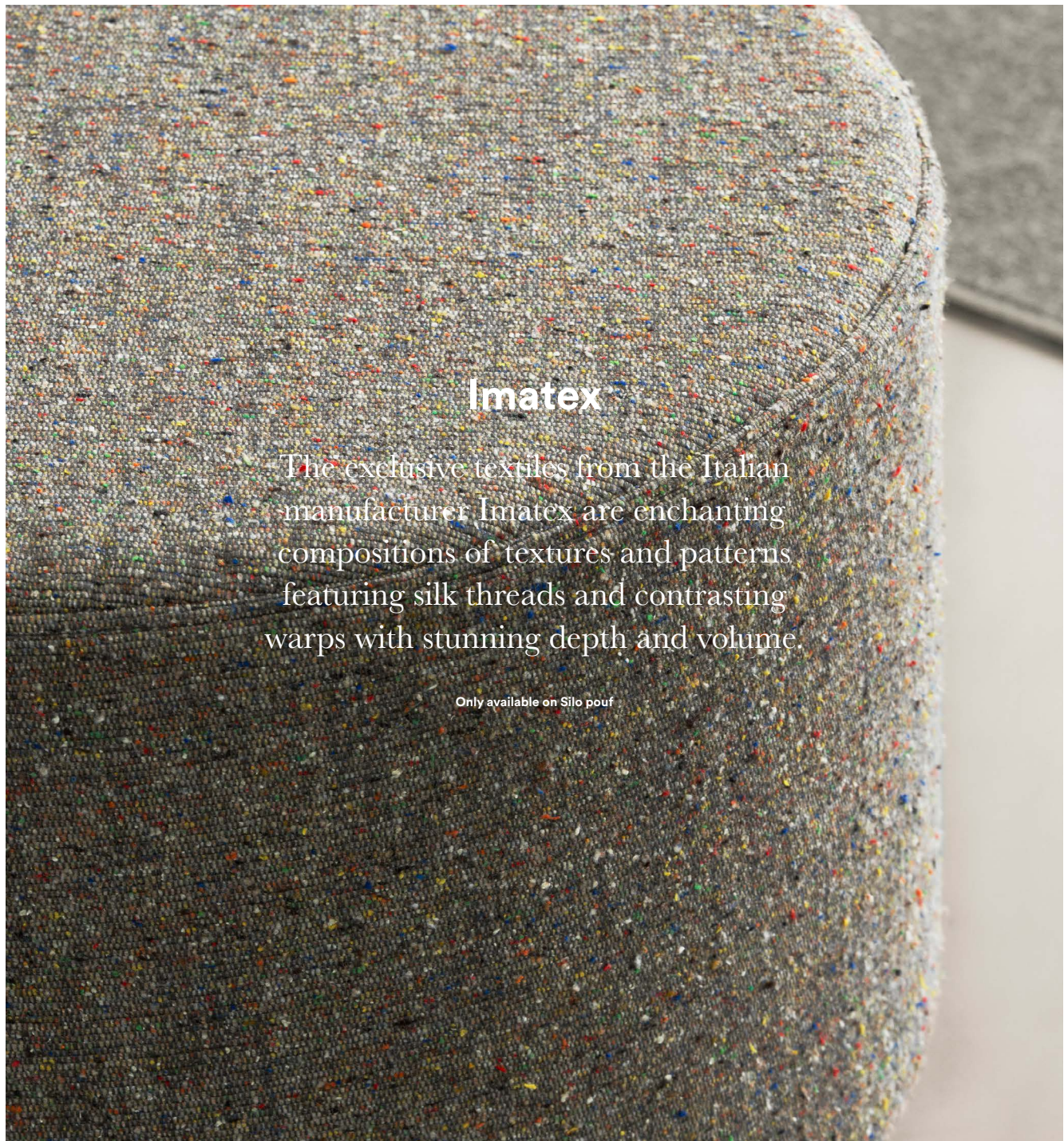
CA7832/234



CA7832/263



Form armchair full upholstery in JAB City Velvet/
CA7832/074 with lacquered oak legs

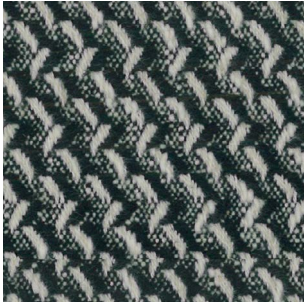


Imatex

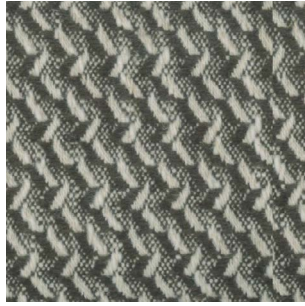
The exclusive textiles from the Italian manufacturer Imatex are enchanting compositions of textures and patterns featuring silk threads and contrasting warps with stunning depth and volume.

Only available on Silo pouf

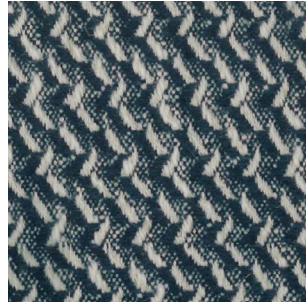
Manufacturer	Imatex	Abrasion resistance	Albagia: 30.000 martindale Bolgheri: 30.000 martindale Wynwood/Z: 25.000 martindale
Composition	Albagia: 75% cotton, 17% viscose, 8% linnen Bolgheri: 35% viscose, 26% wool, 17% polyamide, 15% silk, 7% linnen Wynwood/Z: 36% acylic, 27% viscose, 11% polyester, 9% cotton, 8% linnen, 6% wool, 2% alpaca, 1% silk	Color fastness to rubbing	Wet:4, Dry:4/5
Weight	Albagia: 540/550 g/m2 Bolgheri: 960/970 g/m2 Wynwood/Z: 750/760 g/m2	Color fastness to light	5
		Pilling	3/4
		Flammability	Bolgheri: BS 5852 Source 0: PASS BS 5852 Source 1: PASS CAL 117: PASS



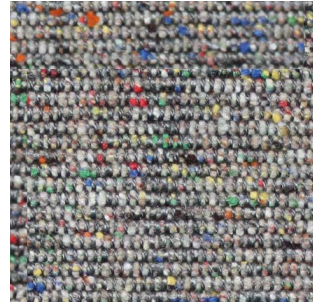
Albagia 15/330
201



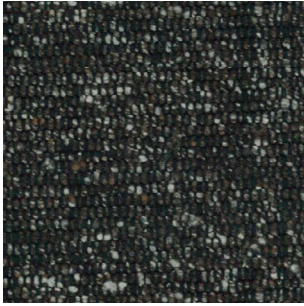
Albagia 15/330
214



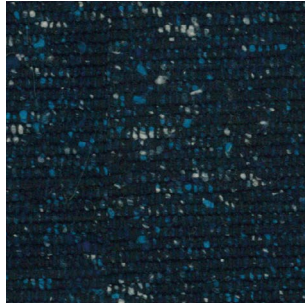
Albagia 15/330
288



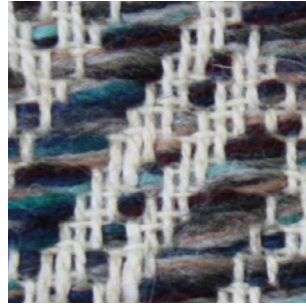
Bolgheri 96/5461
LAN7



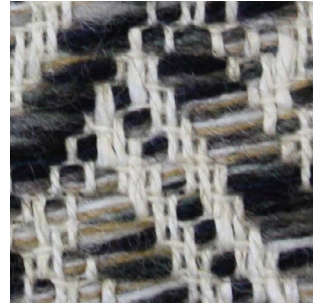
Bolgheri 96/5461
LNE4



Bolgheri 96/5461
LNE8



Wynwood/Z 96Z/5743
8



Wynwood/Z 96Z/5743
10



Wynwood/Z 96Z/5743
13

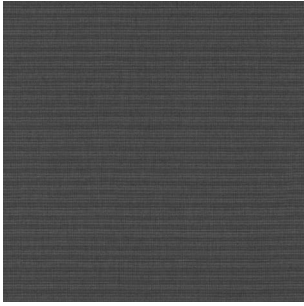


Sunbrella

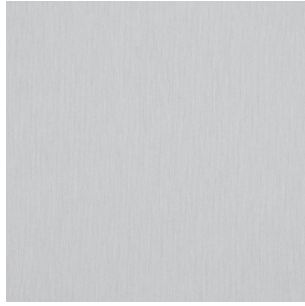
From production to use, Sunbrella® fabrics combine quality with durability to reduce their impact on the environment.

Only available on Allez chair

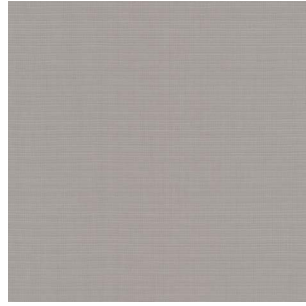
Manufacturer	Sunbrella	Color fastness to rubbing	Wet:5, Dry:5
Composition	100% Sunbrella® Acrylic	Wash colour fastness 30°C	5
Finish	Water-repellent & stain-proof	Colour fastness uv indoor	8
Weight	260 g/m ²	Colour fastness to weather outdoor	4-5
Abrasion resistance	30.000 martindale	Pilling	5



Canvas Charcoal
SJA 3705 137



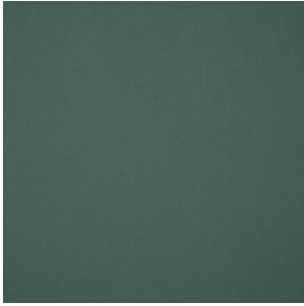
Canvas Marble
SJA 3966 137



Canvas Shingles
SJA 3706 137



Canvas Stone
SJA 3988 137



Canvas Alpine
SJA 3987 137

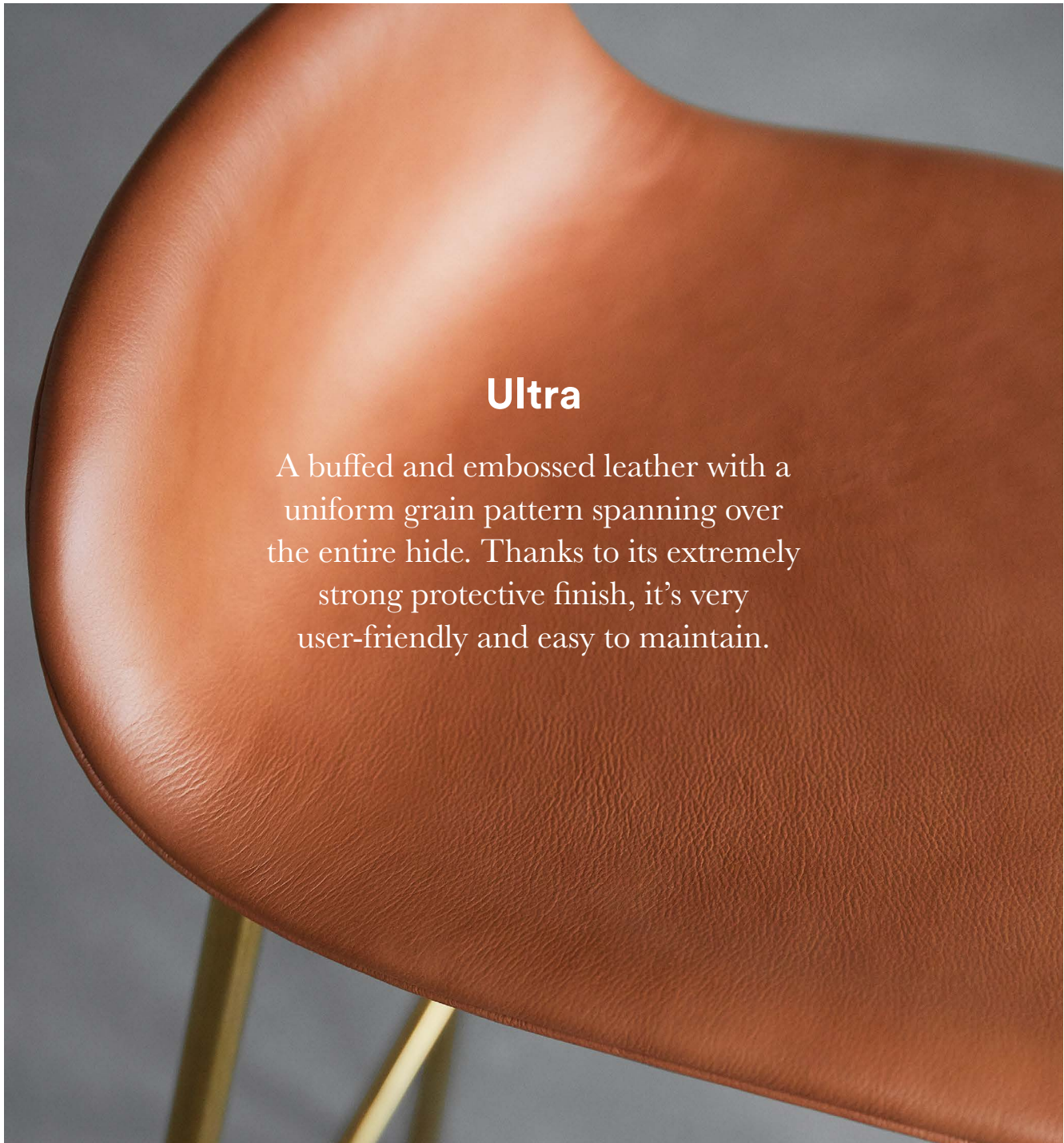


ARNOLD SCHWARZENEGGER ENCYCLOPEDIA OF MODERN BODYBUILDING

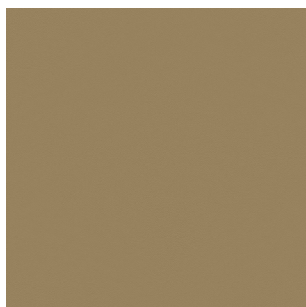
Leathers

We offer high-quality top grain natural leather from Sørensen Leather for our upholstery. We work with three different styles, each with specific attributes that accommodate diverse needs.

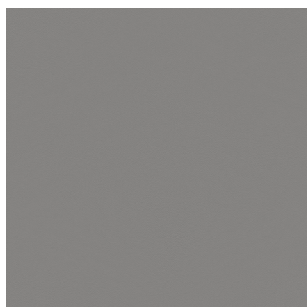




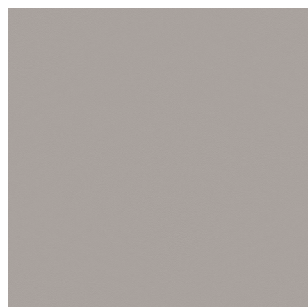
Manufacturer	Sørensen Leather	Color fastness to rubbing	Wet 250 rubs: 4, Dry 500 rubs: 4-5, Perspiration 80 rubs: 4 (DIN EN ISO 11640)
Thickness	0.9 – 1.1 mm	Color fastness to light	6-7 (DIN EN ISO 105-B02)
Origin	Non-European	Flammability test	CA TB 117-2013 – Non-ignition
Finish	Extremely strong surface protection	Cigarette + match	BS EN 1021-1 and 2 – Non-ignition
Tannage	Chrome	Environment	PCP: According to EU Council Directive 76/769/EEC AZO dyes: According to EU Council Directive 76/769/EEC Chrome VI: Our leather does not contain chrome VI REACH: According to European Community Regulation on chemicals and their safe use (EC 1907/2006)
Dye	Water-based aniline dye		



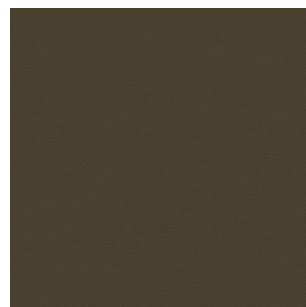
Leaf
41566



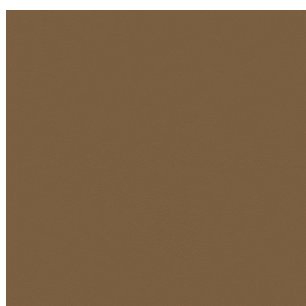
Smoke
41567



Oat
41568



Moss
41569



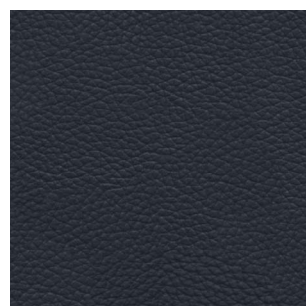
Marsh
41570



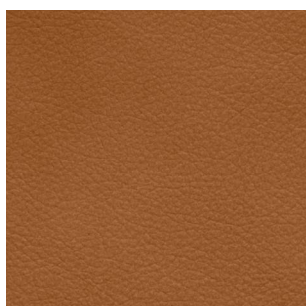
Camel
41571



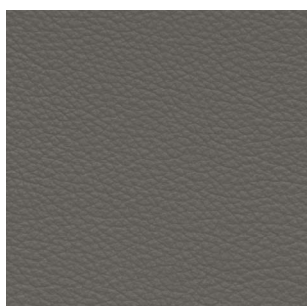
Honey
41572



Navy
41573



Brandy
41574



Lava
41575



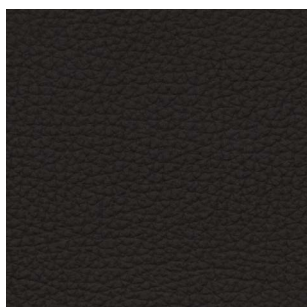
Altweiss
41576



Poppy
41578



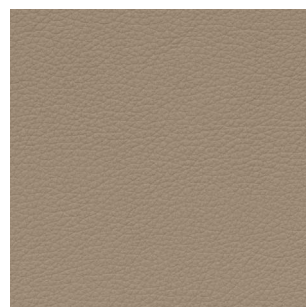
Brick
41579



Anthrazit
41580



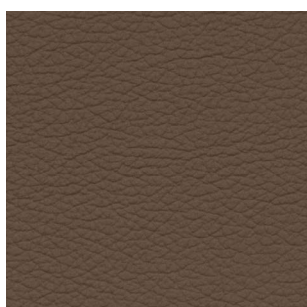
Eggshell
41581



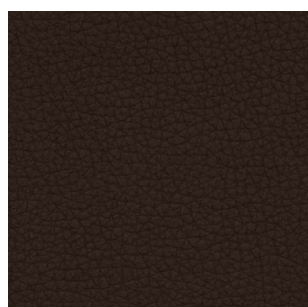
Earth
41584



Grey
41585



Safari
41586



Chocolate
41589



Black Brown
41590

Leathers **Ultra**

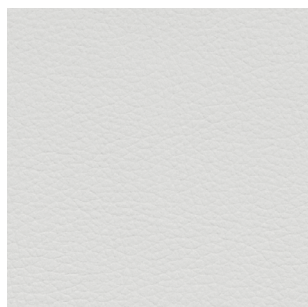
Right:

Era lounge chair high swivel aluminum in Sørensens Ultra leather/Black

Below:

Hyg lounge chair high swivel black aluminum in Sørensens Ultra leather/ Lava, Safari & Eggshell

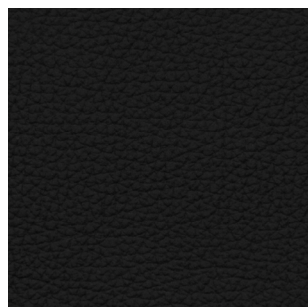




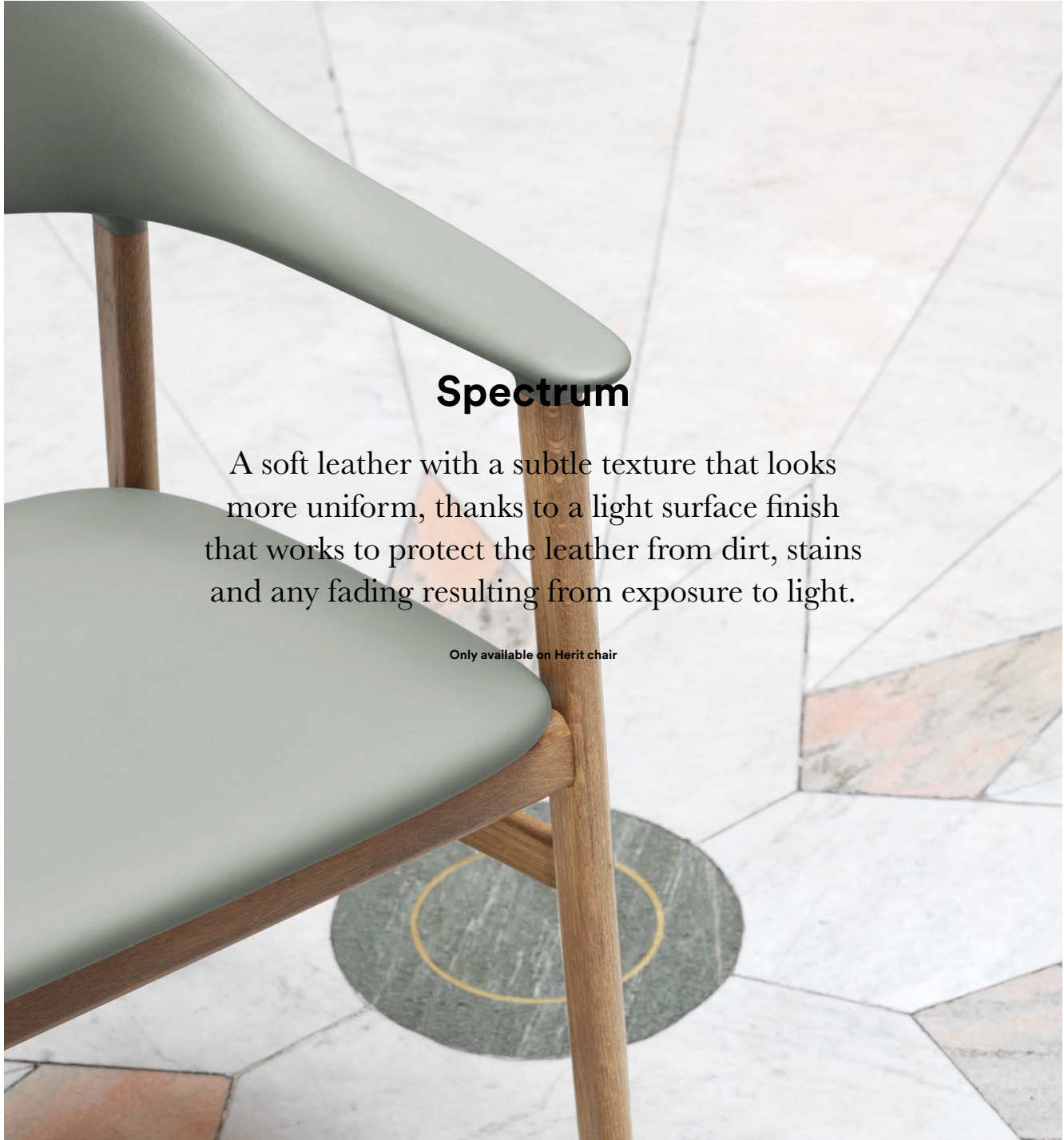
White
41594



Cognac
41598



Black
41599

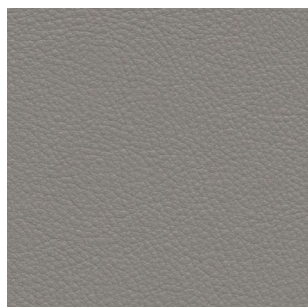


Spectrum

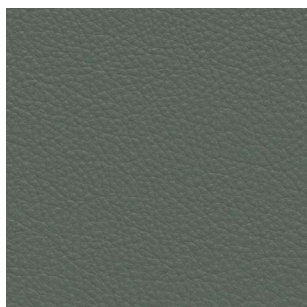
A soft leather with a subtle texture that looks more uniform, thanks to a light surface finish that works to protect the leather from dirt, stains and any fading resulting from exposure to light.

Only available on Herit chair

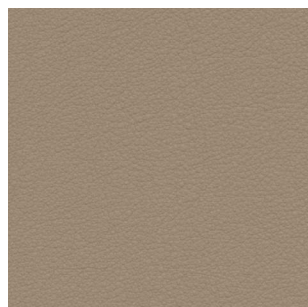
Manufacturer	Sørensen Leather	Color fastness to rubbing	Wet 250 rubs: 4-5, Dry 500 rubs: 4, Perspiration 80 rubs: 4 (DIN EN ISO 11640)
Thickness	1.0 – 1.2 mm	Color fastness to light	6 (DIN EN ISO 105-B02)
Origin	European rawhide, typically from Italy, Germany, Austria, Switzerland and Scandinavia	Flammability test	CA TB 117-2013 – Non-ignition
Finish	Light surface protection	Cigarette + match	BS EN 1021-1 and 2 – Non-ignition
Tannage	Chrome	Environment	PCP: According to EU Council Directive 76/769/EEC AZO dyes: According to EU Council Directive 76/769/EEC Chrome VI: Our leather does not contain chrome VI REACH: According to European Community Regulation on chemicals and their safe use (EC 1907/2006)
Dye	Water-based aniline dye		



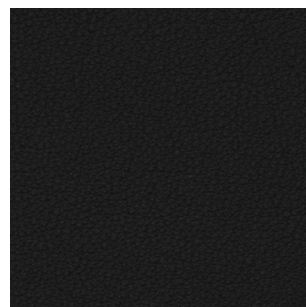
Cloud
30079



Agave
30098



Marble
30105



Black
30114



White
30140

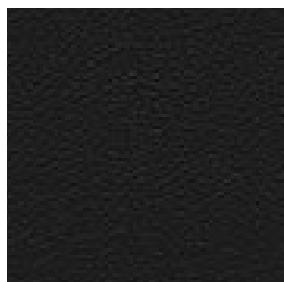
Optimo

A top-notch leather that is surprisingly soft yet sturdy, making comfort a pure pleasure in any type of seating solution.

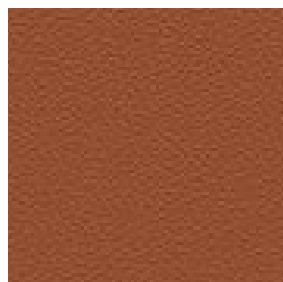
Only available on Rope sofa



Manufacturer	Sørensen Leather	Color fastness to rubbing	Wet 250 rubs: 3-4, Dry 500 rubs: 4, Perspiration 80 rubs: 3-4 (BS EN ISO 11640)
Thickness	1.1 – 1.3 mm	Color fastness to light	5 (BS EN ISO 105-B02)
Origin	European rawhide, typically from Italy, Germany, Austria and Switzerland	Flammability test	TB 117 - 2013
Finish	Extremely strong surface protection	Cigarette + match	BS EN 1021-1 and 2
Tannage	Chrome-free	Environment	PCP: According to EU Council Directive 76/769/EEC AZO dyes: According to EU Council Directive 76/769/EEC Chrome VI: Our leather does not contain chrome VI REACH: According to European Community Regulation on chemicals and their safe use (EC 1907/2006)
Dye	Water-based aniline dye		



Black
41703



Cognac
41704



Dark brown
41705



Grey
41706



Nougat
41707



Brown
41708



White
41710



Wood

We work with many types of wood depending on the design and purpose, but always with a focus on creating high-quality furniture. All wood used in our furniture production comes from sustainable forestry.

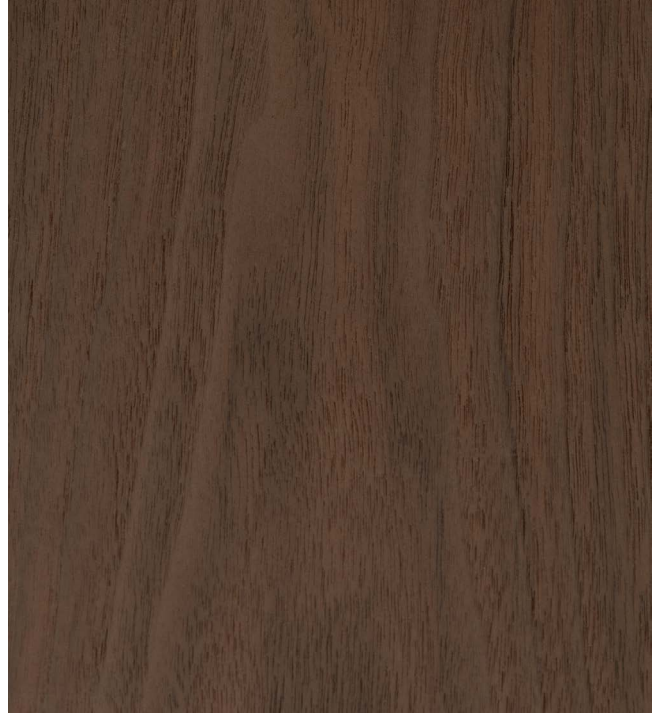
Environmental profile:

All wood follows the EUTR (EU Timber Regulation), which ensures the legal sourcing of the wood. The majority of the wood we use comes from FSC-certified forestry. Our varnish is water based. All composite wood products meet the strict US requirements for Formaldehyde emission: Title VI of the Toxic Substances Control Act (TSCA)



Oak
My Chair – shell & legs (lacquered oak veneer)
Just chair – shell & legs (lacquered oak veneer)
Studio chair – shell (lacquered oak veneer)
Ace chair – legs (lacquered oak)
Form chair – legs (lacquered oak)
Herit chair – legs (lacquered oak)
Pad lounge chair - shell (lacquered oak veneer)
Era – legs (lacquered oak veneer)
Allez chair – legs (lacquered oak)
Hyg chair & barstool wood – legs (lacquered oak)

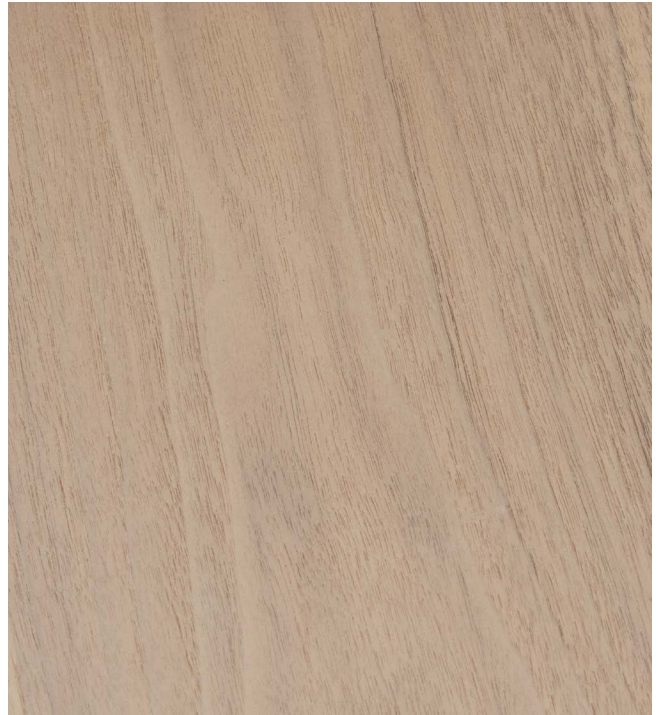
Form café table – tabletop (lacquered oak veneer)
Slice table – tabletop (lacquered oak veneer)
Scala table – tabletop (lacquered oak veneer)
Lunar – tabletop (lacquered oak veneer)
Allez table – tabletop (lacquered oak veneer)



Walnut
My Chair – shell (& legs (lacquered walnut veneer)
Form chair – legs (lacquered walnut veneer)
Era - legs (lacquered walnut veneer)

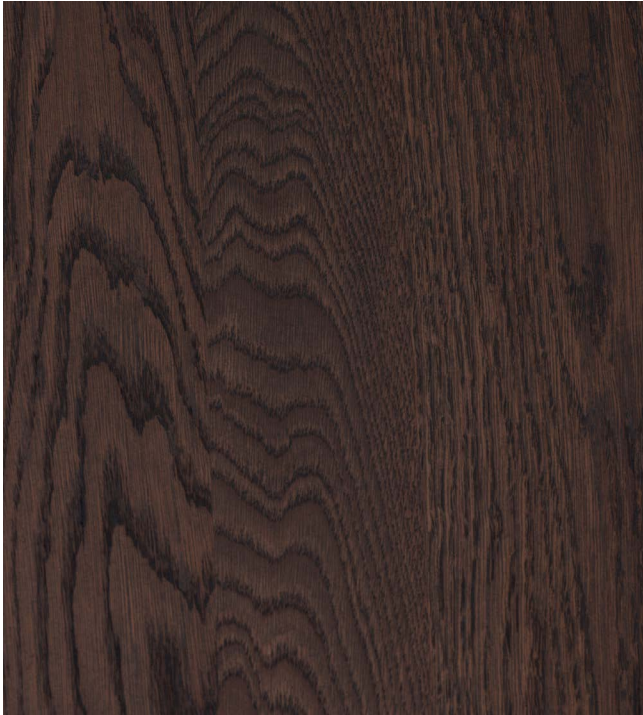


Ash
Just chair – shell & legs (lacquered ash veneer)



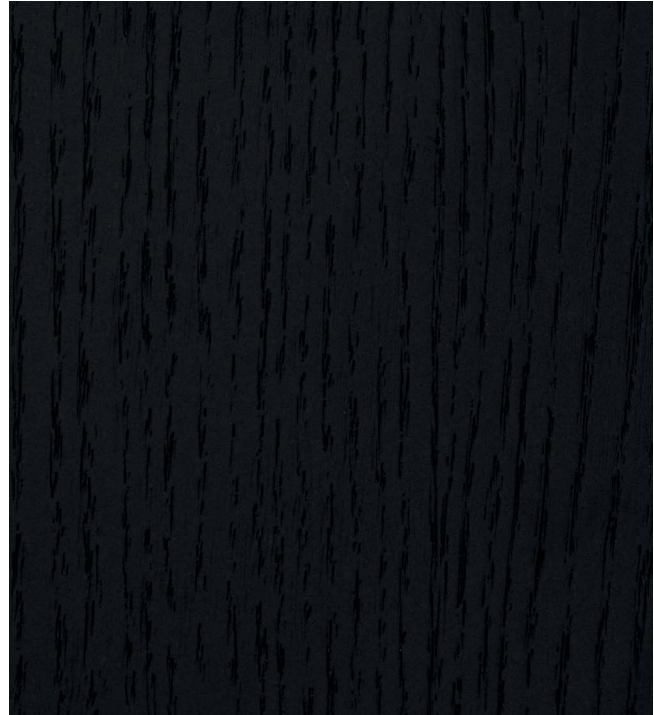
Birch
My Chair – shell & legs (lacquered birch veneer)

Woods



Smoked Oak

Ace chair – legs (painted and lacquered oak)
Herit chair – legs (painted and lacquered oak)
My Chair – shell & legs (painted and lacquered ash veneer)



Black

Studio chair – shell (painted and lacquered ash veneer)
Form chair – legs (painted and lacquered oak)
Ace – legs (painted and lacquered oak)
My Chair – shell & legs (painted and lacquered ash veneer)
Just chair – shell & legs (painted and lacquered ash veneer)
Knot chair – shell & legs (painted and lacquered ash)
Pad - shell (painted and lacquered ash veneer)
Hyg chair & barstool wood – legs (painted and lacquered oak)

Timb - frame (painted and lacquered ash.) Seat and back (painted and lacquered ash veneer.)
Form café table – tabletop (painted oak veneer)
Scala table – tabletop (lacquered oak veneer)
Lunar – tabletop (lacquered oak veneer)
Allez table – tabletop (lacquered oak veneer)



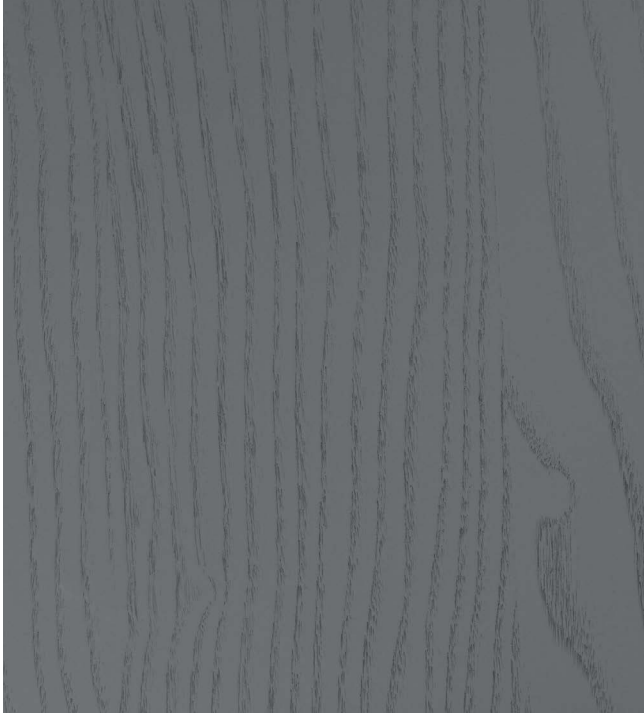
White

My Chair – shell & legs (painted and lacquered ash veneer)
Knot chair – shell & legs (painted and lacquered ash)



Light Grey

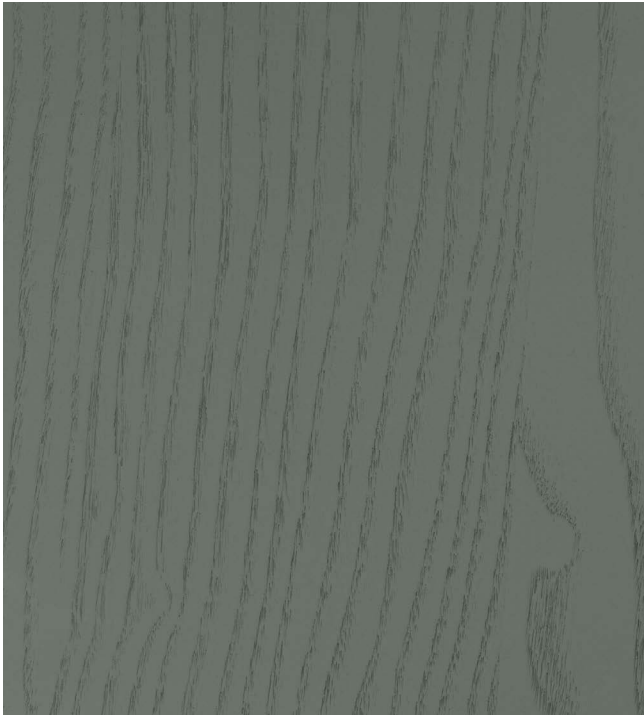
My Chair – shell & legs (painted and lacquered ash veneer)
Studio chair – shell (painted and lacquered ash veneer)



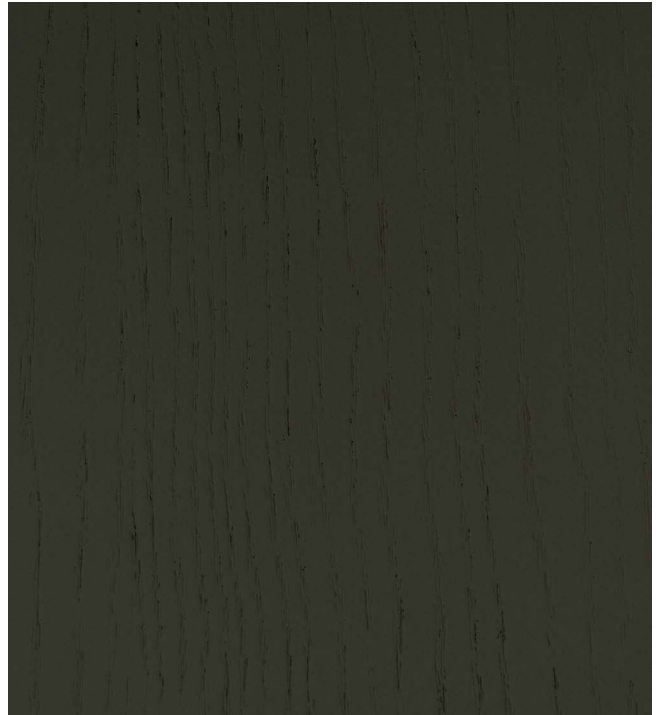
Grey
My Chair – shell & legs (painted and lacquered ash veneer)



Oyster
My Chair – shell & legs (painted and lacquered ash veneer)



Dusty Green
My Chair – shell & legs (painted and lacquered ash veneer)



Moss
My Chair – shell & legs (painted and lacquered ash veneer)



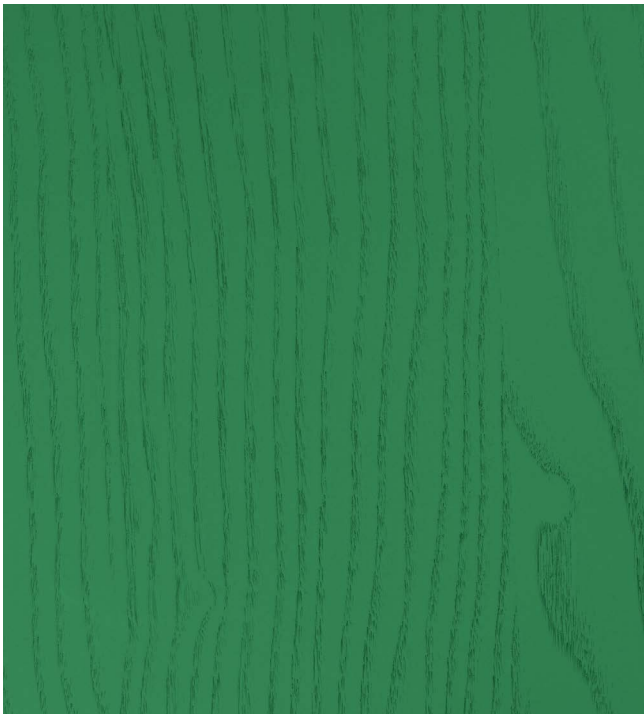
My Chair with shell and legs in painted and lacquered ash veneer in various colors



Sandstone
My Chair – shell & legs (painted and lacquered ash veneer)



Brown
Studio chair – shell (painted and lacquered ash veneer)



Green
Studio chair – shell (painted and lacquered ash veneer)



Tan
Timb - frame (painted and lacquered ash.) Seat and back (painted and lacquered ash veneer.)

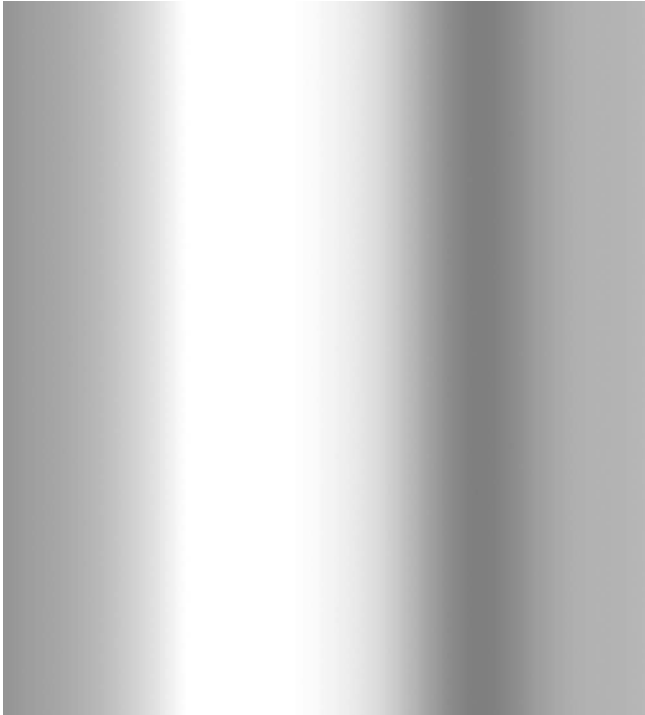
Metal

Metal is a strong and maintenance-friendly choice of material and provides a striking contrast to wood and other materials. We use cold-steel, stainless steel and aluminum alloy in our furniture.

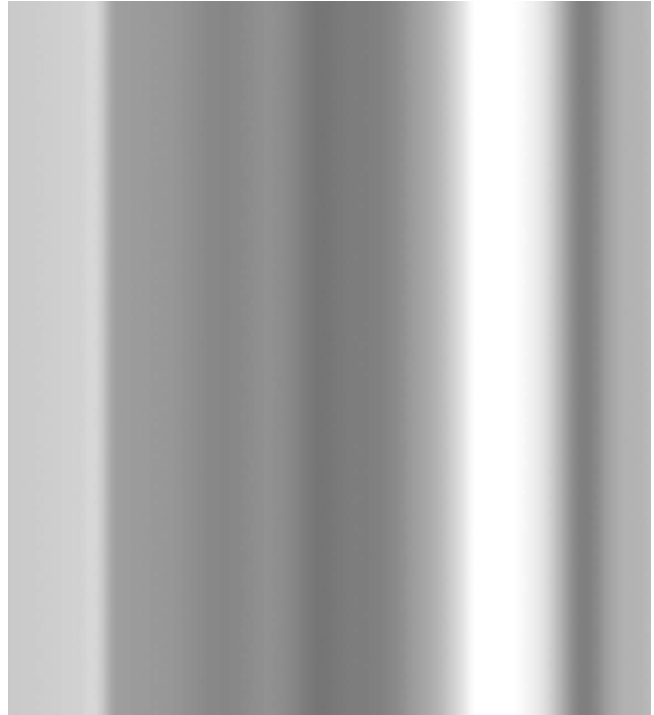


Environmental profile:

We use powder coating, PVD or Chrome coating. Powder coating does not contain any VOC (Volatile Organic compounds). Coatings meet the REACH regulation. During 2020, we will change our production methods using only Chrome 3 when electroplating.



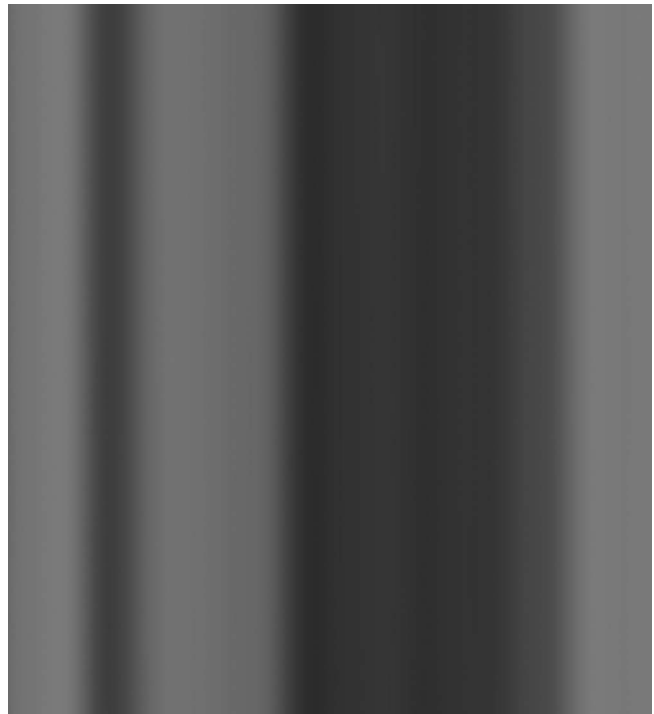
Aluminum
Era – swivel (aluminum)
Form chairs – swivel (aluminum)
Hyg chair & lounge – swivel (aluminum)
Sum – legs (aluminum)
Lunar – legs (aluminum)



Chrome
Era – legs (chrome)
Form chair – legs (chrome)
Just chairs – legs (chrome)
My Chair – legs (chrome)



Brass
Ace – legs (brass plated steel)
Form chair – legs (brass plated steel)

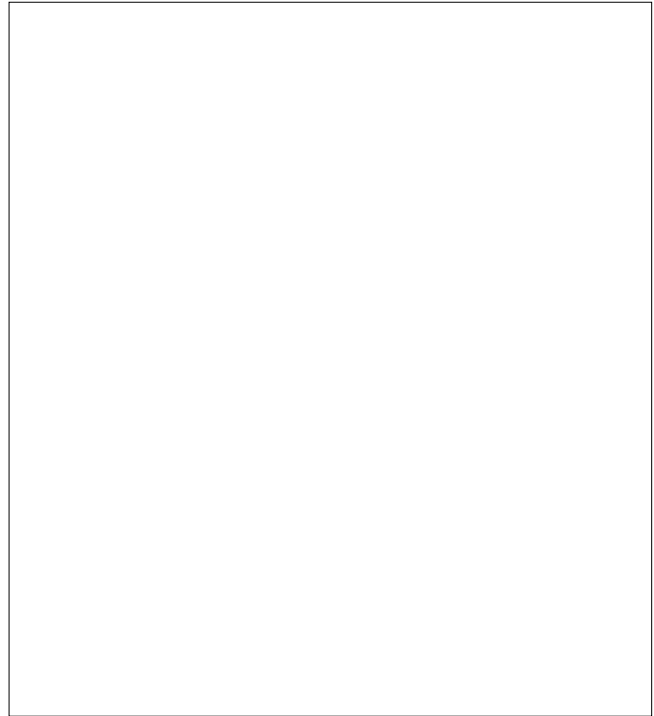


Black Metallic
Ace – legs (plated steel)

Metals



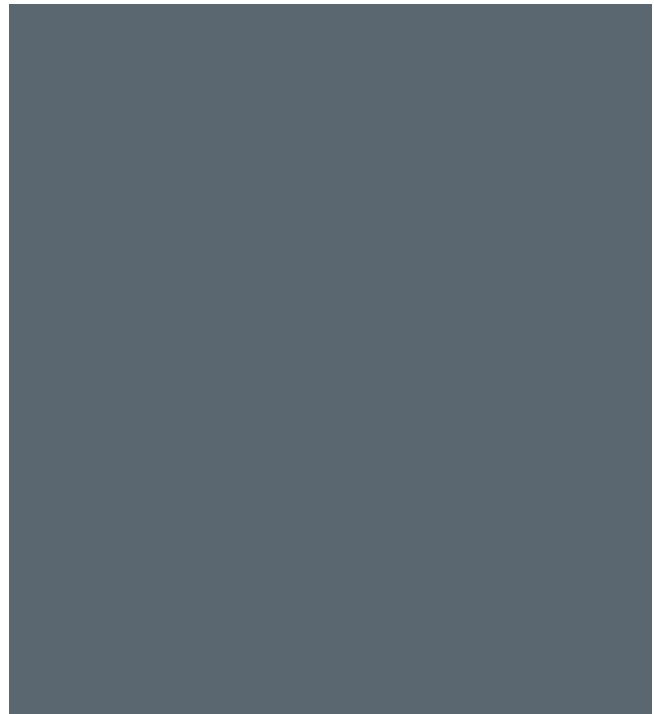
Black
Form chair – legs (lacquered steel)
Just chair – legs (lacquered steel)
Era – legs (lacquered steel)
Hyg chair – legs (lacquered steel)
Pad – legs (lacquered steel)
Studio chair – legs (lacquered steel)
Sum – legs (lacquered steel)
Scala – legs (lacquered steel)



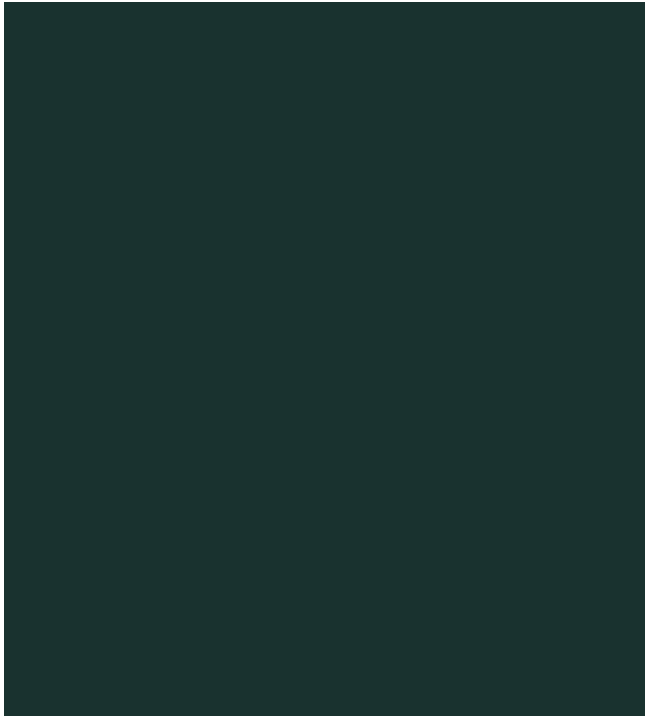
White
Form – legs (lacquered steel)
Hyg chairs – legs (lacquered steel)



Grey
Form – legs (lacquered steel)



Blue
Form – legs (lacquered steel)



Green
Form – legs (lacquered steel)



Red
Form – legs (lacquered steel)

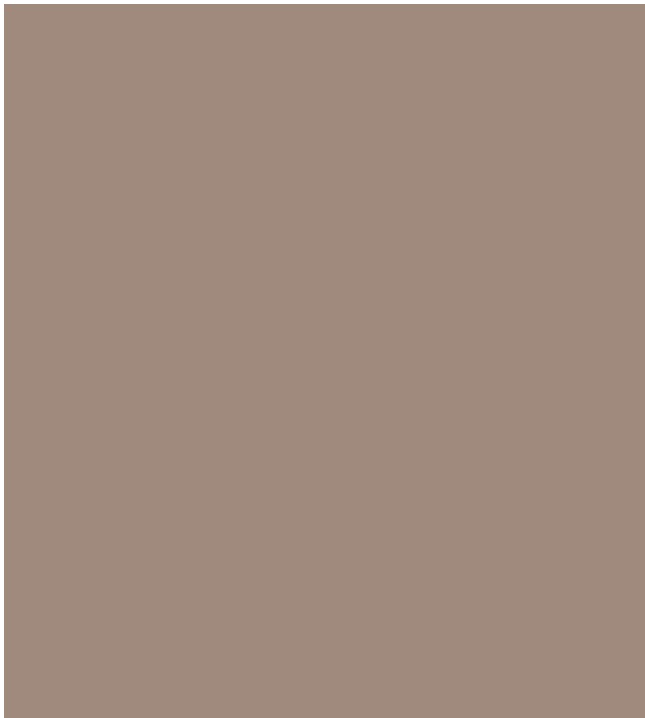


Grey
Hyg – legs (lacquered steel)

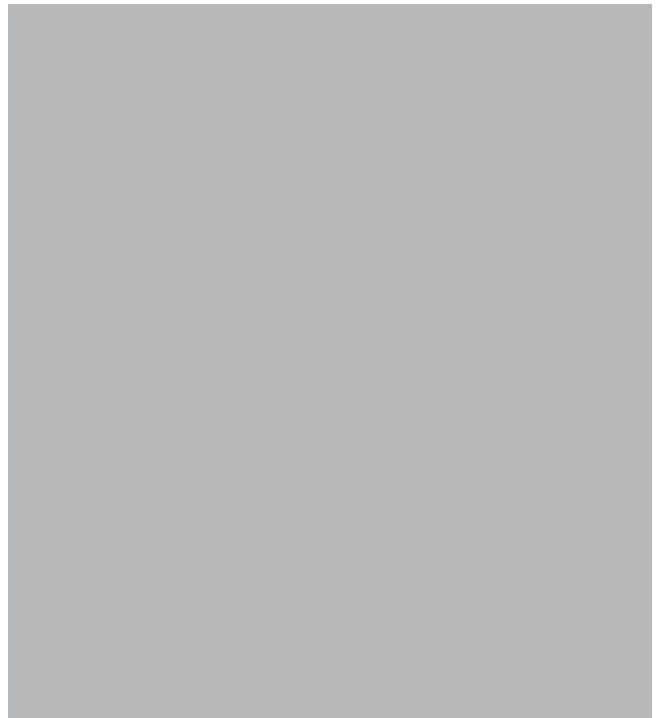


Olive
Hyg – legs (lacquered steel)

Metals



Sand
Hyg – legs (lacquered steel)



Grey
Pad – legs (lacquered steel)



Steel
Allez – tabletop
Form – tabletop
Scala – tabletop

Form chair swivel 5W aluminum with black polypropylene shell

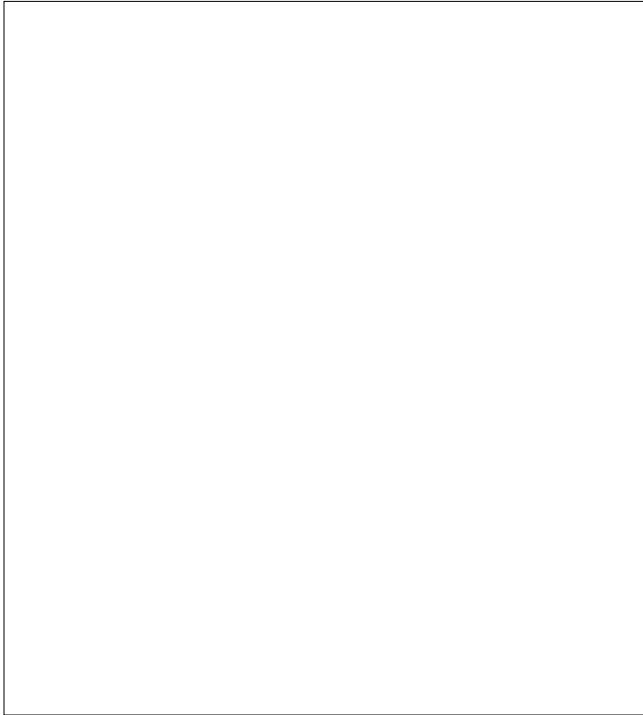


Polypropylene

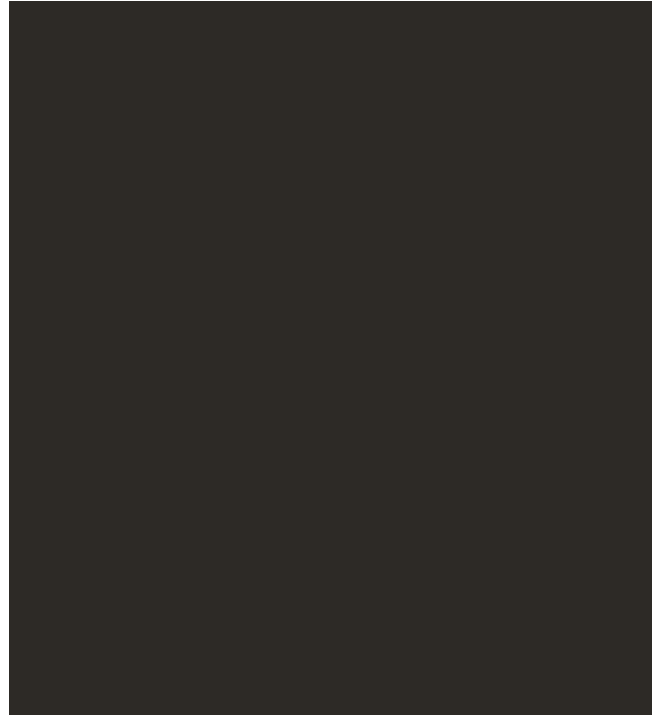
We use recyclable virgin polypropylene in our furniture production. The pure polypropylene offers high resistance and durability, which ensure a long lifetime for the product.

Environmental profile:

Polypropylene consumes low energy during production. It produces low carbon dioxide emissions when compared to other polymers. It can be recycled several times and be used in many different applications. Recycling or reclamation of the PP and other polymers should always be encouraged when possible. Our chairs are clearly marked with the material and recycling symbol.



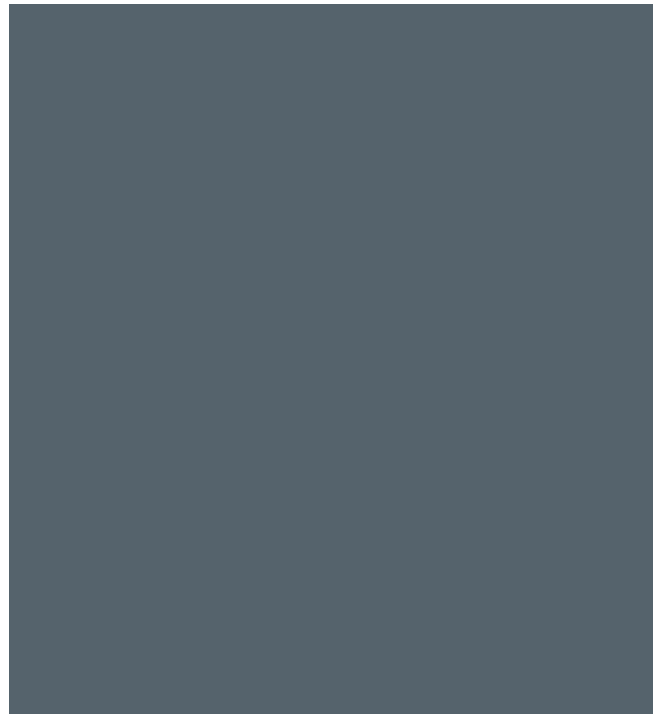
White
Form – shell (polypropylene)
Hyg – shell (polypropylene)
Herit – shell (polypropylene)



Black
Form – shell (polypropylene)
Hyg – shell (polypropylene)
Herit – shell (polypropylene)

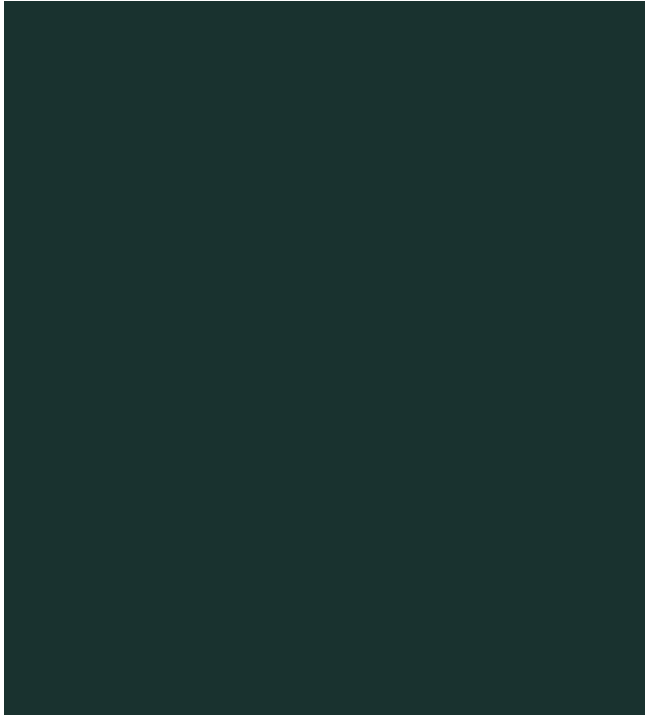


Grey
Form – shell (polypropylene)

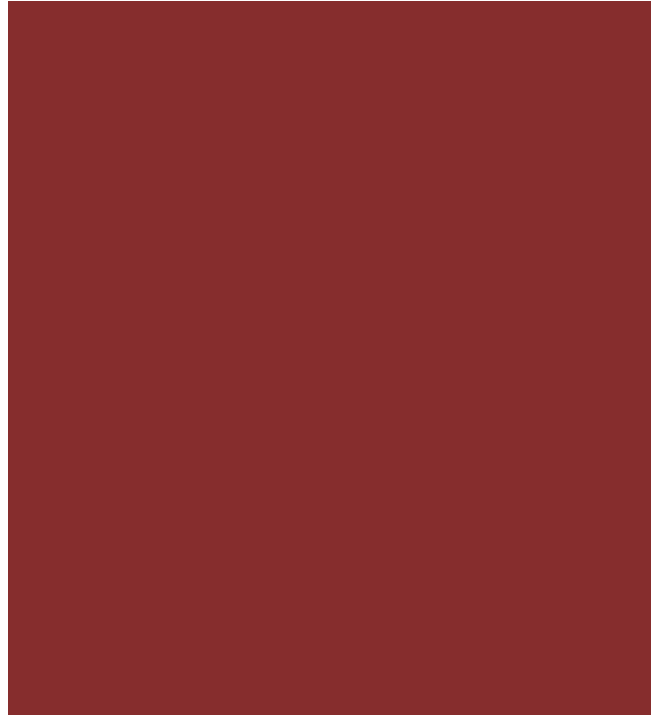


Blue
Form – shell (polypropylene)

Polypropylenes



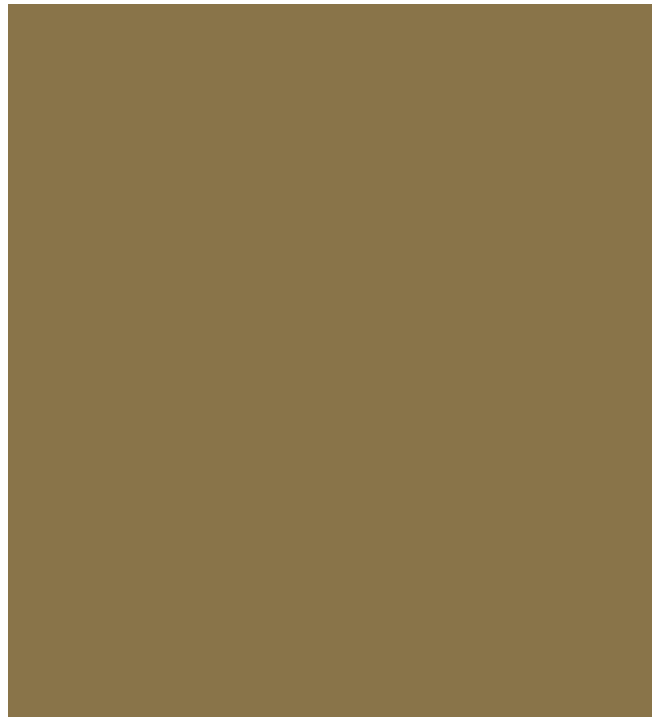
Green
Form – shell (polypropylene)



Red
Form – shell (polypropylene)



Grey
Hyg – shell (polypropylene)

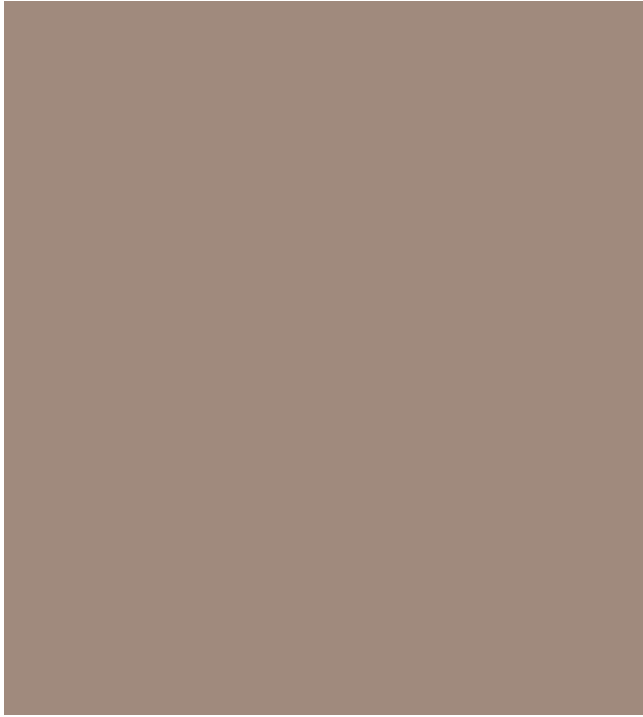


Olive
Hyg – shell (polypropylene)



Hyg chair with polypropoylene shell and lacquered steel legs in various colors

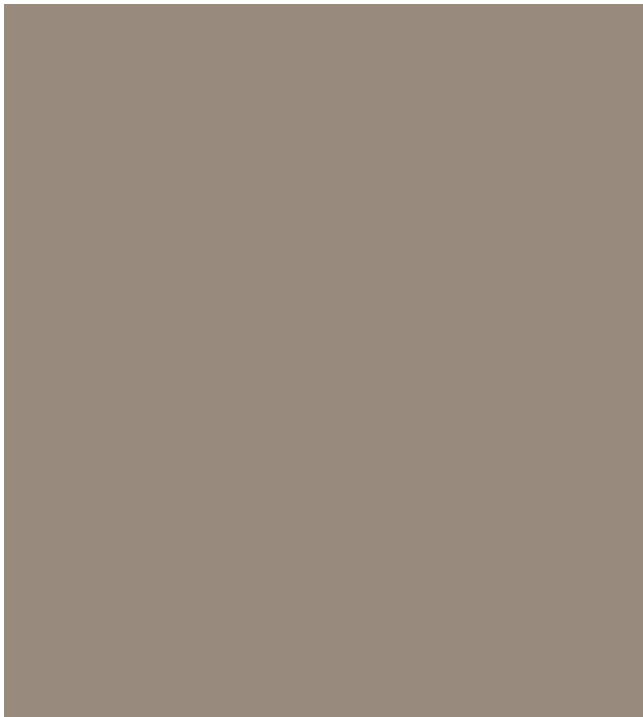
Polypropylenes



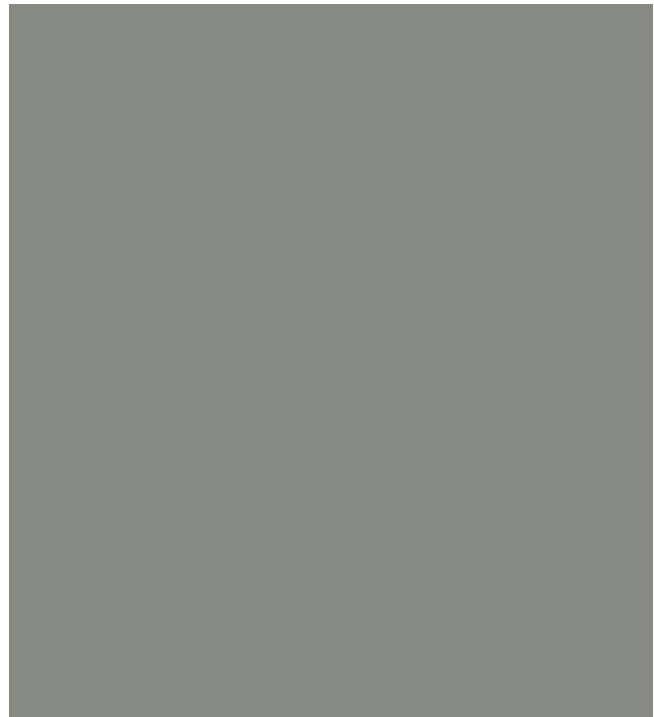
Sand
Hyg – shell (polypropylene)



Grey
Herit – shell (polypropylene)



Sand
Herit – shell (polypropylene)



Dusty Green
Herit – shell (polypropylene)

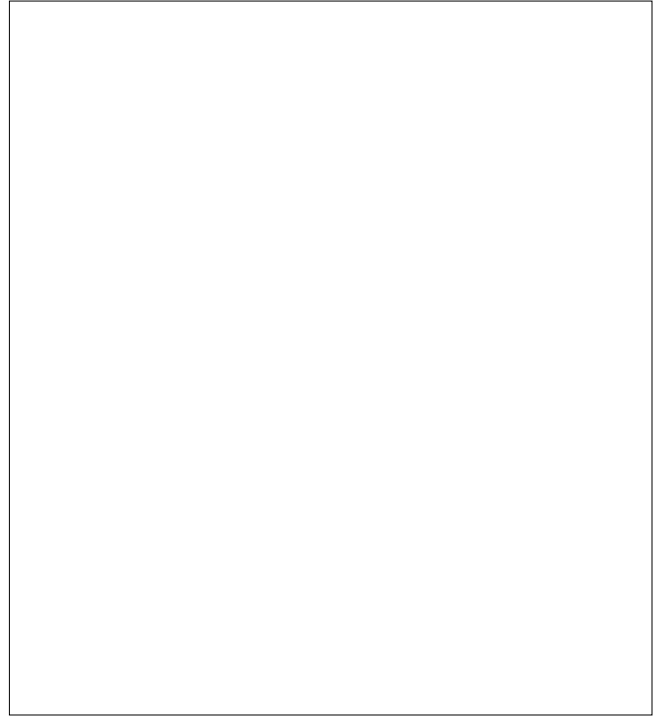
Herit chair and armchair in various combinations



Polypropylenes



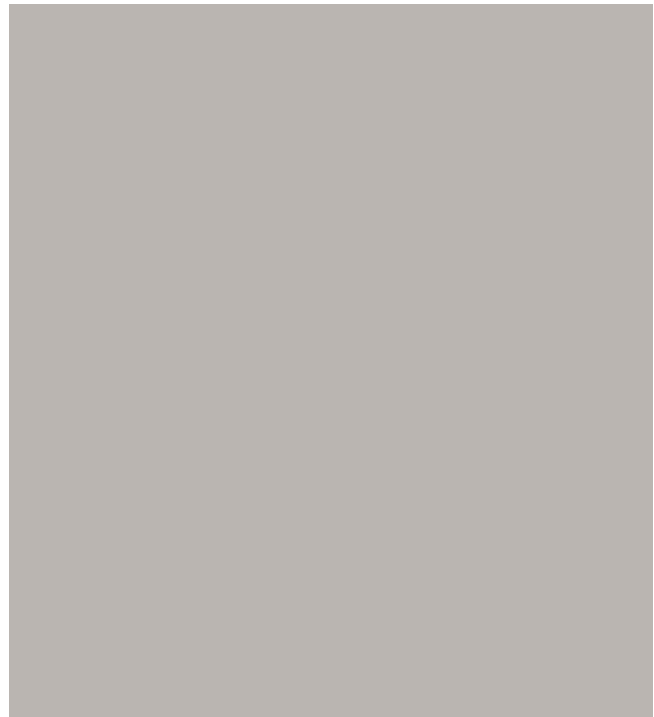
Black
Allez – main body & legs (polypropylene)



White
Allez – main body & legs (polypropylene)



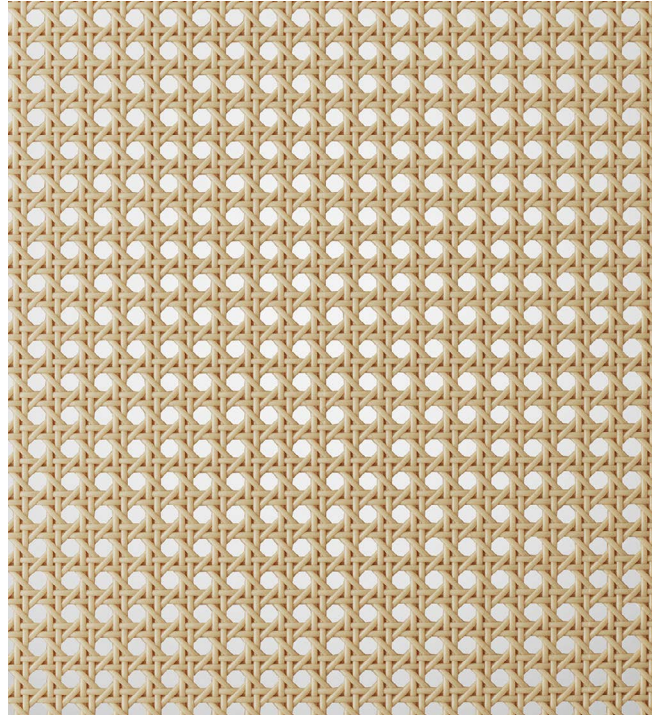
Grey
Allez – main body & legs (polypropylene)



Warm grey
Allez – main body & legs (polypropylene)



Park green
Allez – main body & legs (polypropylene)



Molded wicker seat
Allez – seat (polypropylene)

Stone

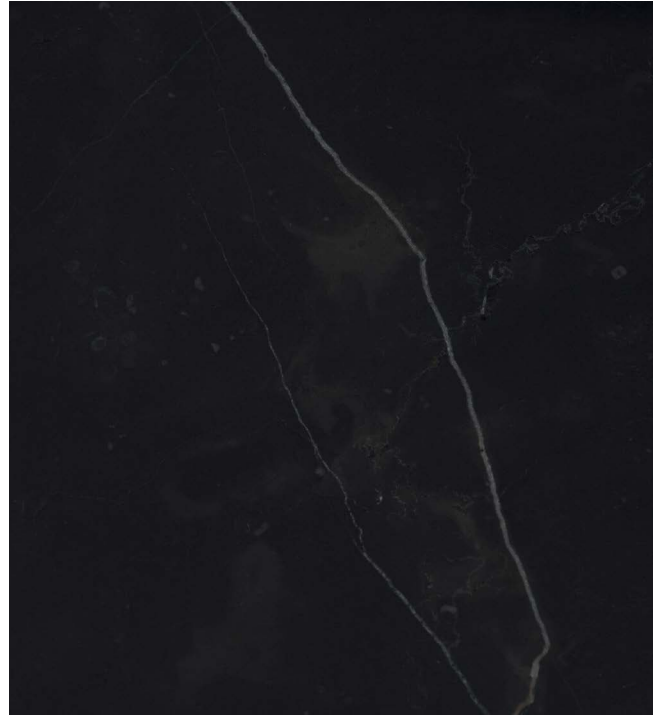
Stone materials have an innate beauty bestowed upon them by nature with natural variations making each piece unique in color and composition.

Environmental profile:

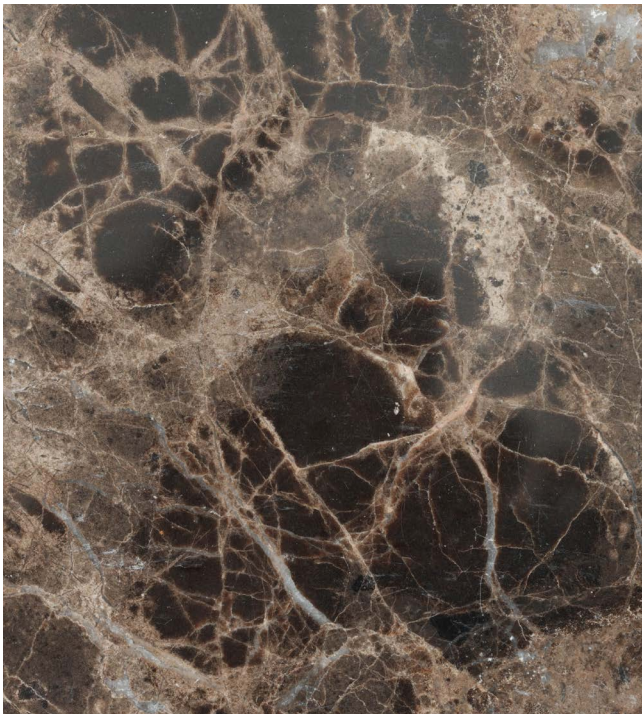
Stone requires energy-intensive manufacturing processes, however, it has the advantages of being a durable, recyclable and reusable material. We use a LOW VOC sealant to ensure minimal environmental impact.



White
Form café table – tabletop (marble)
Allez café table – tabletop (marble)
Scala café table – tabletop (marble)
Lunar coffee table – tabletop (marble)



Black
Form café table – tabletop (marble)
Allez café table – tabletop (marble)
Scala café table – tabletop (marble)
Lunar coffee table – tabletop (marble)



Coffee
Form café table – tabletop (marble)
Allez café table – tabletop (marble)
Scala café table – tabletop (marble)
Lunar coffee table – tabletop (marble)



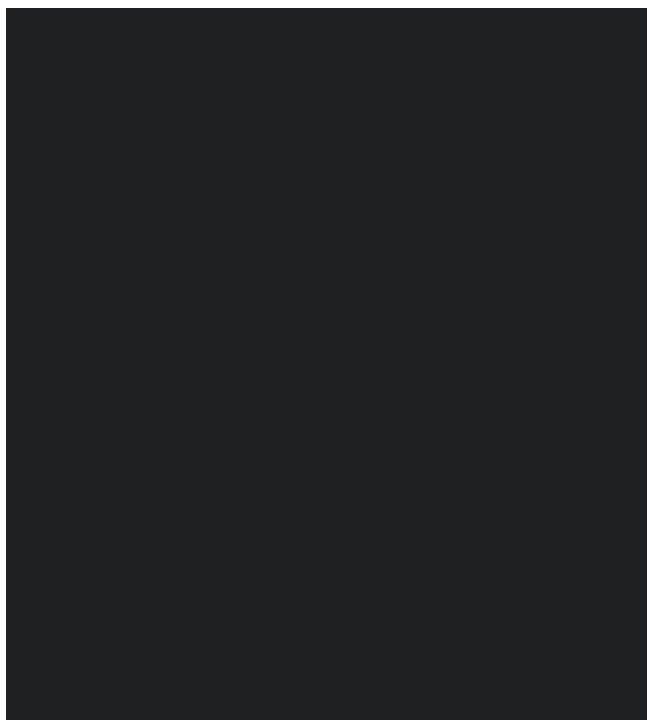
Sand
Form café table – tabletop (marble)
Allez café table – tabletop (marble)
Scala café table – tabletop (marble)
Lunar coffee table – tabletop (marble)

Linoleum

Linoleum is a natural material known to have anti-bacterial and self-healing properties. Our linoleum surfaces are made with Forbo's furniture linoleum, which is comfortable to touch and has a beautiful matte finish.

Environmental profile:

Linoleum is a natural material with low emission. Our supplier, Forbo, uses the Life Cycle Assessment (LCA) to measure their products' complete environmental performance. They collect installation off-cuts and help repurpose end-of-life waste into new products. The products are made in clean, efficient factories, powered by 100% renewable electricity.



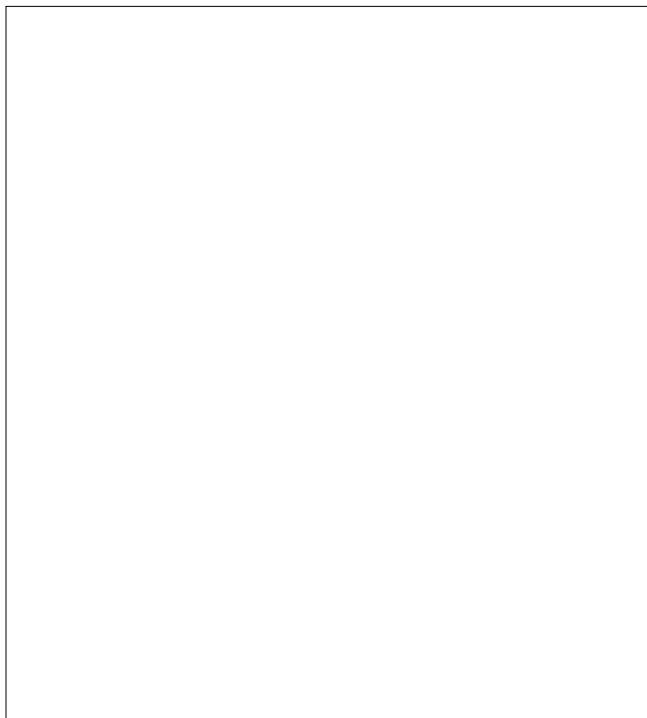
Nero
Slice table – tabletop (linoleum)

Laminate

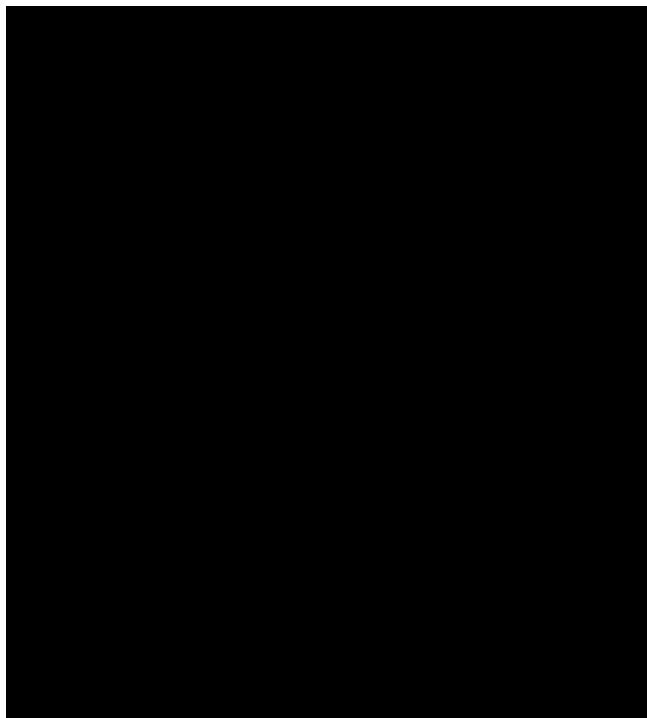
Our laminate tabletops are made with Fenix laminate, which has a silky-soft surface and neat technical properties such as low light reflectivity and anti-fingerprint.

Environmental profile:

Fenix is certified to Greenguard GOLD and M1 according to Building Information Foundation RTS (FENIX as a product designed for use in indoor spaces meets strict chemical emissions limits)



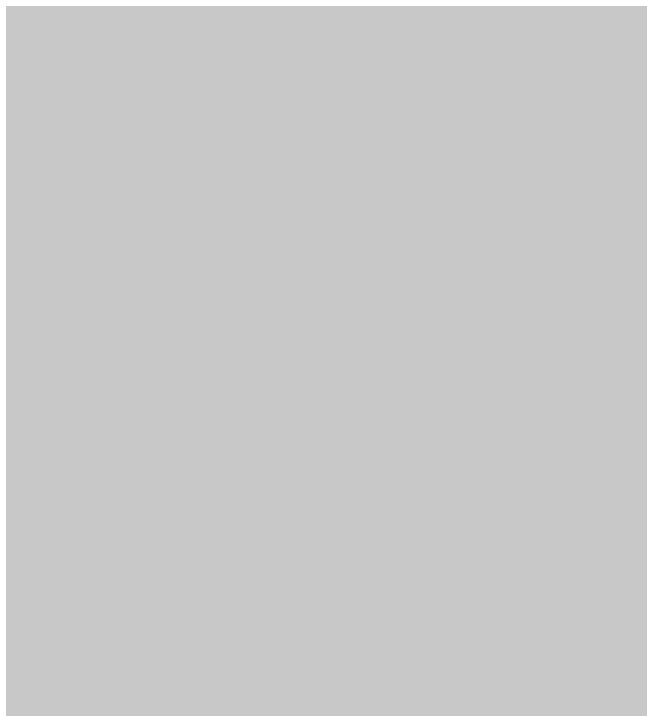
White
Union table – tabletop (laminate)
Journal table – tabletop (laminate)



Black
Union table – tabletop (laminate)
Journal table – tabletop (laminate)



Grey
Union table – tabletop (laminate)



Grey
Journal table – tabletop (laminate)

Care

Cleaning

Textiles

Avoid long-term exposure to direct sunlight and other light sources as the textile might inevitably fade.

Rope sofa: Adjust your sofa upon receipt. Straighten fabric on all modules and move piping to the right position. Press fabric down between each of the modules and between the backrest and the seat.

Clean with textile or upholstery cleaner.

Frequent vacuuming with a soft fitting is recommended to preserve color and appearance.

Stains should be removed immediately to avoid permanent damage.

Leather

Avoid placing the leather in direct sunlight or extreme heat.

Avoid soaking the leather or any contact with sharp objects.

Absorb any spills immediately, using a clean, dry cloth.

Dust and clean regularly according to instructions.

Dust using a vacuum cleaner with a soft brush.

Clean using the foam from soap flakes. Use a 1/2 deciliter of soap flakes to 1 liter of water. Whip the soap flakes into hot water. When the water becomes room temperature, the foam must be applied all over the leather with a soft cloth. Only use the foam and avoid soaking the leather. When the leather is dry, polish it with a soft, dry cotton cloth.

Never use detergents, ammonia, oils, polish, varnish, etc.

Woods

Veneer
Solid
Lacquered
Stained

Wipe any spills as soon as they occur to avoid them soaking in.

Never place hot items directly on the tabletop.

Clean with a damp cloth.

Never use abrasive cleaners, steel wool or polish.

Polypropylene

Avoid placing the furniture in direct sunlight or close to strong heat sources.

Clean the surface using a damp cloth wrung in a solution of water and neutral detergent. Afterwards, wipe the surface using a clean dry cloth.

Metals

Aluminum
Chrome
Powder coated steel

Powdercoated steel: Do not expose to extreme UV light to prevent color from fading.

Clean with a damp cloth wrung in a solution of water and neutral detergent.

Avoid using scouring cream or scouring pads as they may scratch the surface.

Care

Cleaning

Marble

Wipe any spills as soon as they occur to avoid them from soaking in.

Marble tabletops can be maintained with mild soap or soap flakes, which forms a light protective film on the surface. Use mild soap or soap flakes over time to make the surface more resistant to spots and give it a silky matte look.

Clean using a cleaning soap for all types of natural stone. Avoid the use of all-purpose cleaners and other degreasing detergents as well as substances containing acids.

Linoleum

We recommend using coasters under damp or colored items to avoid permanent stains.

Never place hot items directly on the linoleum tabletop.

Use linoleum care regularly to maintain the surface.

Wipe any spills as soon as they occur to avoid them from soaking in.

Only use a PH-neutral cleaning product on linoleum as alkaline detergents may deplete the linoleum.

Clean with a damp cloth wrung in a solution of water and a detergent made especially for linoleum. Remove soap residue immediately afterwards, using a clean, dry cloth.

Stains can be removed carefully using white spirit (minerals turpentine) or a damp nano-sponge with warm water or a linoleum product. Please note that the nano-sponge should not be used when dry.

Laminate

Never place hot items directly on the laminate.

Clean with a damp cloth wrung in a solution of water and all-purpose cleaner or household ammonia. Avoid using abrasive cleaners.

Remove soap residue immediately afterwards, using a clean, dry cloth.

Stains can be removed gently with a clean, damp cloth or nano-sponge wrung in warm water with 1 part vinegar to 10 parts water.

