

Material Guide



Take a tour through
our material options
and get inspired

Introduction p. 5

Colors p. 6

Striking reds p. 6 Blue waves p. 8 Earthy notes p. 10 Soft neutrals p. 12 Cool grays p. 14

Textile p. 16

Main Line Flax p. 18 Synergy p. 24 Zap p. 30 Yoredale p. 34 Aquarius p. 38

Oceanic p. 42 City Velvet p. 44 Imatex p. 52

Leather p. 54

Ultra p. 56 Spectrum p. 60 Victory p. 62

Wood p. 64

Metal p. 70

Polypropylene p. 76

Stone p. 82

Linoleum p. 84

Laminate p. 92

Care instructions p. 94



A tool for choosing

When high-quality materials
and beautiful colors come together
in perfect synergy.

Just as we have creative visions, we are sure that you do too, which is why many of our furniture models can be customized from a vast number of color and material combinations. Options call for decisions, but what to think about when choosing materials?

For us, the right choice is a synergy between look, feel and attributes corresponding to your needs. Maintenance and durability are important factors to consider when selecting finishes, and different contexts place different requirements on the choice of materials. Our material portfolio is created in close collaboration with some of the world’s leading suppliers of materials, who continue to raise the bar with their high standards for performance, sustainability and aesthetics.

Aesthetics are more than what meets the eye. Imagine, for example, the warm and soft feel of oak wood against the palm of your hand, or the tickling sensation as you stroke through the raised weave of a bouclé fabric. We believe tactility

is key in creating comfortable and inspiring environments, and we love to play with textures and finishes to evoke the senses. This belief reflects itself in our versatile assortment of qualities.

Ever since we started our journey, color has been an essential instrument in the toolbox we draw on to create our universes. Colors are truly amazing. They can be fun, calming or energizing, they can be strategic and seducing. They possess the power to set the mood and transform objects and spaces. Ranging from soothing neutrals to eye-popping brights, our color card offers a wealth of possibilities for personal expression.

Selecting and combining colors and materials can be an overwhelming task, which is where this tool comes in handy. The following pages will guide you through our wide range of materials to provide you with overview and inspiration for making the right choice for your project.

Studio armchair full upholstery Synergy Apt

Striking reds

statement
sophisticated
bold



Red
Powdercoated steel, p. 73



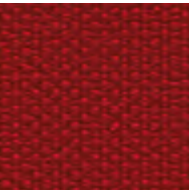
Synergy – Apt
Fabric, p. 29



Salsa
Linoleum, p. 85



Aquarius – Jezebel
Fabric, p. 39



Zap – OMG
Fabric, p. 31



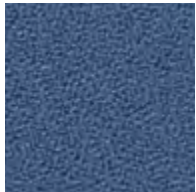
Red
Polypropylene, p. 78



Synergy – Global
Fabric, p. 29

Blue waves

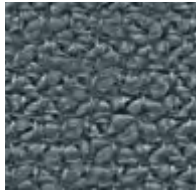
deep
fresh
powerful



Aquarius – Porcelain
Fabric, p. 39



City Velvet – CA7832/053
Fabric, p. 46



Yoredale – Dacre
Fabric, p. 36



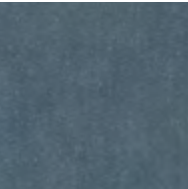
Yoredale – Fossdale
Fabric, p. 35



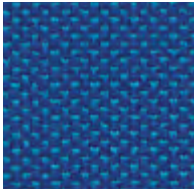
Blue
Powdercoated steel, p. 72



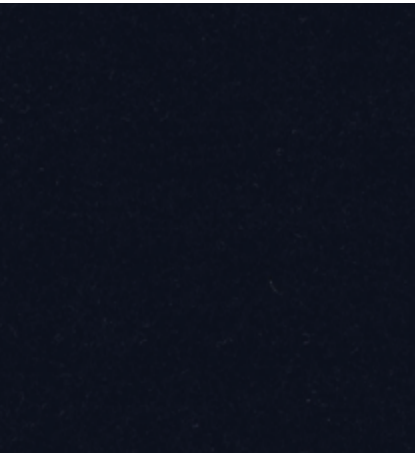
Aquarius – Smurf
Fabric, p. 39



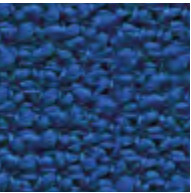
City Velvet – CA7832/050
Fabric, p. 46



Zap – Zoom
Fabric, p. 32



Synergy – Sync
Fabric, p. 27



Yoredale – Litton
Fabric, p. 35



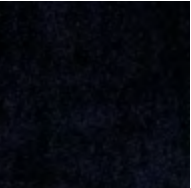
Zap – Whomp
Fabric, p. 32



Aquarius – Vico
Fabric, p. 40



Blue
Polypropylene, p. 77



City Velvet – CA7832/052
Fabric, p. 46

Ace chair full upholstery black steel Synergy Guild



Era lounge chair low black steel Ultra Brandy

Earthy notes

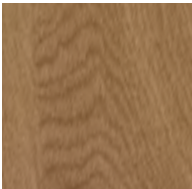
classic
inviting
exclusive



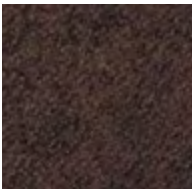
Ultra - Brandy
Leather, p. 57



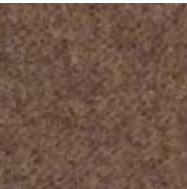
Synergy - Loop
Fabric, p. 25



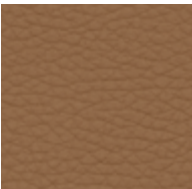
Oak
Wood, p. 65



Synergy - Collective
Fabric, p. 26



Synergy - Linea
Fabric, p. 26



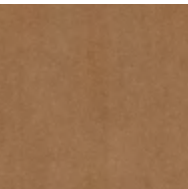
Victory - Nougat
Leather, p. 63



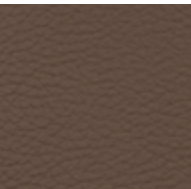
Ultra - Chocolate
Leather, p. 57



Yoredale - Carperby
Fabric, p. 35



City Velvet - CA7832/025
Fabric, p. 45



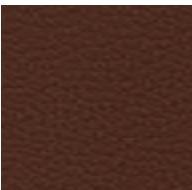
Ultra - Earth
Leather, p. 57



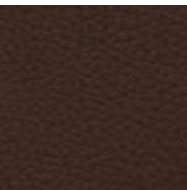
Main Line Flax - Bank
Fabric, p. 21



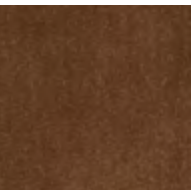
Main Line Flax - Stockwell
Fabric, p. 19



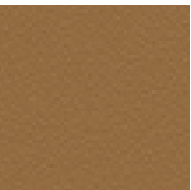
Ultra - Cognac
Leather, p. 59



Ultra - Brown
Leather, p. 57



City Velvet - CA7832/020
Fabric, p. 45



Ultra - Camel
Leather, p. 57



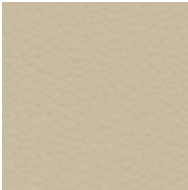
Main Line Flax - Mordon
Fabric, p. 19

Soft neutrals

calm
warm
natural



Synergy – Tag
Fabric, p. 25



Ultra – Marble
Leather, p. 57



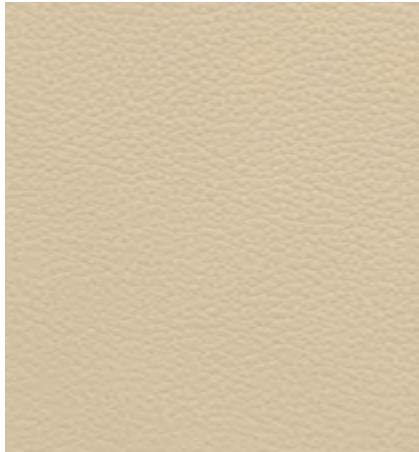
Main Line Flax – Archway
Fabric, p. 19



Synergy – Chain
Fabric, p. 25



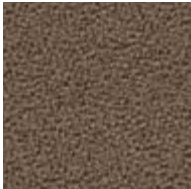
Ash
Wood, p. 65



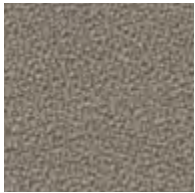
Ultra – Sand
Leather, p. 57



City Velvet – CA7832/074
Fabric, p. 47



Aquarius – Mushroom
Fabric, p. 39



Aquarius – Ceres
Fabric, p. 39



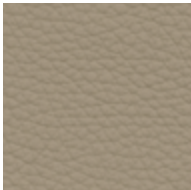
Synergy – Affix
Fabric, p. 25



Zap – Wham
Fabric, p. 32



Main Line Flax – Upminster
Fabric, p. 19



Victory – Kit
Leather, p. 63



Sand
Polypropylene, p. 80

Rope modular sofa Synergy Chain



Cool grays

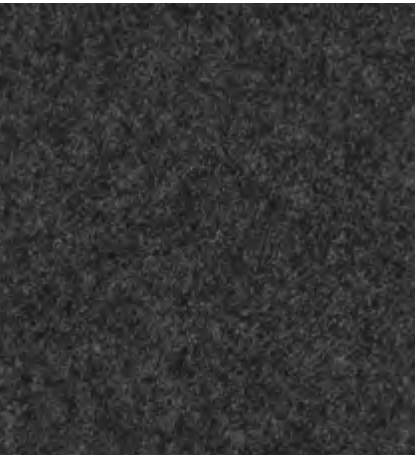
modern
sharp
clean



Main Line Flax – Temple
Fabric, p. 19



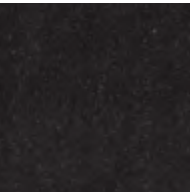
City Velvet – CA7832/092
Fabric, p. 49



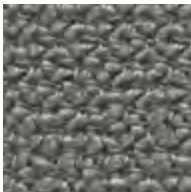
Synergy – Mix
Fabric, p. 25



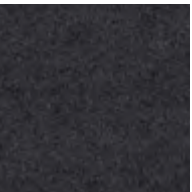
Yoredale – Leyburn
Fabric, p. 36



City Velvet – CA7832/093
Fabric, p. 49



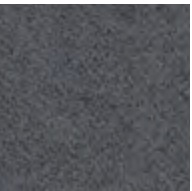
Yoredale – Harddraw
Fabric, p. 35



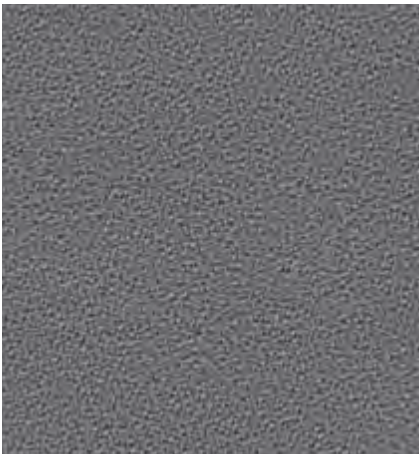
Synergy – Compound
Fabric, p. 25



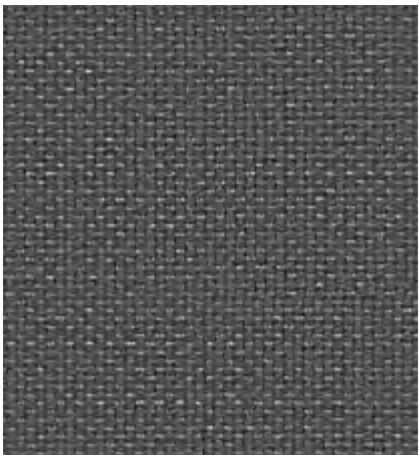
Aquarius – Heron
Fabric, p. 39



Synergy – Bond
Fabric, p. 25



Aquarius – Rhino
Fabric, p. 39



Zap – Puff
Fabric, p. 32



Zap – Splat
Fabric, p. 31



Synergy – Partner
Fabric, p. 25



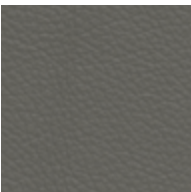
Grey
Polypropylene, p. 90



Gray
Wood, p. 67



Gray
Polypropylene, p. 78



Ultra – Lava
Leather, p. xx

Ace barstool full upholstery black steel Synergy Partner



Textiles

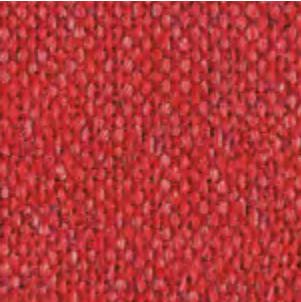
We have carefully curated our selection of textiles from some of the best suppliers on the market who operate to the highest environmental standards.



Main Line Flax

An inherently flame retardant fabric made from sustainable sources and woven into interesting solids and cross-colors inspired by the rich tones of rare jewels.

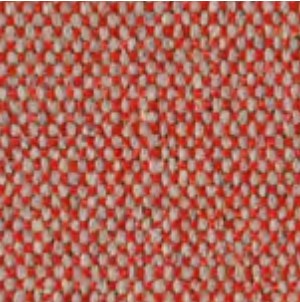
Manufacturer	Camira	Fastness to rubbing	Wet: 3, Dry: 4 (ISO 105 - X12)
Composition	70% virgin wool, 30% flax	Light Fastness	5 (ISO 105 - B02)
Environment	Certified to the EU Ecolabel Certified to Indoor Advantage™ "Gold" Rapidly renewable and compostable Made from wool and bast fiber	Flammability	EN 1021-1&2 Cigarette & Match BS 7176 Low Hazard BS 5852 Ignition Source 5 BS 7176 Medium Hazard NF D 60-013 ÖNORM B 3825 & A 3800-1 (58kg/m3 CMHR Foam) UNI 9175 Classe 1 IM BS 5867-2: Type B Curtains & Drapes
Martindale	Heavy duty / 10 year guarantee. Independently certified to ≥50.000 Martindale cycles		
Weight	437 g/m2 ±5%		



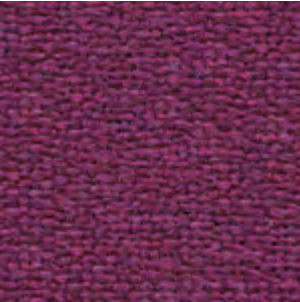
Aldgate
MLF01



Archway
MLF02



Barbican
MLF03



Euston
MLF04



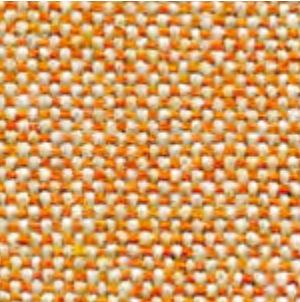
Holborn
MLF05



Kilburn
MLF06



Kensington
MLF07



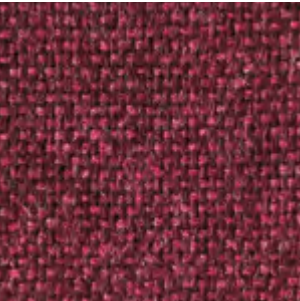
Lambeth
MLF08



Monument
MLF09



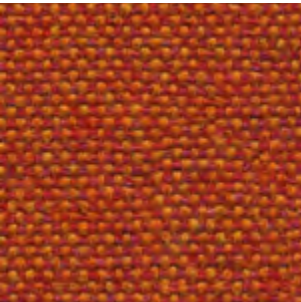
Newbury
MLF10



Wembley
MLF11



Morden
MLF12



Leyton
MLF13



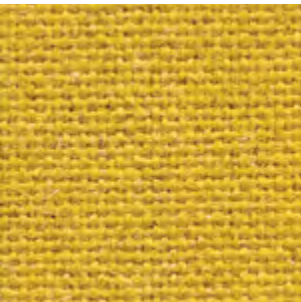
Parsons
MLF14



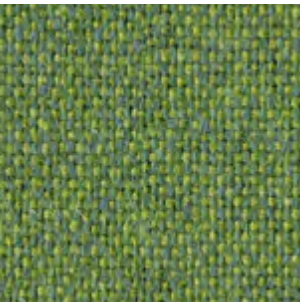
Stockwell
MLF15



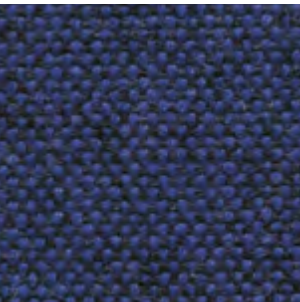
Temple
MLF16



Tooting
MLF17



Tufnell
MLF18



Victoria
MLF19



Upminster
MLF20



Waterloo
MLF21



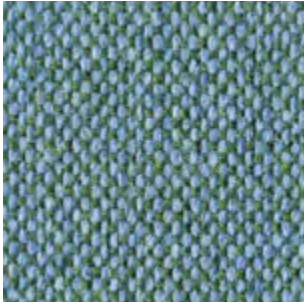
Westminster
MLF22



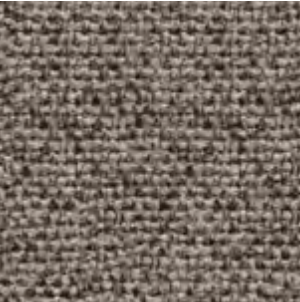
Bank
MLF23



Bayswater
MLF24



Bethnal
MLF25



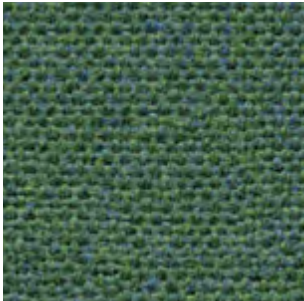
Camden
MLF26



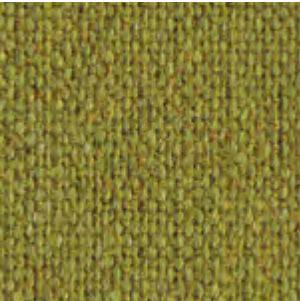
Charing
MLF27



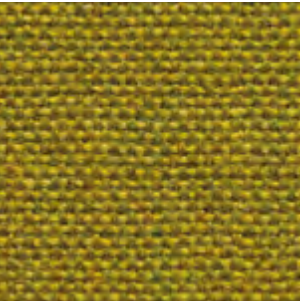
Edgware
MLF28



Farringdon
MLF29



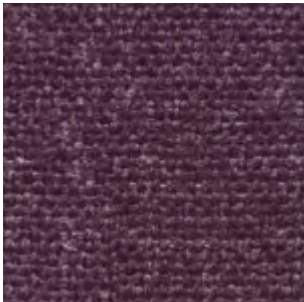
Finsbury
MLF30



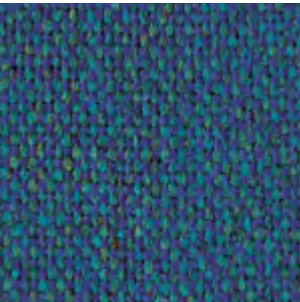
Goldhawk
MLF31



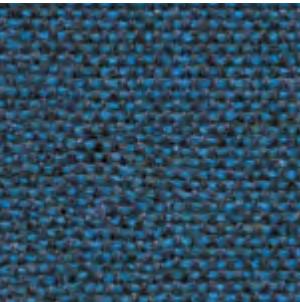
Greenford
MLF32



Highgate
MLF33



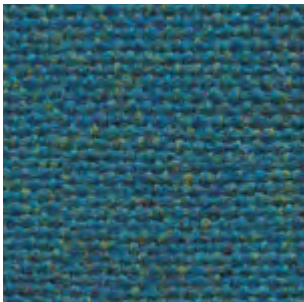
Pimlico
MLF34



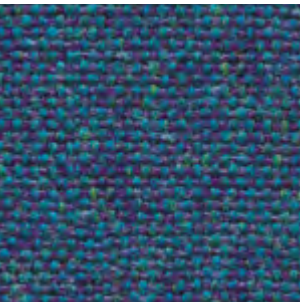
Brompton
MLF35



Tower
MLF36



Stanmore
MLF37



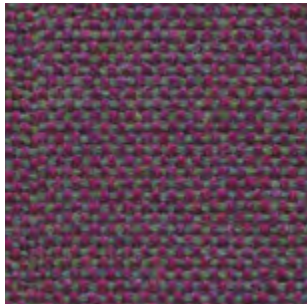
Russell
MLF38



Paddington
MLF39



Northfields
MLF40



Hillingdon
MLF41



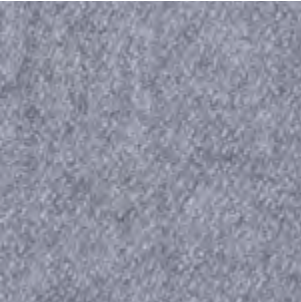
Pad lounge chair low grey steel oak Main Line Flax Holborn



Synergy

A soft handle wool blend fabric
featuring exquisite fiber dyed shades
and sumptuous piece dyed solids.

Manufacturer	Camira	Fastness to rubbing	Wet: 3, Dry: 4 (ISO 105 - X12)
Composition	95% virgin wool, 5% polyamide	Light Fastness	5 (ISO 105 - B02)
Environment	Certified to the EU Ecolabel Certified to Indoor Advantage™ "Gold"	Flammability	EN 1021 - 1&2 Cigarette & Match BS 7176 Low Hazard NF D 60-013 ÖNORM B 3825 & A 3800-1 (58 kg/m3 CMHR Foam) UNI 9175 Classe 1 IM EN 13501-1 Adhered Class D, s1, d0 EN 13501-1 Un-adhered Class E, s2, d0 BS 5852 Ignition Source 5 when FR treated BS 7176 Medium Hazard when FR treated EN 13501-1 Adhered Class B, s1, d0 when FR treated EN 13501-1 Un-adhered Class D, s2, d0 when FR treated BS 5867-2: Type B Curtains & Drapes when FR treated
Abrasion resistance	Heavy duty / 10 year guarantee. Independently certified to ≥100.000 Martindale cycles		
Weight	400 g/m2 ±5%		



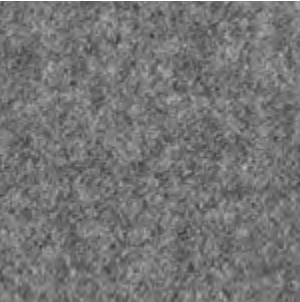
Venture
LDS05



Fate
LDS07



Serendipity
LDS08



Partner
LDS16



Mix
LDS17



Loop
LDS18



Chain
LDS19



Level
LDS20



Team
LDS21



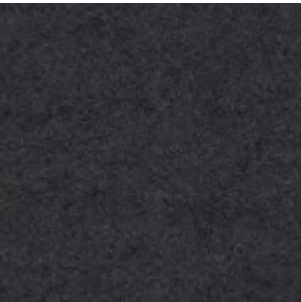
Frame
LDS22



Bracket
LDS23



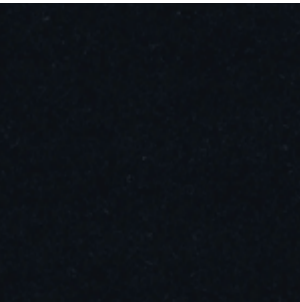
Bond
LDS24



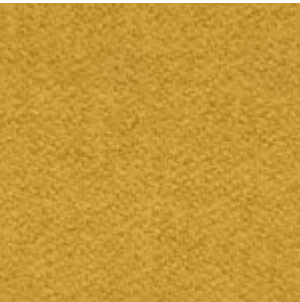
Compound
LDS25



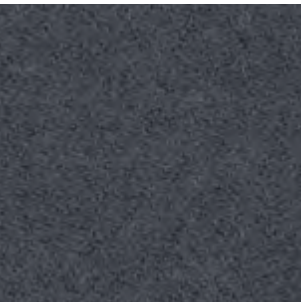
Bridge
LDS26



Seek
LDS27



Lateral
LDS28



Hook
LDS29



Pair
LDS31



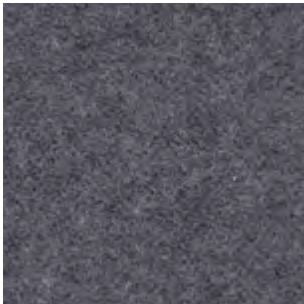
Affix
LDS32



Tag
LDS33



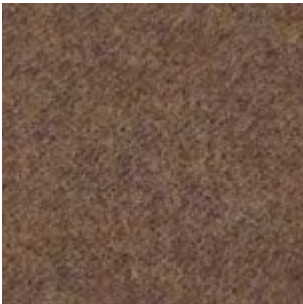
Wed
LDS34



Chemistry
LDS35



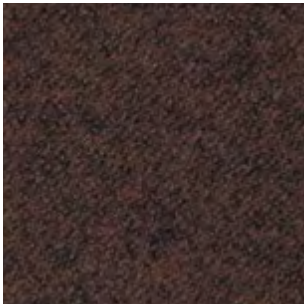
Medley
LDS36



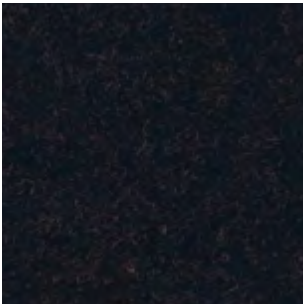
Linea
LDS37



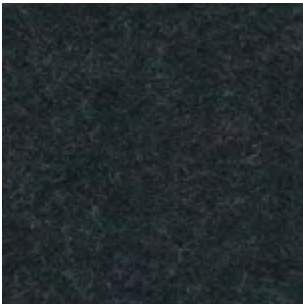
Unity
LDS38



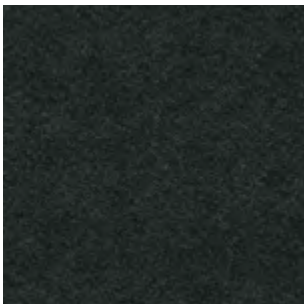
Collective
LDS39



Co-operate
LDS40



Couple
LDS41



Intertwine
LDS42



Marry
LDS43



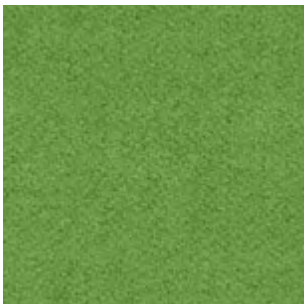
Relate
LDS44



Summon
LDS45



Gather
LDS46



Integrate
LDS47



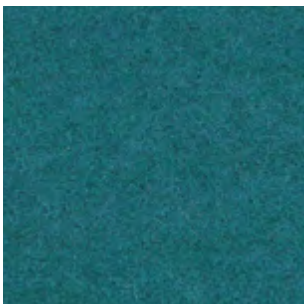
Interfuse
LDS48



Append
LDS49



League
LDS50



Kindness
LDS51



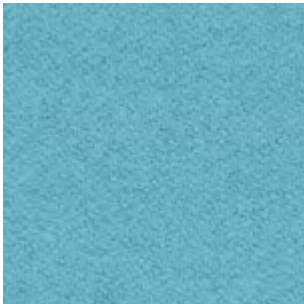
Comply
LDS52



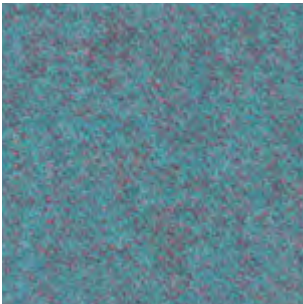
Pact
LDS53



Regard
LDS54



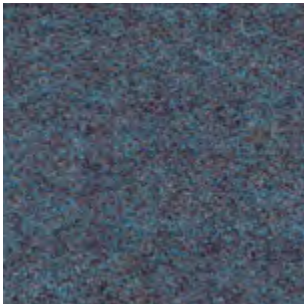
Support
LDS55



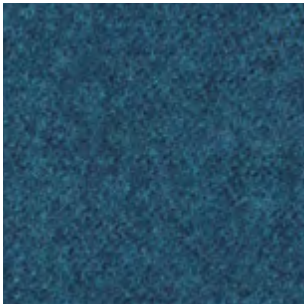
Kinship
LDS56



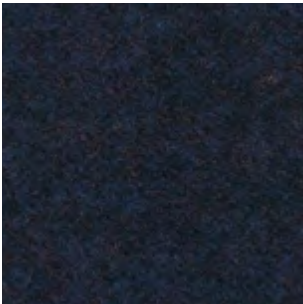
Engage
LDS57



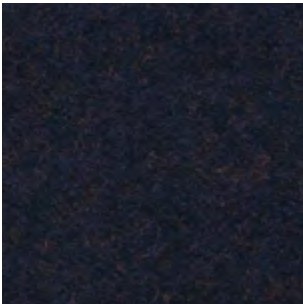
Family
LDS58



Group
LDS59



Accord
LDS60



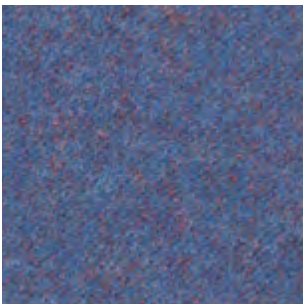
Assemble
LDS61



Alike
LDS62



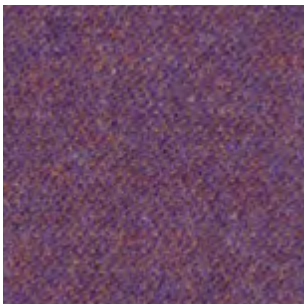
Guild
LDS63



Order
LDS64



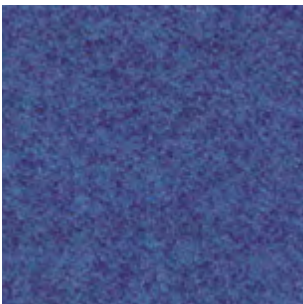
Huddle
LDS65



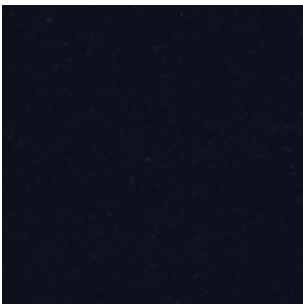
Fellowship
LDS66



Warmth
LDS67



Collaborate
LDS68



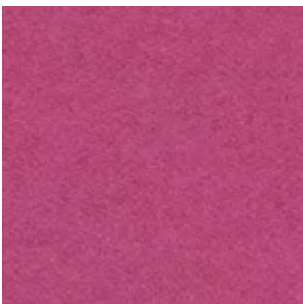
Sync
LDS69



Together
LDS70



Open
LDS71



Compose
LDS72



Work
LDS73



Left:
Sum modular sofa black aluminum Synergy Affinity

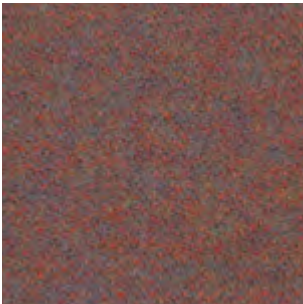
Below:
Studio chair full upholstery Synergy Guild



Affinity
LDS74



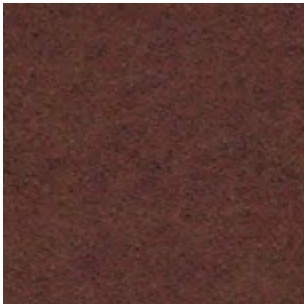
Contribution
LDS75



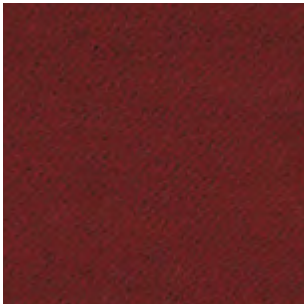
Success
LDS76



Combo
LDS77



Cordial
LDS78



Amiable
LDS79



Apt
LDS80



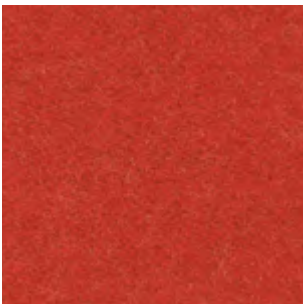
Similar
LDS81



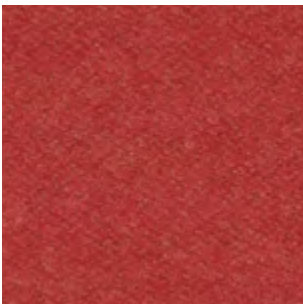
Likeness
LDS82



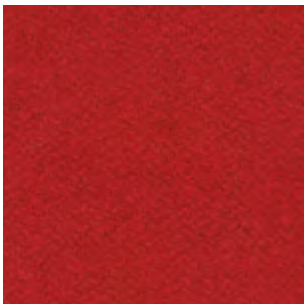
Congregate
LDS83



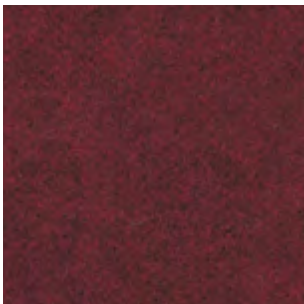
Mutual
LDS84



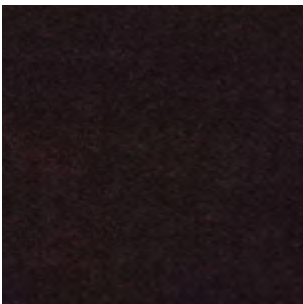
Share
LDS85



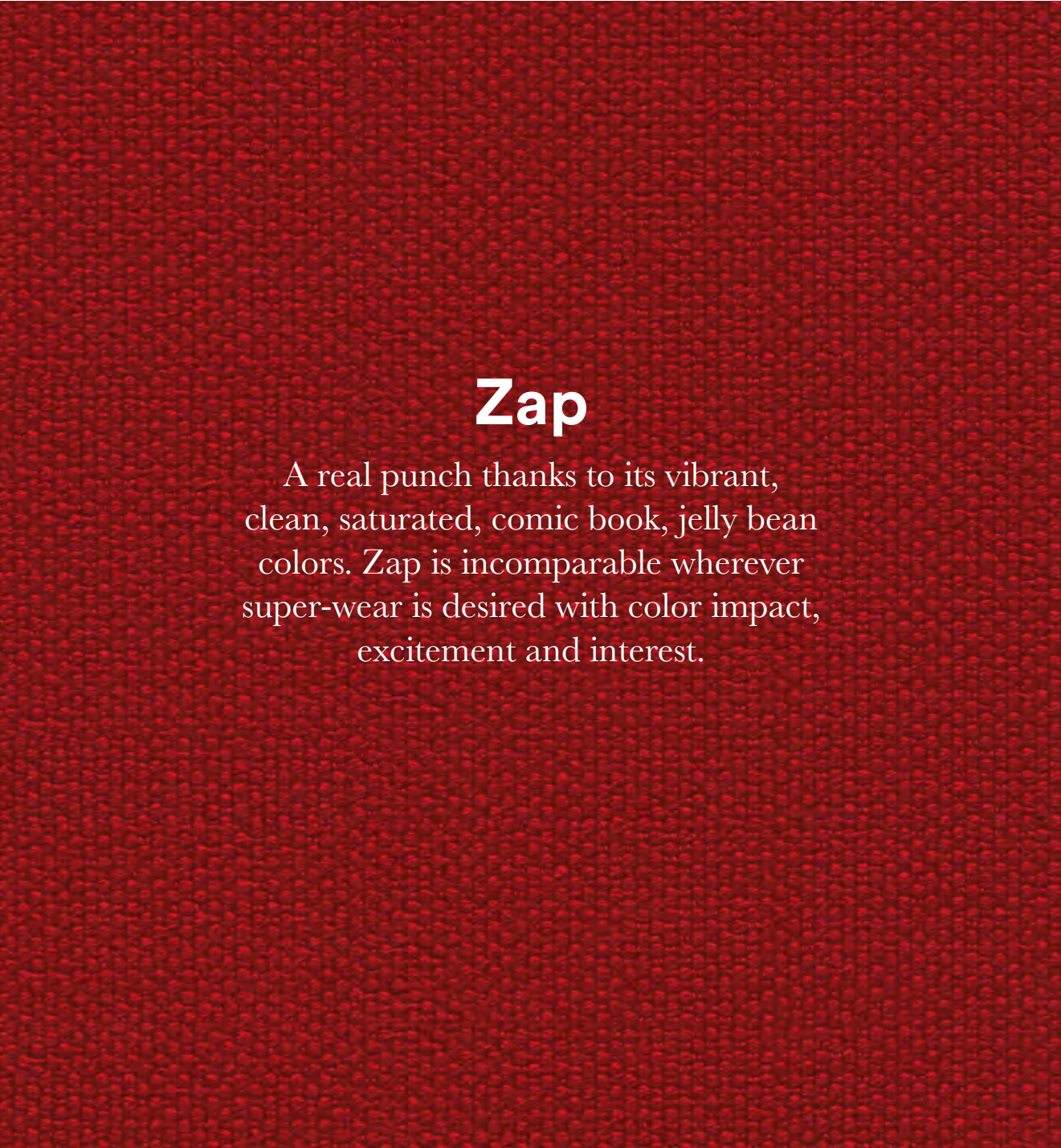
Global
LDS86



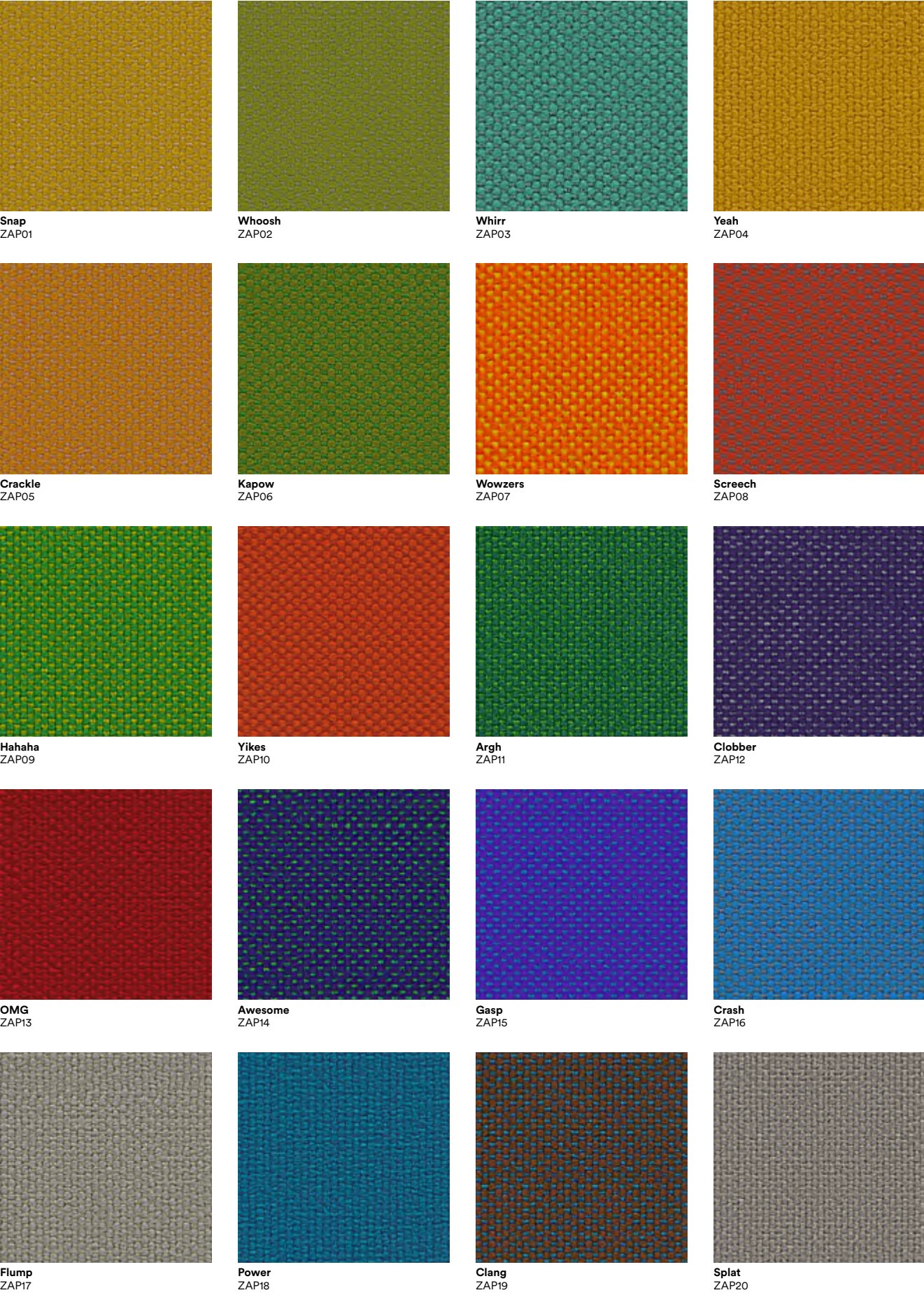
Values
LDS87



Process
LDS88

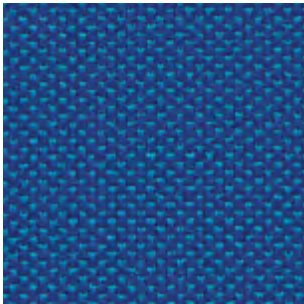


Manufacturer	Camira	Fastness to rubbing	Wet: 4, Dry: 4 (ISO 105 - X12)
Composition	83% virgin wool, 17% polyamide	Light Fastness	Standard: 5 (ISO 105 - B02) ZAP07: 4/5 (ISO 105 - B02) ZAP10: 4/5 (ISO 105 - B02)
Environment	Certified to Indoor Advantage™ "Gold"	Flammability	EN 1021 - 1&2 Cigarette & Match BS 7176 Low Hazard NF D 60-013 BS 5852 Ignition Source 5 when FR Treated BS 7176 Medium Hazard when FR Treated
Abrasion resistance	Heavy duty / 10 year guarantee. Independently certified to ≥100.000 Martindale cycles		
Weight	470 g/m2 ±5%		

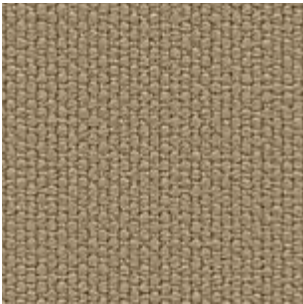




Boing
ZAP21



Zoom
ZAP22



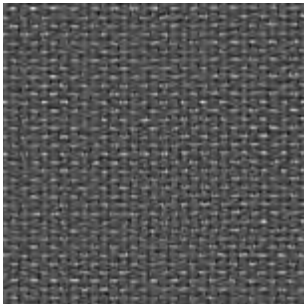
Wham
ZAP23



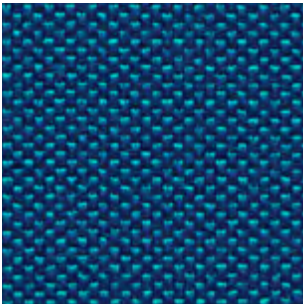
Zoink
ZAP24



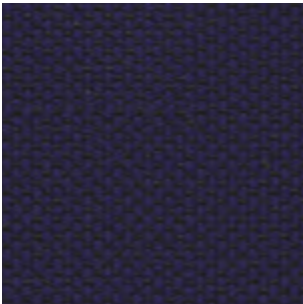
Bonza
ZAP25



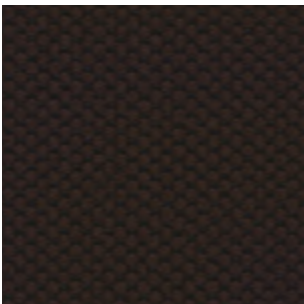
Puff
ZAP26



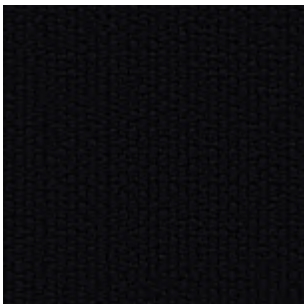
Splash
ZAP27



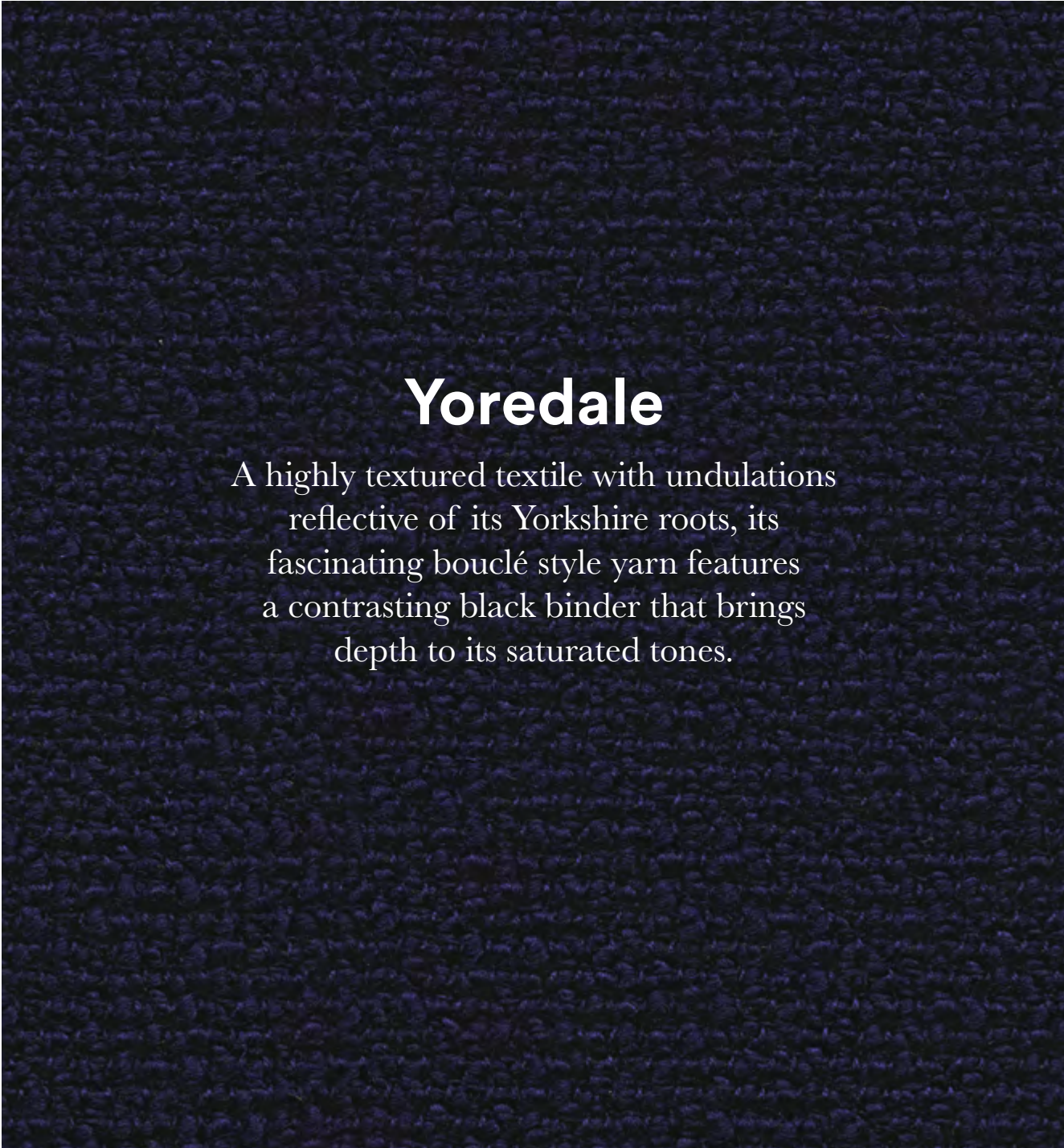
Whomp
ZAP28



Thud
ZAP29



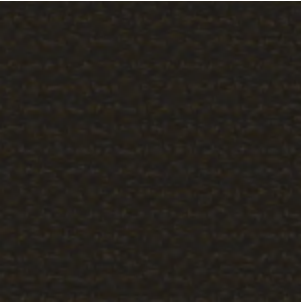
Cool
ZAP30



Yoredale

A highly textured textile with undulations reflective of its Yorkshire roots, its fascinating bouclé style yarn features a contrasting black binder that brings depth to its saturated tones.

Manufacturer	Camira	Fastness to rubbing	Wet: 4, Dry: 4 (ISO 105 - X12)
Composition	95% wool, 3% polyester, 2% polyamide	Light Fastness	5 (ISO 105 - B02)
Environment	Certified to Indoor Advantage™ "Gold" Nonmetallic dyestuffs	Flammability	EN 1021 - 1&2 Cigarette & Match BS 7176 Low Hazard ÖNORM B 3825 & A 3800-1 (58kg/m3 CMHR Foam) UNI 9175 Classe 1 IM BS 5852 Ignition Source 5 when FR treated BS 7176 Medium Hazard when FR treated
Abrasion resistance	Heavy duty / 10 year guarantee. Independently certified to ≥50.000 Martindale cycles		
Weight	700 g/m2 ±5%		



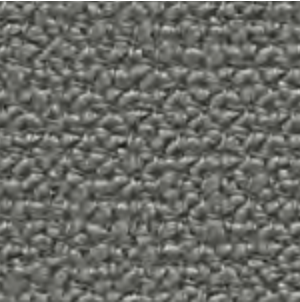
Buckden
UDA01



Kidstone
UDA02



Askrigg
UDA03



Hardraw
UDA04



Simonstone
UDA05



Thoralby
UDA06



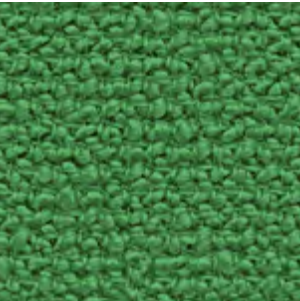
Carperby
UDA07



Gayle
UDA08



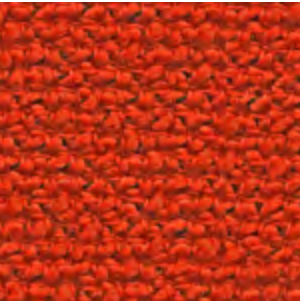
Thornton
UDA09



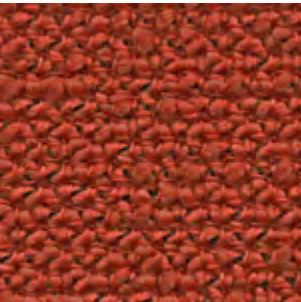
Cray
UDA10



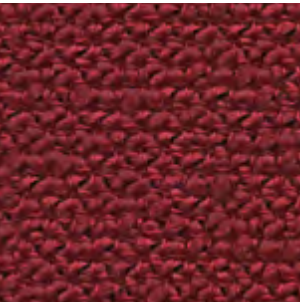
Fossdale
UDA11



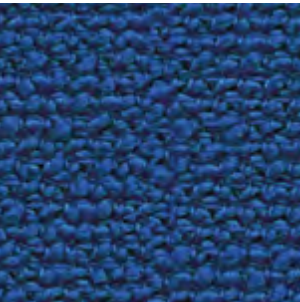
Woodale
UDA12



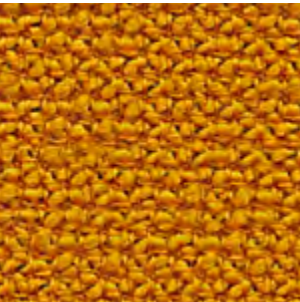
Walden
UDA13



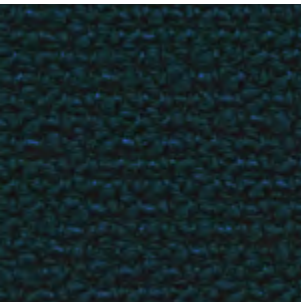
Sedbusk
UDA14



Litton
UDA15



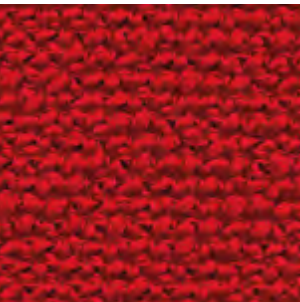
Nidd
UDA16



Ribble
UDA17



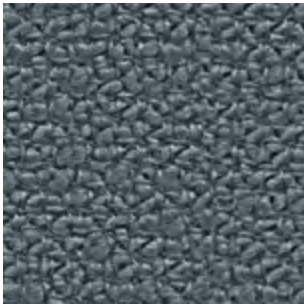
Wharfe
UDA18



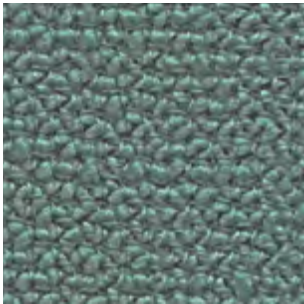
Ripley
UDA19



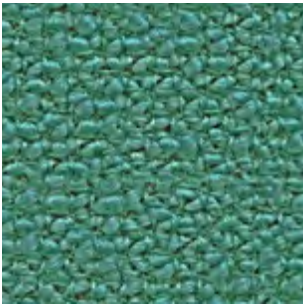
Darley
UDA20



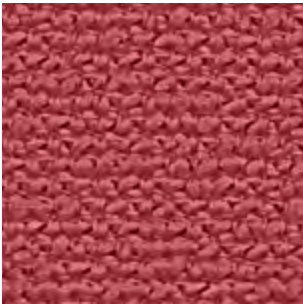
Dacre
UDA21



Burnsall
UDA22



Cracoe
UDA23



Woden
UDA24



Leyburn
UDA25



Aquarius

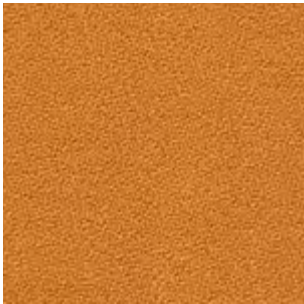
A versatile crêpe weave fabric that is suitable for task chairs and lounge seating. Made from 100% natural wool, which is not only rapidly renewable but also fully biodegradable.

Manufacturer	Camira	Fastness to rubbing	Wet: 4, Dry: 4 (ISO 105 - X12)
Composition	100% virgin wool	Light Fastness	5 (ISO 105 - B02)
Environment	Certified to Indoor Advantage™ "Gold" Rapidly renewable and compostable Nonmetallic dyestuffs	Flammability	EN 1021-1&2 Cigarette & Match BS 7176 Low Hazard UNI 9175 Classe 1 IM BS 5852 Ignition Source 5 when FR treated BS 7176 Medium Hazard when FR treated BS 5867-2 Type B Curtains & Drapes when FR treated
Abrasion resistance	Heavy duty / 10 year guarantee. Independently certified to ≥50.000 Martindale cycles		
Weight	370 g/m2 ±5%		

 Heron JA001	 Pitch JA002	 Mariner JA016	 Rhino JA022
 Porcelain JA024	 Jezebel JA027	 Paderborn JA047	 Biscay JA059
 Vermillion JA062	 Amber JA068	 Swart JA069	 Poison JA084
 Mushroom JA125	 Purple JA157	 Smurf JA159	 Tambourine JA183
 Manta JA194	 Courgette JA201	 Ceres JA409	 Aristotle JA416



Cherry
JA419



Zippy
JA426



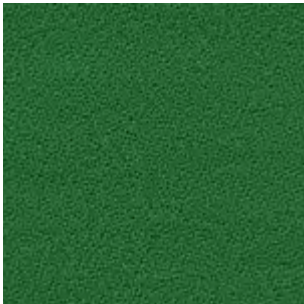
Circus
JA428



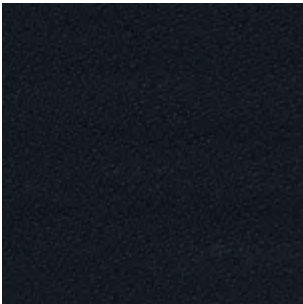
Vico
JA435



Tombola
JA442



Chomsky
JA443



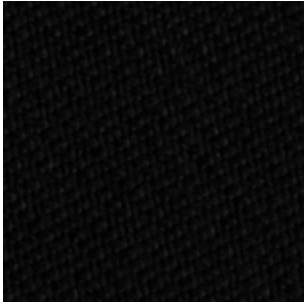
Spinoza
JA448



Oceanic

A strikingly contemporary fabric with an intricate twill weave. Oceanic is made entirely from recycled plastic removed from the sea and shores.

Manufacturer	Camira	Fastness to rubbing	Wet: 4, Dry: 4 (ISO 105 - X12)
Composition	100% post-consumer recycled polyester, including 50% SEAQUAL yarn.	Light Fastness	5 (ISO 105 - B02) OOC16: 4/5 (ISO 105 - B02)
Environment	Certified to OEKO-TEX® Standard 100 Certified to Indoor Advantage™ Gold Made from 100% post-consumer recycled polyester Nonmetallic dyestuffs	Flammability	EN 1021 - 1 (cigarette) EN 1021 - 2 (match) BS 7176 Low Hazard Note: Flammability performance is dependent on components used. Our certificates show what substrates have been used in our tests. For composite tests customers must ensure their complete furniture meets the necessary standards.
Abrasion resistance	Heavy duty / 10 year guarantee Independently certified to ≥100.000 Martindale cycles		
Weight	497g/m2 ±5% (696g/lin.m ±5%)		



Flotsam
OOC01



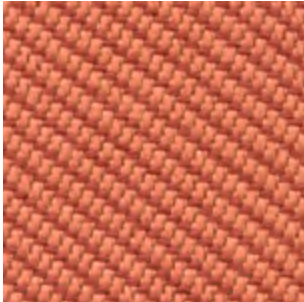
Jetsam
OOC02



Coast
OOC03



Sea
OOC04



Coral
OOC05



Atoll
OOC06



Barrier
OOC07



Bay
OOC08



Shore
OOC09



Abyss
OOC10



Neptune
OOC11



Aquatic
OOC12



Paddle
OOC13



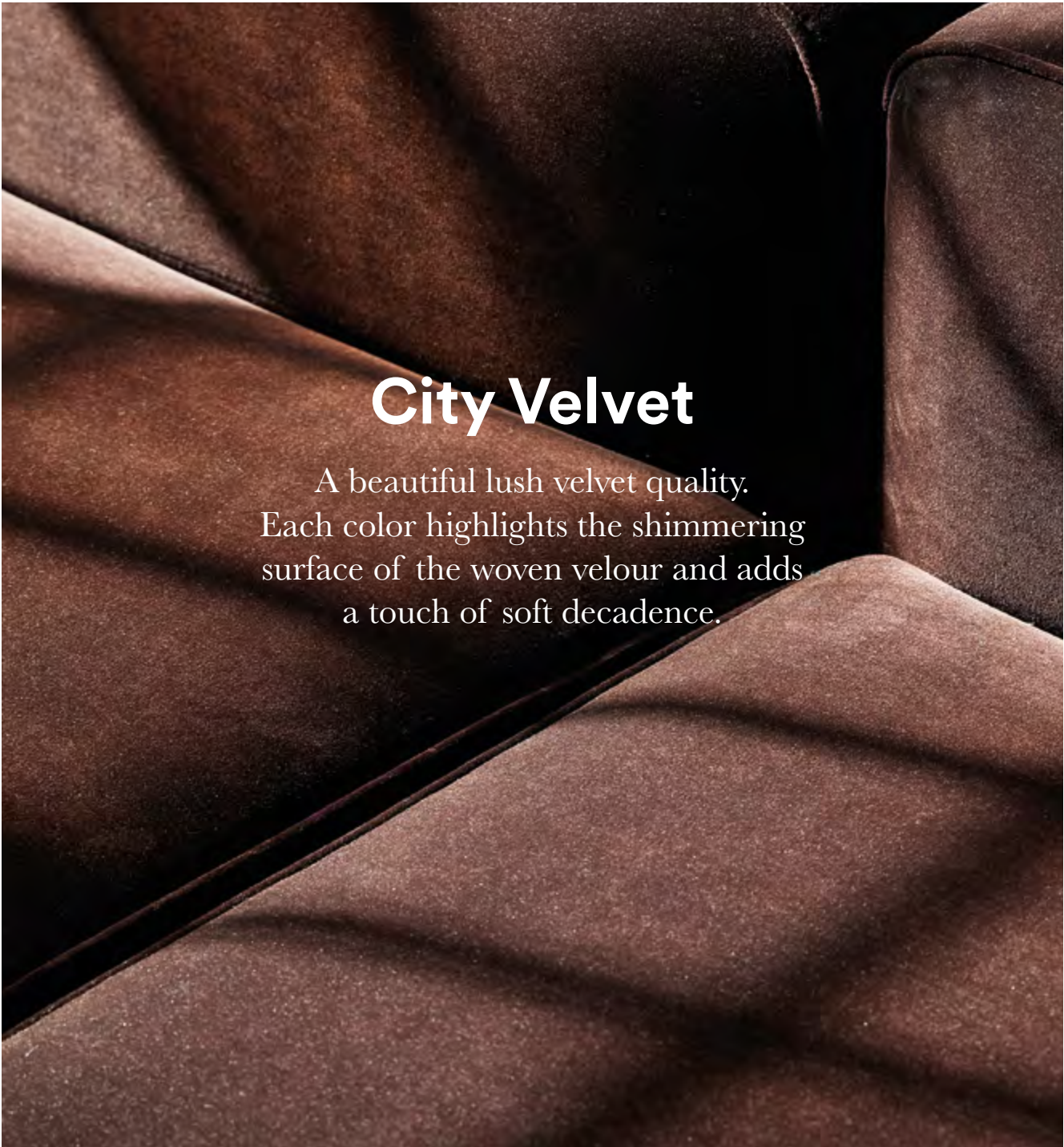
Riptide
OOC14



Gulf
OOC15



Seafarer
OOC16



City Velvet

A beautiful lush velvet quality.
Each color highlights the shimmering
surface of the woven velour and adds
a touch of soft decadence.

Manufacturer	JAB
Composition	Pile: 100% polyester Groundmaterial: 100% polyester
Abrasion resistance	100.000 Martindale
Weight	440 g/m2
Light Fastness	3-5



CA7832/010

CA7832/011

CA7832/012

CA7832/013



CA7832/014

CA7832/015

CA7832/020

CA7832/021

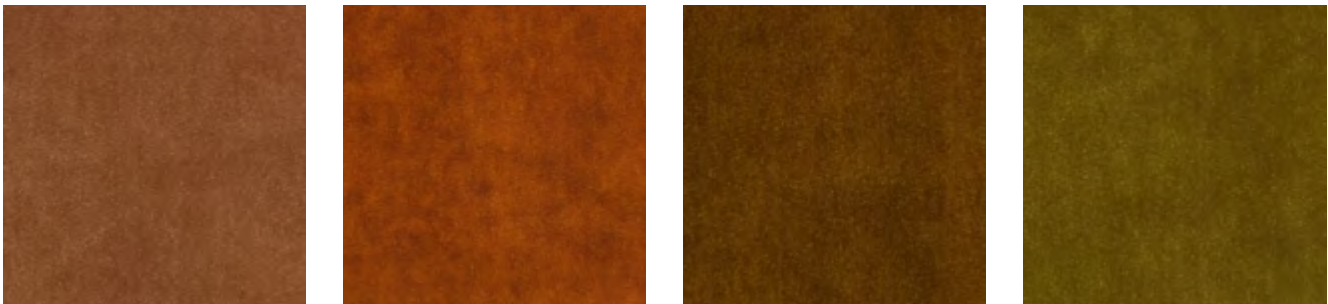


CA7832/022

CA7832/023

CA7832/024

CA7832/025

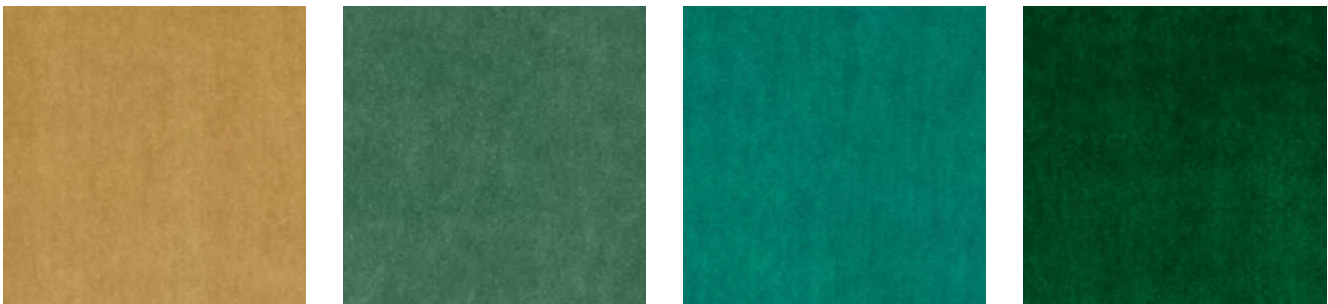


CA7832/026

CA7832/027

CA7832/030

CA7832/031



CA7832/032

CA7832/033

CA7832/034

CA7832/035



CA7832/036



CA7832/037



CA7832/038



CA7832/039



CA7832/040



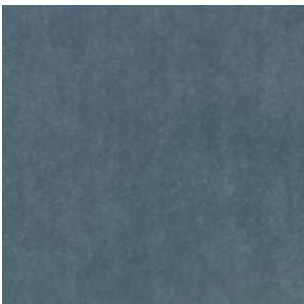
CA7832/041



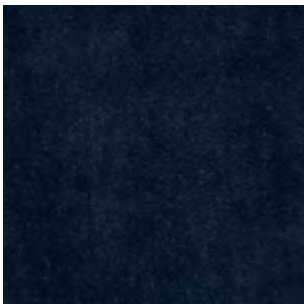
CA7832/042



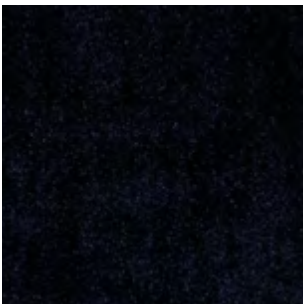
CA7832/043



CA7832/050



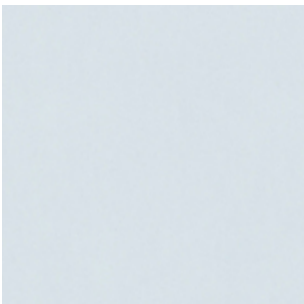
CA7832/051



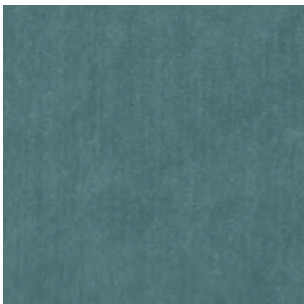
CA7832/052



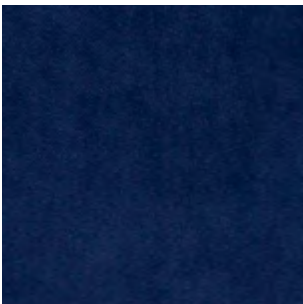
CA7832/053



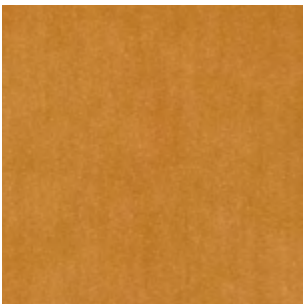
CA7832/055



CA7832/056



CA7832/058



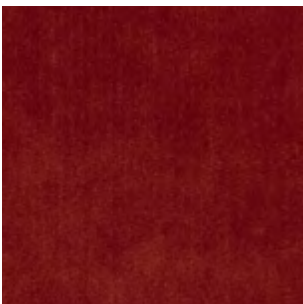
CA7832/060



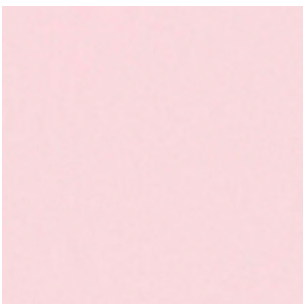
CA7832/061



CA7832/062



CA7832/063



CA7832/064



CA7832/065



CA7832/066



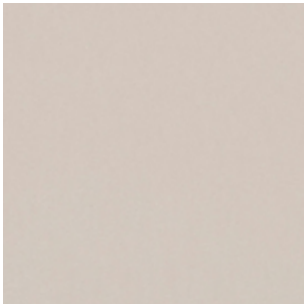
CA7832/067



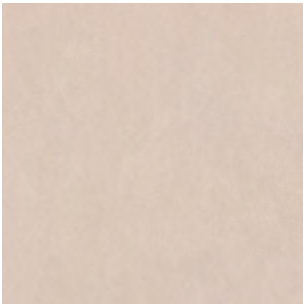
CA7832/068



CA7832/069



CA7832/070



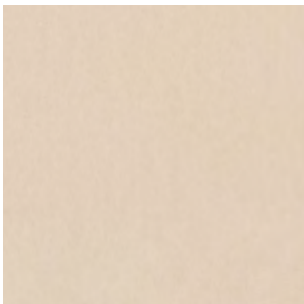
CA7832/071



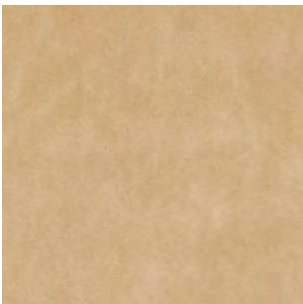
CA7832/072



CA7832/073



CA7832/074



CA7832/075



CA7832/076



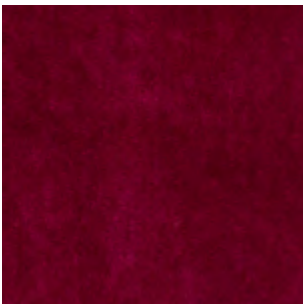
CA7832/077



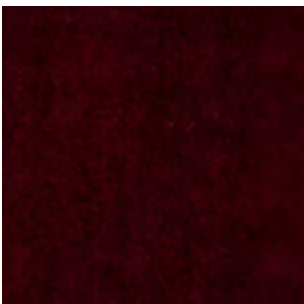
CA7832/078



CA7832/079



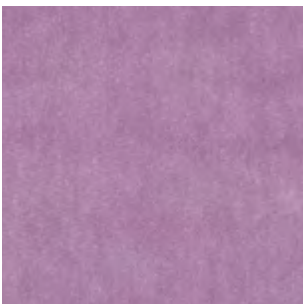
CA7832/080



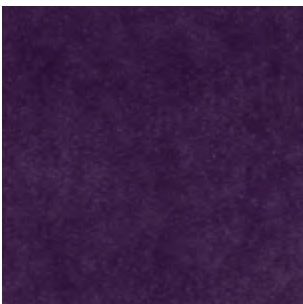
CA7832/081



CA7832/082



CA7832/083



CA7832/084



Left:
Circus pouf small and large in City Velvet

Below:
Form chair oak full upholstery City Velvet – CA7832/074



CA7832/085



CA7832/086



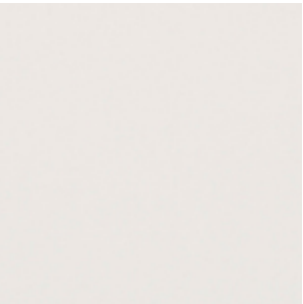
CA7832/087



CA7832/088



CA7832/089



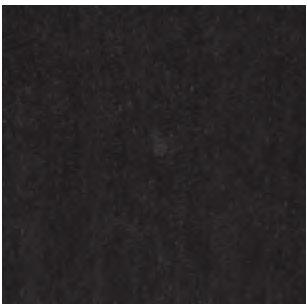
CA7832/090



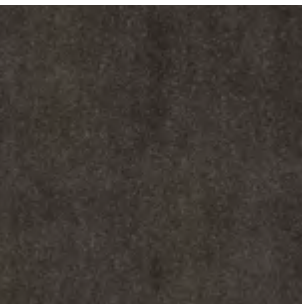
CA7832/091



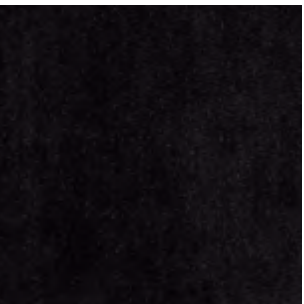
CA7832/092



CA7832/093



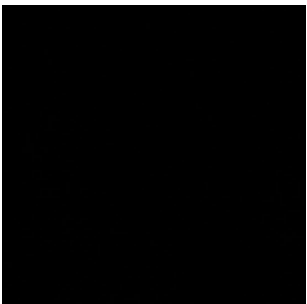
CA7832/094



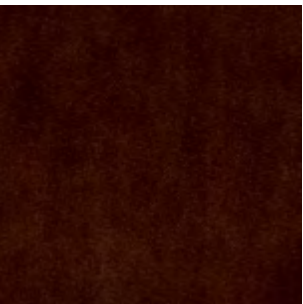
CA7832/095



CA7832/096



CA7832/099



CA7832/126



CA7832/130



CA7832/160



CA7832/161



CA7832/162



CA7832/165



CA7832/170



CA7832/180



CA7832/181



CA7832/184



CA7832/186



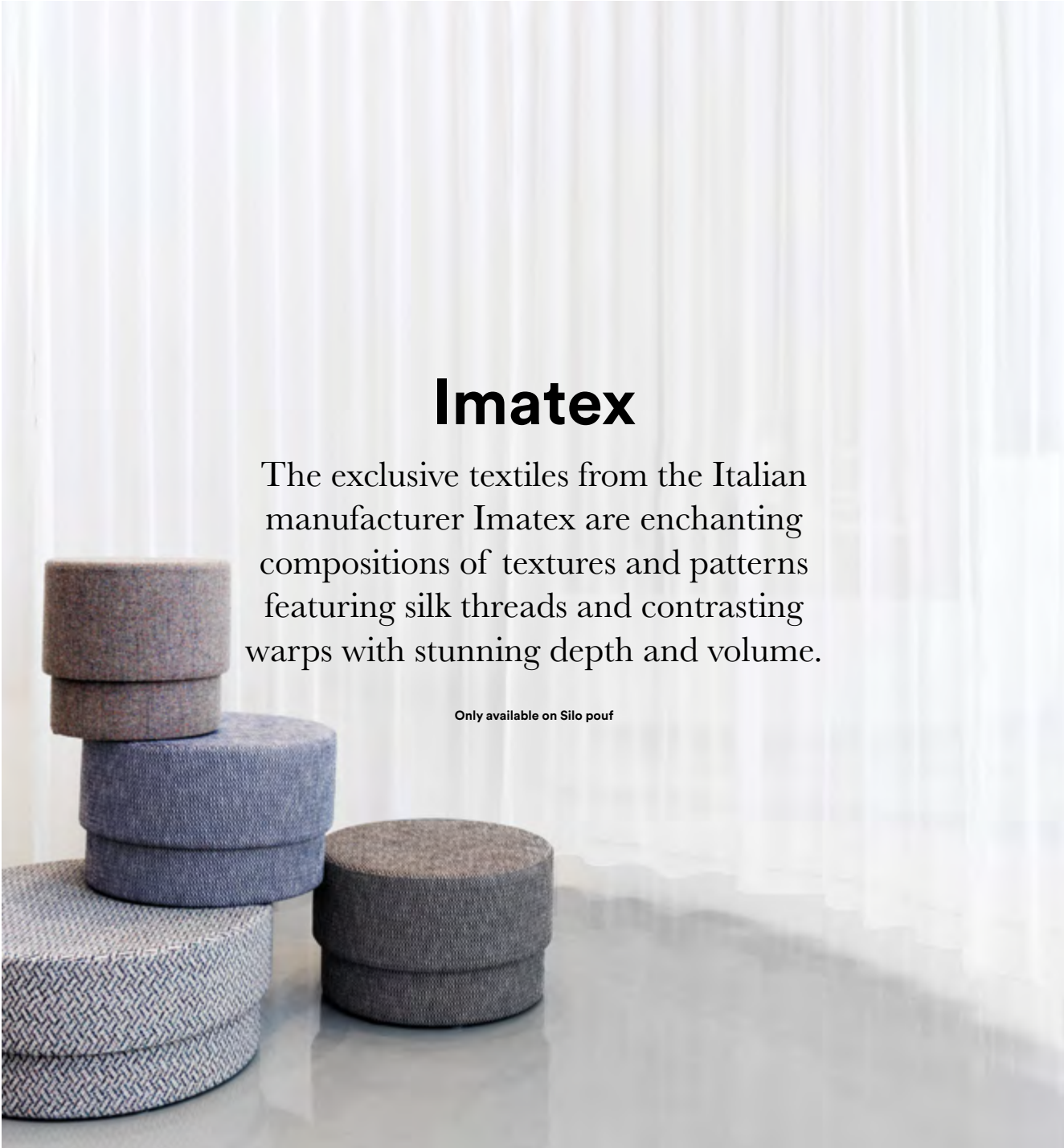
CA7832/234



CA7832/263



Rope modular sofa City Velvet CA7832/011



Imatex

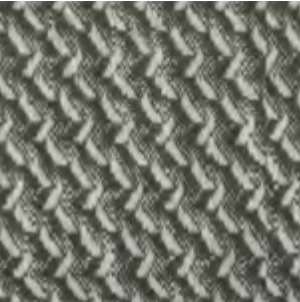
The exclusive textiles from the Italian manufacturer Imatex are enchanting compositions of textures and patterns featuring silk threads and contrasting warps with stunning depth and volume.

Only available on Silo pouf

Manufacturer	Imatex	Abrasion resistance	Albagia: 30.000 martindale Bolgheri: 30.000 martindale Wynwood/Z: 25.000 martindale
Composition	Albagia: 75% cotton, 17% viscose, 8% linnen Bolgheri: 35% viscose, 26% wool, 17% polyamide, 15% silk, 7% linnen Wynwood/Z: 36% acylic, 27% viscose, 11% polyester, 9% cotton, 8% linnen, 6% wool, 2% alpaca, 1% silk	Color fastness to rubbing	Wet:4, Dry:4/5
		Color fastness to light	5
Weight	Albagia: 540/550 g/m2 Bolgheri: 960/970 g/m2 Wynwood/Z: 750/760 g/m2	Pilling	3/4
		Flammability	Bolgheri: BS 5852 Source 0: PASS BS 5852 Source 1: PASS CAL 117: PASS



Albagia 15/330
201



Albagia 15/330
214



Albagia 15/330
288



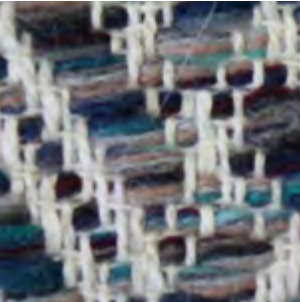
Bolgheri 96/5461
LAN7



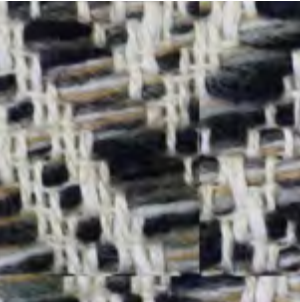
Bolgheri 96/5461
LNE4



Bolgheri 96/5461
LNE8



Wynwood/Z 96Z/5743
8



Wynwood/Z 96Z/5743
10

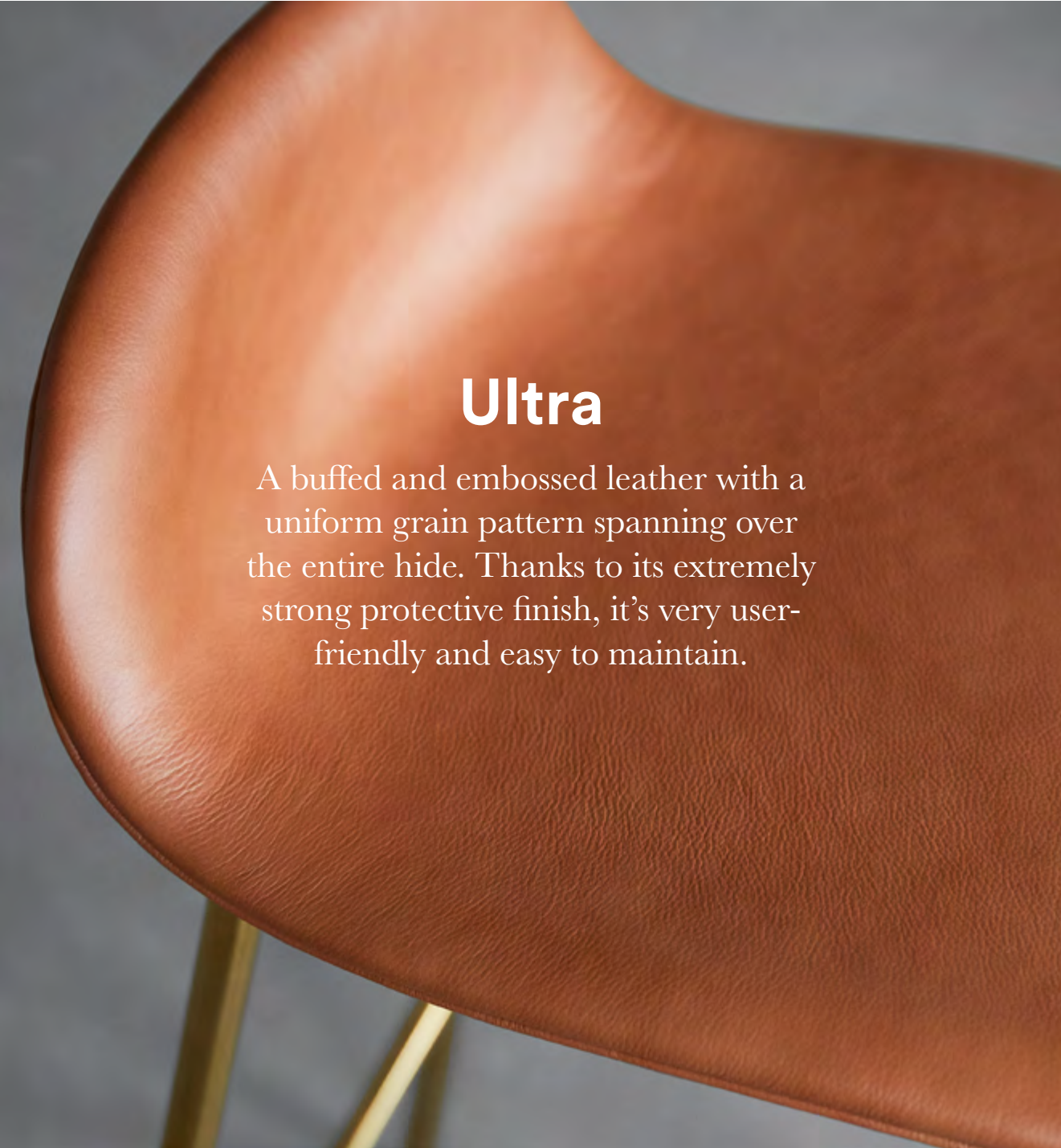


Wynwood/Z 96Z/5743
13

A modern leather armchair with a black metal frame, set against a background of white curtains. The chair is upholstered in a rich, brown leather with visible stitching. The background consists of white, vertically pleated curtains that allow soft, natural light to filter through, creating a bright and airy atmosphere. The chair's design is minimalist and elegant, with a high back and a wide, comfortable seat.

Leathers

We offer high-quality top grain natural leather from Sørensen Leather for our upholstery. We work with three different styles, each with specific attributes that accommodate diverse needs.



Ultra

A buffed and embossed leather with a uniform grain pattern spanning over the entire hide. Thanks to its extremely strong protective finish, it's very user-friendly and easy to maintain.

Manufacturer	Sørensen Leather	Color fastness to rubbing	Wet 250 rubs: 4, Dry 500 rubs: 4-5, Perspiration 80 rubs: 4 (DIN EN ISO 11640)
Thickness	0.9 – 1.1 mm	Color fastness to light	6-7 (DIN EN ISO 105-B02)
Origin	Non-European	Flammability test	CA TB 117-2013 – Non-ignition
Finish	Extremely strong surface protection	Cigarette + match	BS EN 1021-1 and 2 – Non-ignition
Tannage	Chrome	Environment	PCP: According to EU Council Directive 76/769/EEC AZO dyes: According to EU Council Directive 76/769/EEC Chrome VI: Our leather does not contain chrome VI REACH: According to European Community Regulation on chemicals and their safe use (EC 1907/2006)
Dye	Water-based aniline dye		

 Camel 41571	 Honey 41572	 Navy 41573	 Brandy 41574
 Lava 41575	 Altweiss 41576	 Sun 41577	 Poppy 41578
 Brick 41579	 Anthrazit 41580	 Eggshell 41581	 Sand 41582
 Marble 41583	 Earth 41584	 Grey 41585	 Safari 41586
 Orange 41587	 Brown 41588	 Chocolate 41589	 Black Brown 41590

Right:
Era lounge chair high swivel aluminum Ultra Black

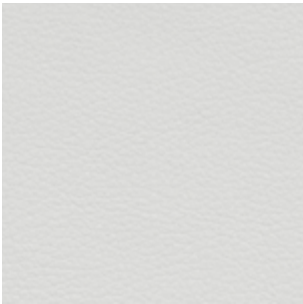
Below:
Hyg swivel upholstery 5W gaslift aluminum Ultra Brandy



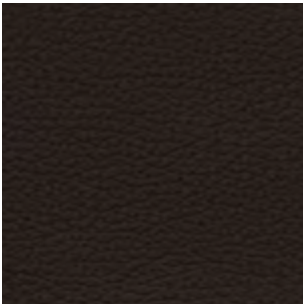
Apple
41592



Purple
41593



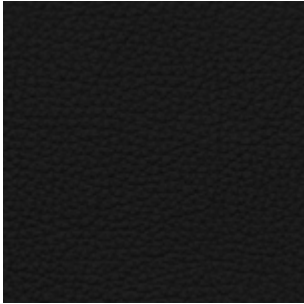
White
41594



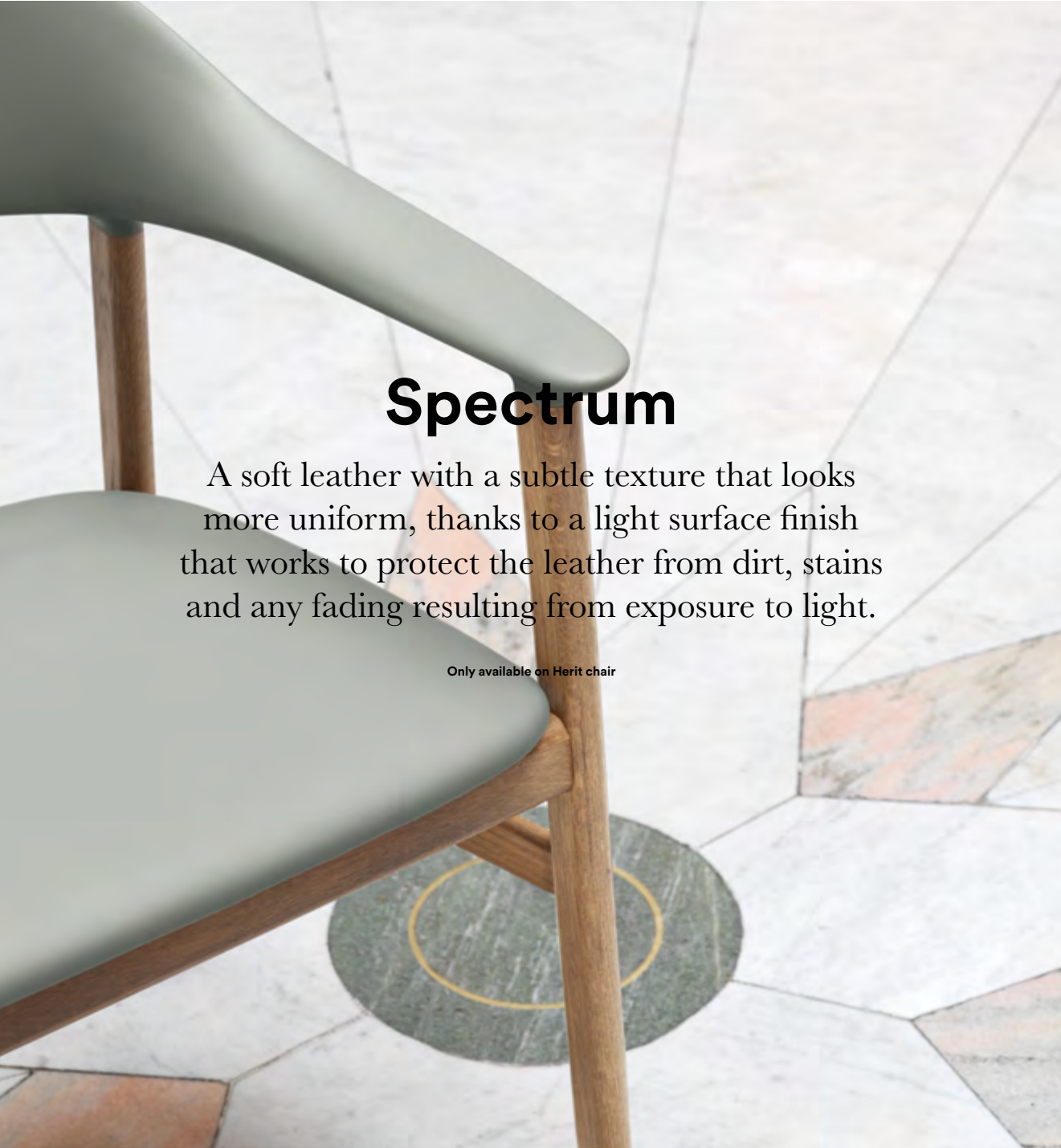
Coffee
41597



Cognac
41598



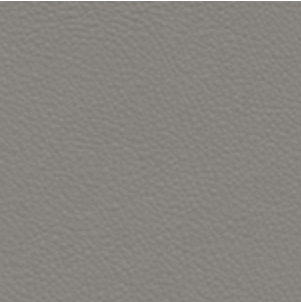
Black
41599



Spectrum

A soft leather with a subtle texture that looks more uniform, thanks to a light surface finish that works to protect the leather from dirt, stains and any fading resulting from exposure to light.

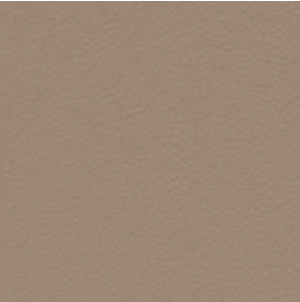
Only available on Herit chair



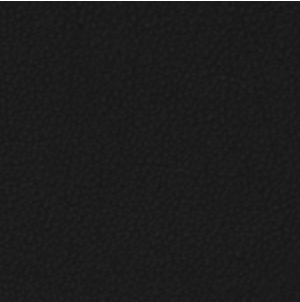
Cloud
30079



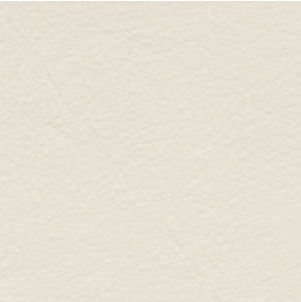
Agave
30098



Marble
30105

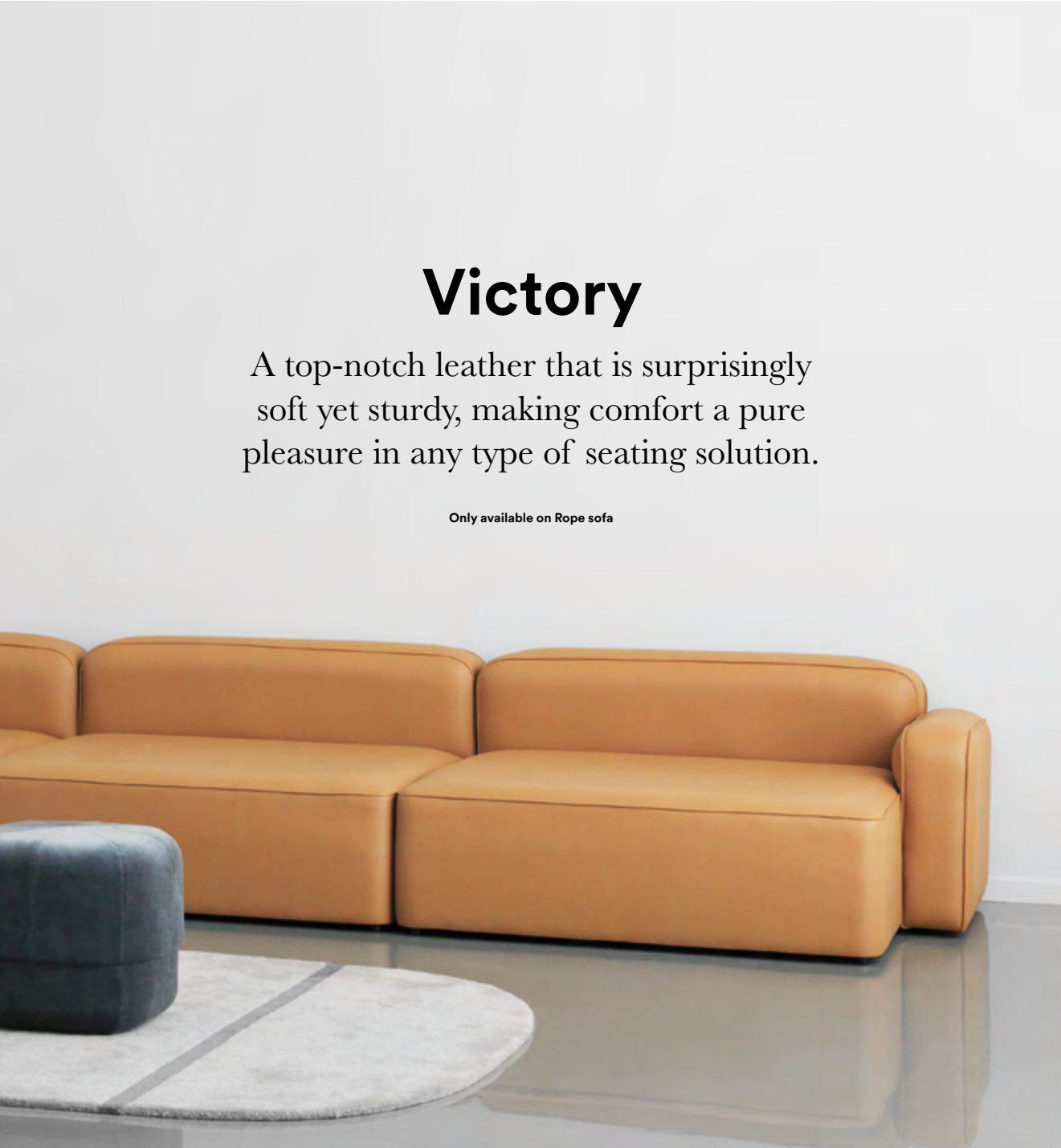


Black
30114



White
30140

Manufacturer	Sørensen Leather	Color fastness to rubbing	Wet 250 rubs: 4-5, Dry 500 rubs: 4, Perspiration 80 rubs: 4 (DIN EN ISO 11640)
Thickness	1.0 – 1.2 mm	Color fastness to light	6 (DIN EN ISO 105-B02)
Origin	European rawhide, typically from Italy, Germany, Austria, Switzerland and Scandinavia	Flammability test	CA TB 117-2013 – Non-ignition
Finish	Light surface protection	Cigarette + match	BS EN 1021-1 and 2 – Non-ignition
Tannage	Chrome	Environment	PCP: According to EU Council Directive 76/769/EEC AZO dyes: According to EU Council Directive 76/769/EEC Chrome VI: Our leather does not contain chrome VI REACH: According to European Community Regulation on chemicals and their safe use (EC 1907/2006)
Dye	Water-based aniline dye		



Victory

A top-notch leather that is surprisingly soft yet sturdy, making comfort a pure pleasure in any type of seating solution.

Only available on Rope sofa

Manufacturer	Sørensen Leather	Color fastness to rubbing	Wet 250 rubs: 4-5, Dry 500 rubs: 4-5, Perspiration 80 rubs: 4 (DIN EN ISO 11640)
Thickness	1.3 – 1.5 mm	Color fastness to light	6 (DIN EN ISO 105-B02)
Origin	European rawhide, typically from Italy, Germany, Austria, Switzerland and Scandinavia	Flammability test	CA TB 117-2013 – Non-ignition
Finish	Extremely strong surface protection	Cigarette + match	BS EN 1021-1 and 2 – Non-ignition
Tannage	Chrome	Environment	PCP: According to EU Council Directive 76/769/EEC AZO dyes: According to EU Council Directive 76/769/EEC Chrome VI: Our leather does not contain chrome VI REACH: According to European Community Regulation on chemicals and their safe use (EC 1907/2006)
Dye	Water-based aniline dye		



Wood

We work with many types of wood depending on the design and purpose, but always with a focus on creating high-quality furniture. All wood used in our furniture production comes from sustainable forestry.

Environmental profile:

All wood follows the EUTR (EU Timber Regulation), which ensures the legal sourcing of the wood. The majority of the wood we use comes from FSC-certified forestry. Our varnish is water based. Plywood and MDF used in our furniture meet the strict US requirements for Formaldehyde emission: CARB ATCM Phase II



Oak

My Chair – shell & legs (lacquered oak veneer)
Just chair – shell & legs (lacquered oak veneer)
Studio chair – shell (lacquered oak veneer)
Ace chair – legs (lacquered oak)
Form chair – legs (lacquered oak)
Herit chair – legs (lacquered oak)
Pad lounge chair - shell (lacquered oak veneer)
Era – legs (lacquered oak veneer)
Form cafe table – tabletop (lacquered oak veneer)
Slice table – tabletop (lacquered oak veneer)



Walnut

My Chair – shell (& legs (lacquered walnut veneer)
Form chair – legs (lacquered walnut veneer)
Era - legs (lacquered walnut veneer)



Ash

Just chair – shell & legs (lacquered ash veneer)



Birch

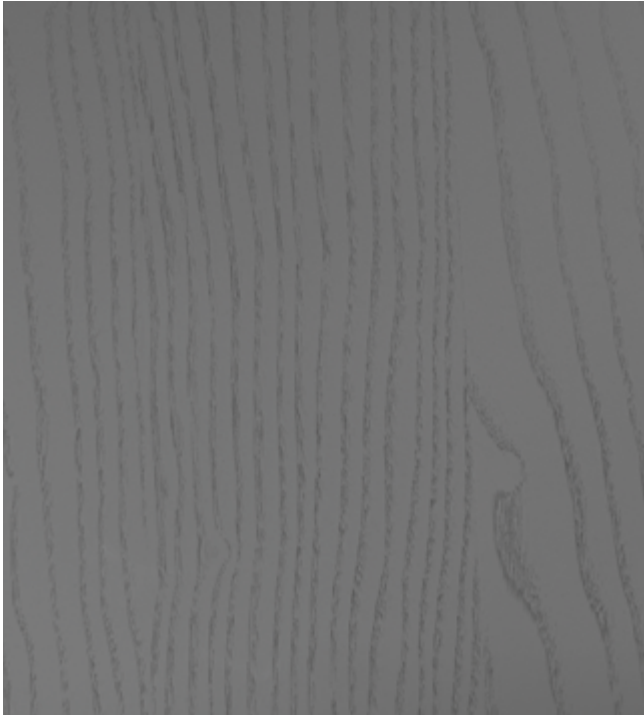
My Chair – shell & legs (lacquered birch veneer)



Smoked Oak
Ace chair – legs (painted and lacquered oak)
Herit chair – legs (painted and lacquered oak)
My Chair – shell & legs (painted and lacquered ash veneer)
Form café table – tabletop (painted and lacquered oak veneer)



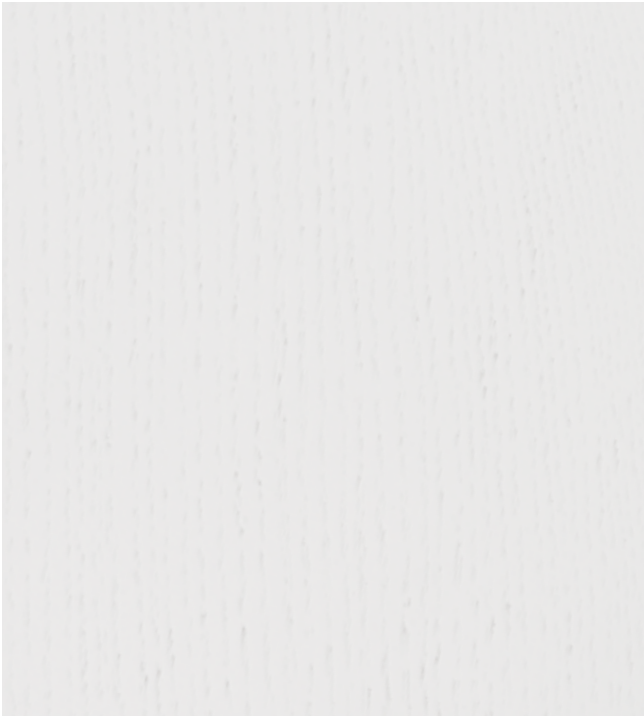
Black
Studio chair – shell (painted and lacquered ash veneer)
Form chair – legs (painted and lacquered oak)
Ace – legs (painted and lacquered oak)
My Chair – shell & legs (painted and lacquered ash veneer)
Just chair – shell & legs (painted and lacquered ash veneer)
Knot chair – shell & legs (painted and lacquered ash)
Pad – shell (painted and lacquered ash veneer)
Form café table – tabletop (painted oak veneer)



Grey
My Chair – shell & legs (painted and lacquered ash veneer)



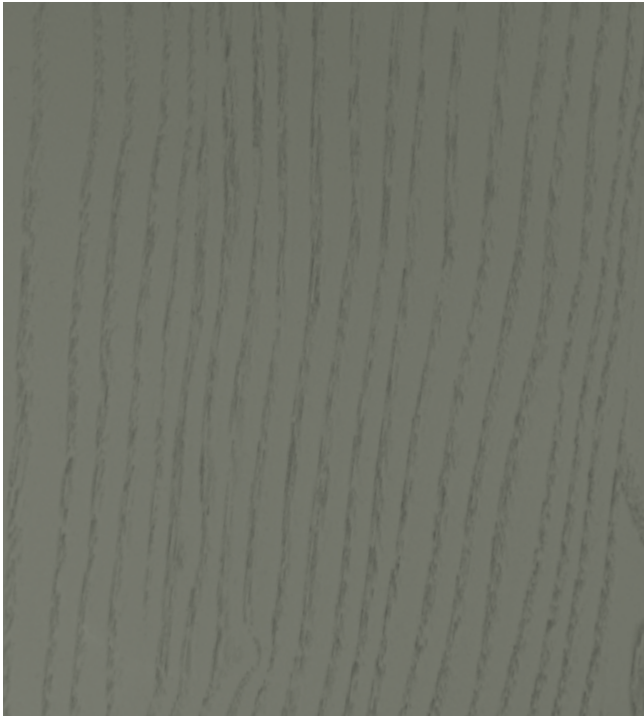
Oyster
My Chair – shell & legs (painted and lacquered ash veneer)



White
My Chair – shell & legs (painted and lacquered ash veneer)
Knot chair – shell & legs (painted and lacquered ash)



Light Grey
My Chair – shell & legs (painted and lacquered ash veneer)
Studio chair – shell (painted and lacquered ash veneer)



Dusty Green
My Chair – shell & legs (painted and lacquered ash veneer)



Moss
My Chair – shell & legs (painted and lacquered ash veneer)

Right:
My Chair Sandstone

Below:
Studio chair black steel White



Sandstone
My Chair – shell & legs (painted and lacquered ash veneer)



Brown
Studio chair – shell (painted and lacquered ash veneer)



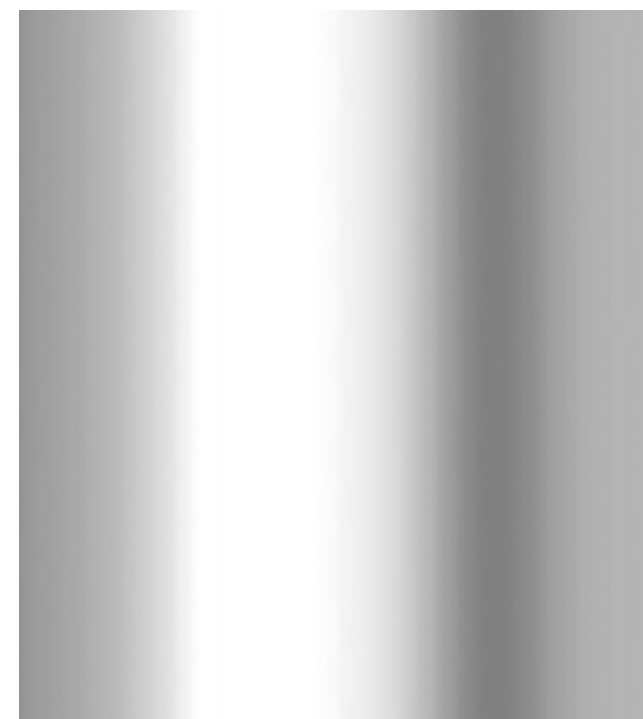
Green
Studio chair – shell (painted and lacquered ash veneer)

Metal

Metal is a strong and maintenance-friendly choice of material and provides a striking contrast to wood and other materials. We use cold-steel, stainless steel and aluminum alloy in our furniture.

Environmental profile:

We use powder coating, PVD or Chrome coating. Powder coating does not contain any VOC (Volatile Organic compounds). Coatings meet the REACH regulation. During 2020, we will change our production methods using only Chrome 3 when electroplating.



Aluminum

Era – swivel (aluminum)
Form chairs – swivel (aluminum)
Hyg – swivel (aluminum)
Sum – legs (aluminum)



Chrome

Era – legs (chrome)
Form chair – legs (chrome)
Just chairs – legs (chrome)
My Chair – legs (chrome)



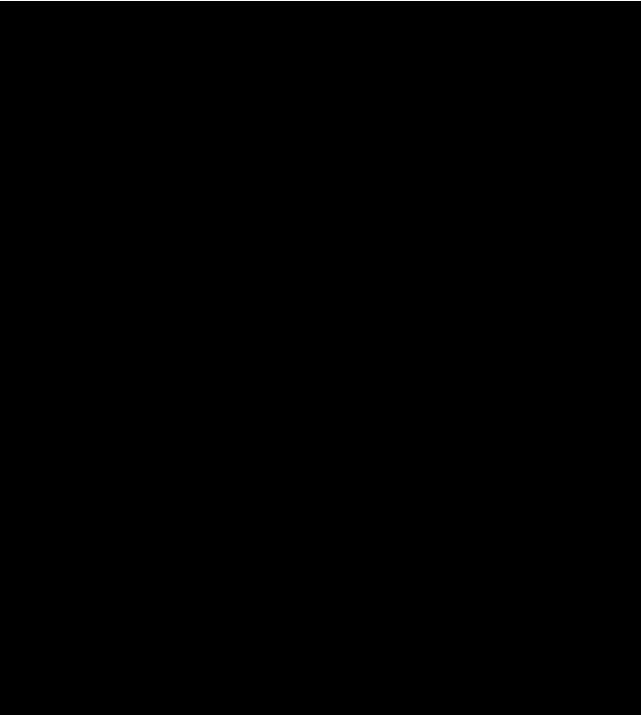
Brass

Ace – legs (brass plated steel)
Form chair – legs (brass plated steel)

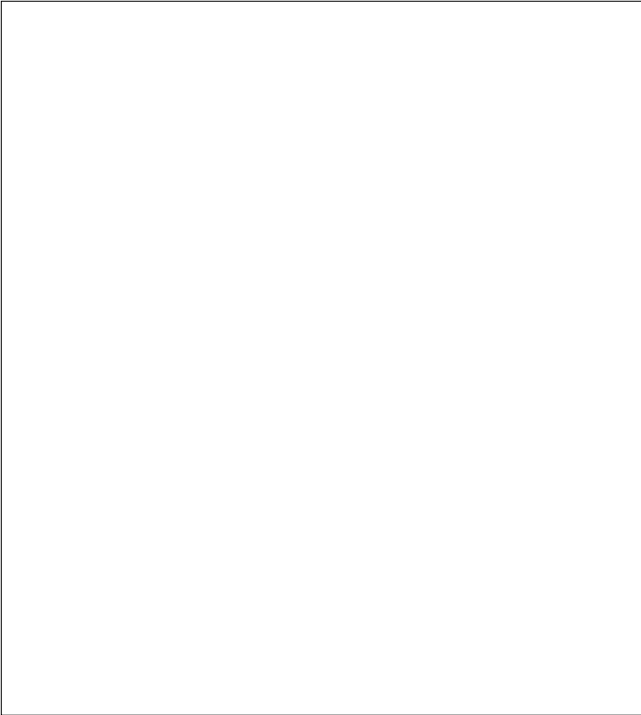


Black Metallic

Ace – legs (plated steel)



Black
Form chair – legs (lacquered steel)
Just chair – legs (lacquered steel)
Era – legs (lacquered steel)
Hyg chair – legs (lacquered steel)
Pad – legs (lacquered steel)
Studio chair – legs (lacquered steel)
Sum – legs (lacquered steel)



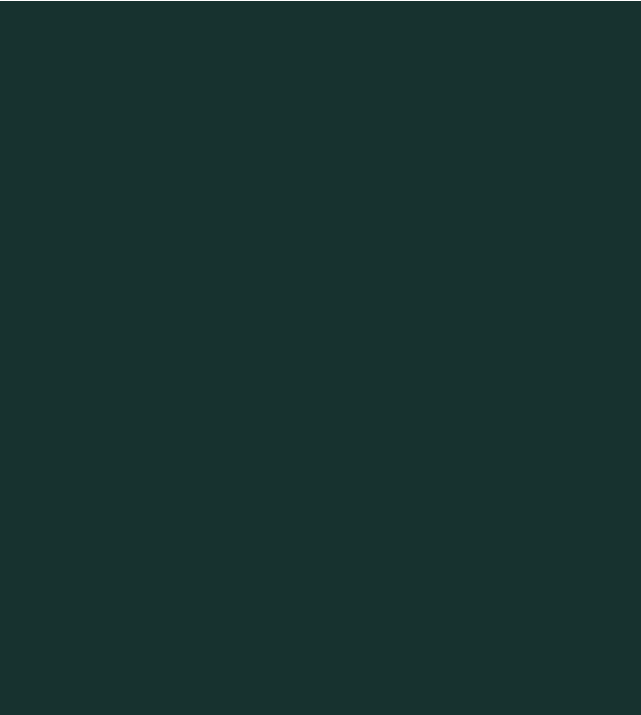
White
Form – legs (lacquered steel)
Hyg chairs – legs (lacquered steel)



Grey
Form – legs (lacquered steel)



Blue
Form – legs (lacquered steel)



Green
Form – legs (lacquered steel)



Red
Form – legs (lacquered steel)



Grey
Hyg – legs (lacquered steel)



Olive
Hyg – legs (lacquered steel)



Sand
Hyg – legs (lacquered steel)

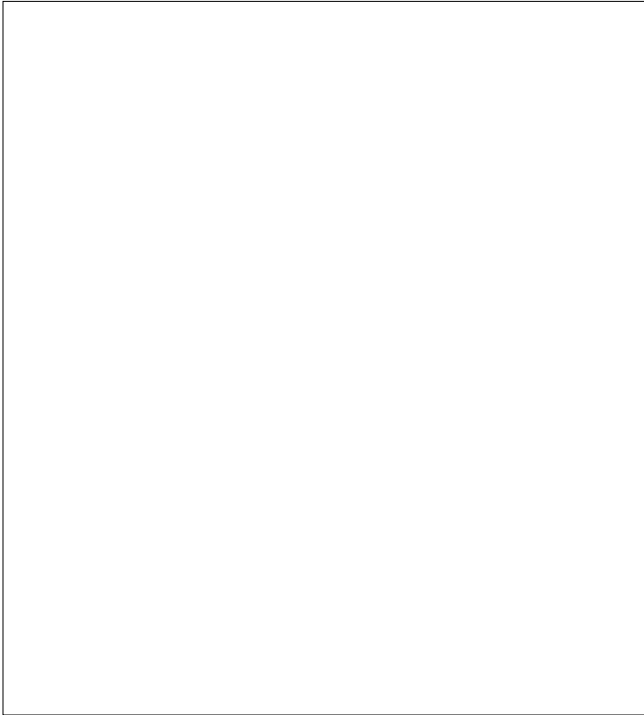


Grey
Pad – legs (lacquered steel)

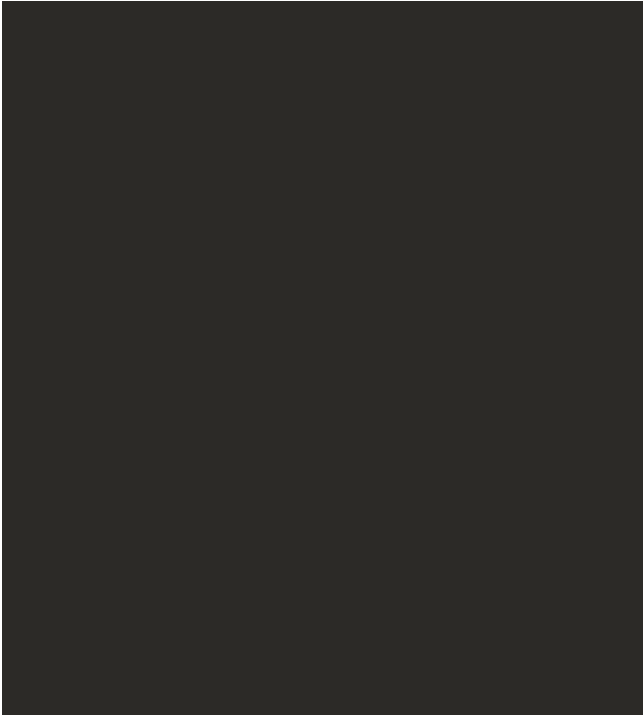


Polypropylene

We use recyclable virgin polypropylene in our furniture production. The pure polypropylene offers high resistance and durability, which ensure a long lifetime for the product.



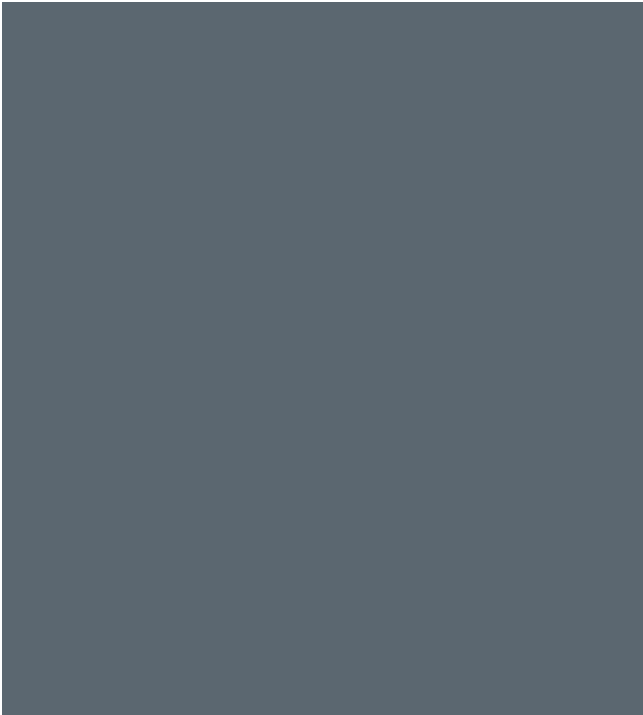
White
Form – shell (polypropylene)
Hyg – shell (polypropylene)
Herit – shell (polypropylene)



Black
Form – shell (polypropylene)
Hyg – shell (polypropylene)
Herit – shell (polypropylene)

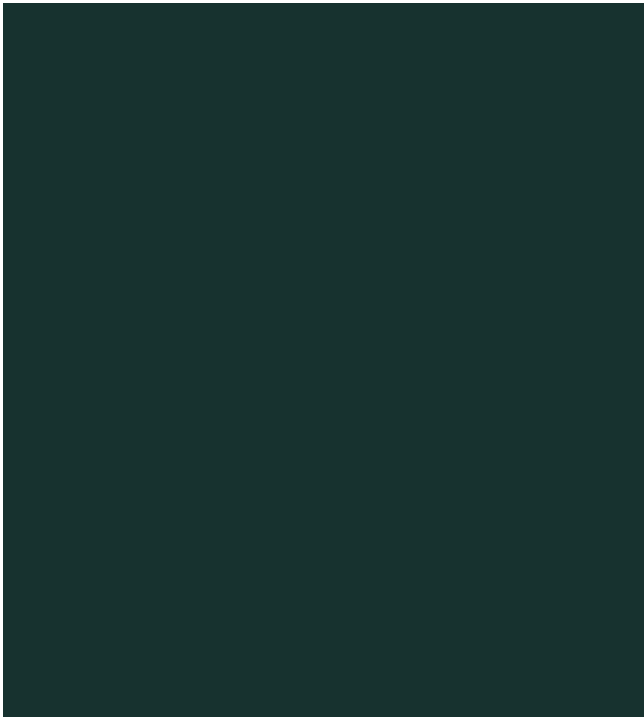


Grey
Form – shell (polypropylene)



Blue
Form – shell (polypropylene)

Environmental profile:
Polypropylene consumes low energy during production.
It produces low carbon dioxide emissions when compared to other polymers.
It can be recycled several times and be used in many different applications.
Recycling or reclamation of the PP and other polymers should always be encouraged when possible. Our chairs are clearly marked with the material and recycling symbol.



Green
Form – shell (polypropylene)



Red
Form – shell (polypropylene)



Grey
Hyg – shell (polypropylene)



Olive
Hyg – shell (polypropylene)



Hyg chair



Sand
Hyg – shell (polypropylene)
Herit – shell (polypropylene)



Grey
Herit – shell (polypropylene)



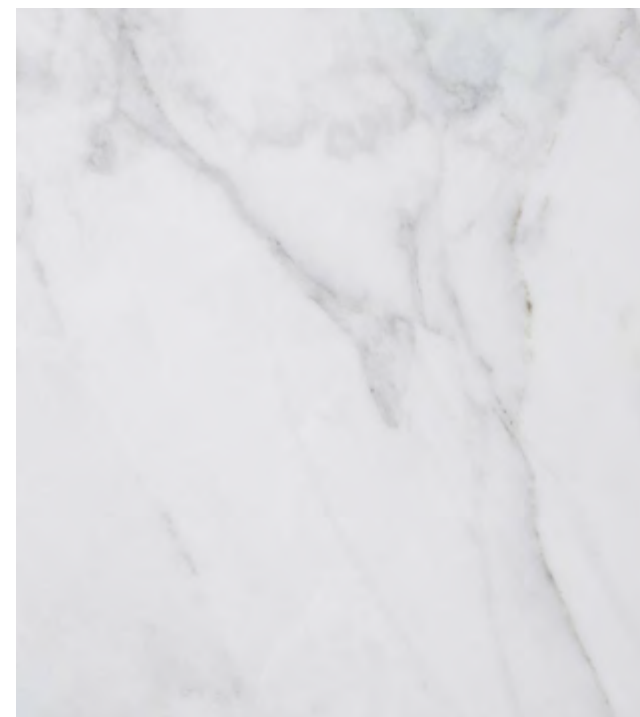
Dusty Green
Herit – shell (polypropylene)

Available on:
Hyg Chair – shell

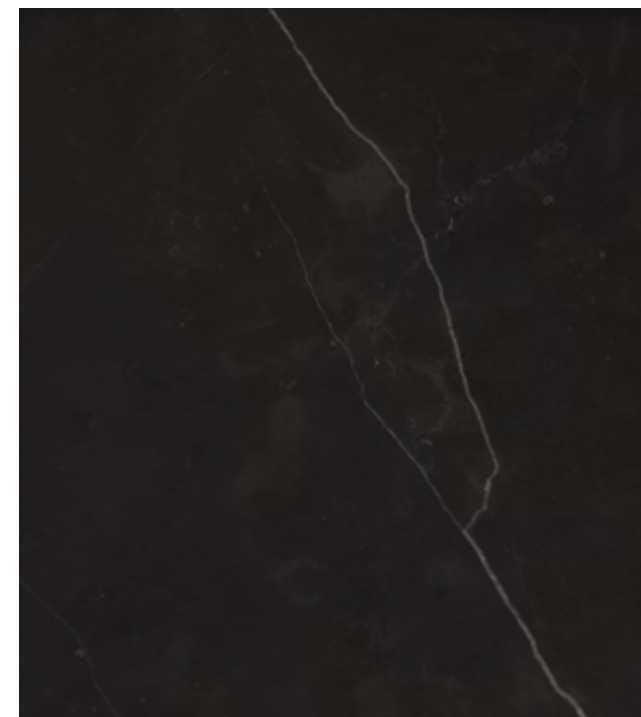


Stone

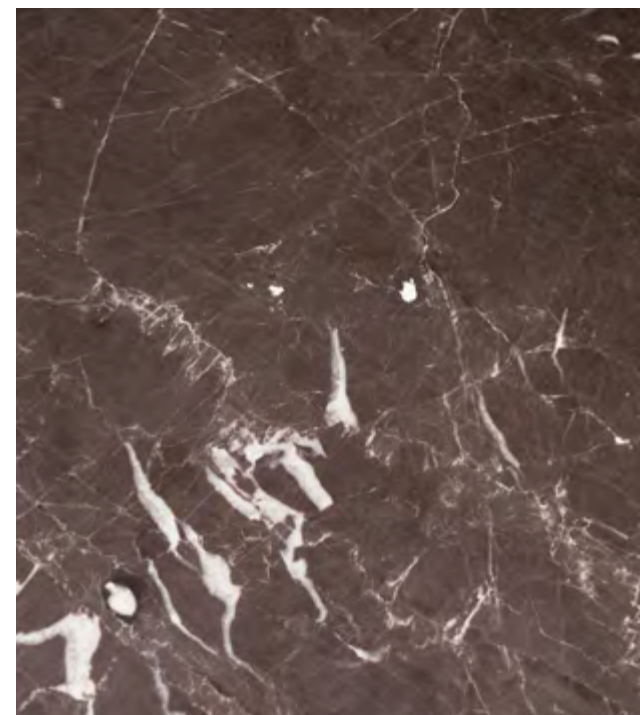
Stone materials have an innate beauty bestowed upon them by nature with natural variations making each piece unique in color and composition.



White
Form café table – tabletop (marble)



Black
Form café table – tabletop (marble)



Coffee
Form café table – tabletop (marble)



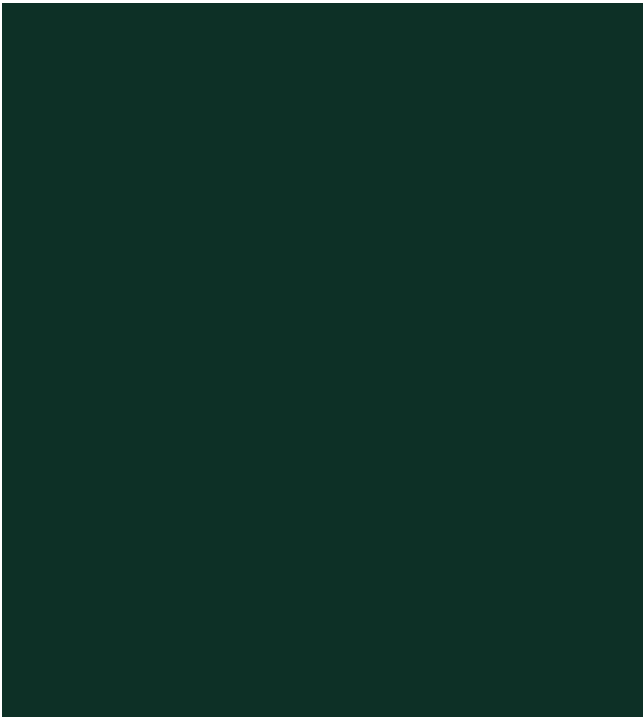
Sand
Form café table – tabletop (marble)

Linoleum

Linoleum is a natural material known to have anti-bacterial and self-healing properties. Our linoleum surfaces are made with Forbo’s furniture linoleum, which is comfortable to touch and has a beautiful matte finish.



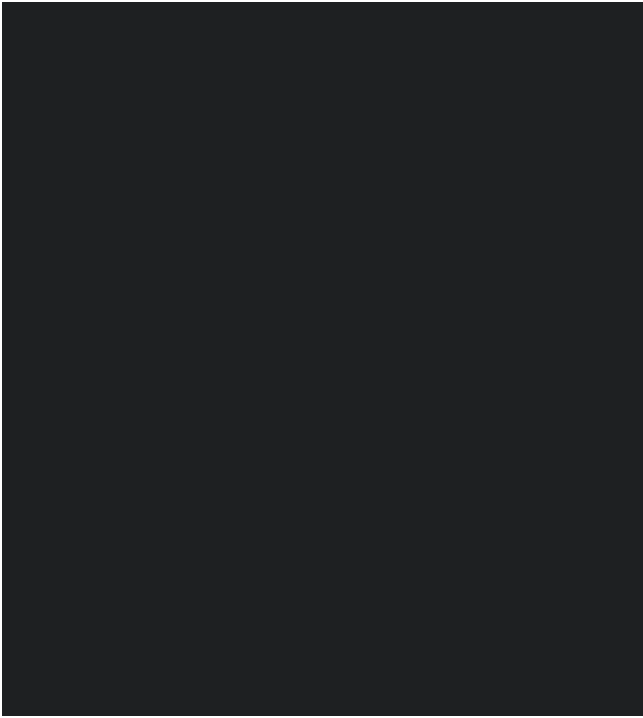
Salsa
Slice table – tabletop (linoleum)
Form table – tabletop (linoleum)



Conifer
Slice table – tabletop (linoleum)
Form table – tabletop (linoleum)



Smokey Blue
Slice table – tabletop (linoleum)
Form table – tabletop (linoleum)

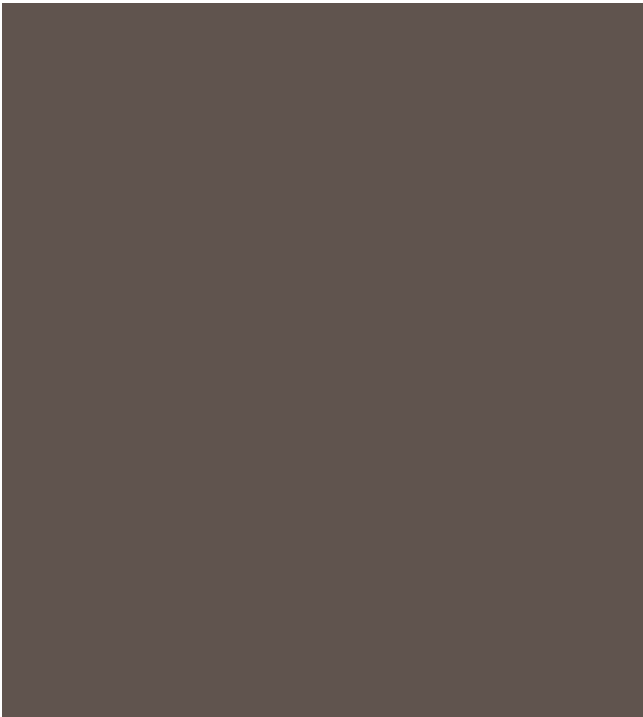


Nero
Slice table – tabletop (linoleum)
Form table – tabletop (linoleum)

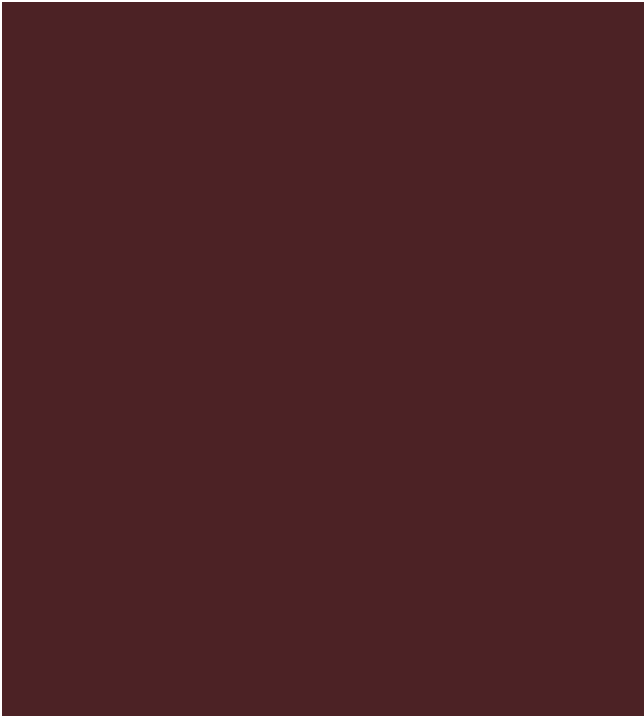
Environmental profile:
Linoleum is a natural product with low emission.



Ash Linoleum
Slice table – tabletop (linoleum)
Form table – tabletop (linoleum)



Mauve
Slice table – tabletop (linoleum)



Burgundy
Slice table – tabletop (linoleum)

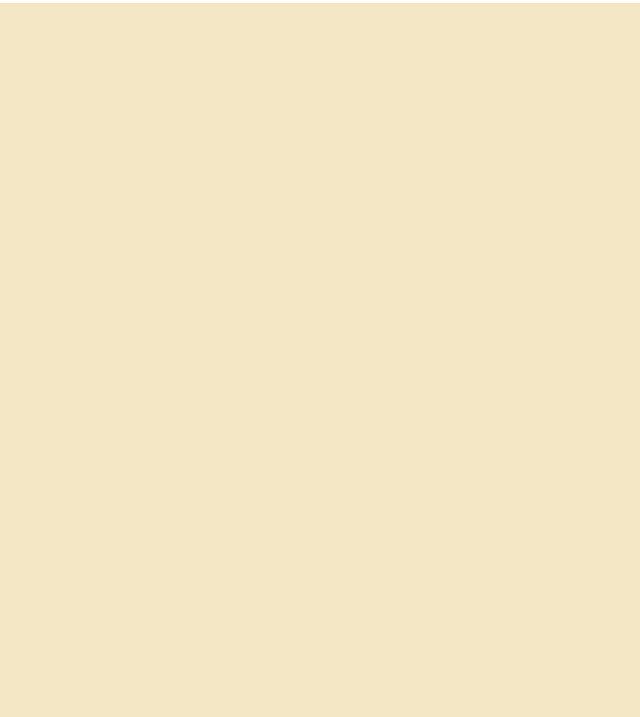


Orange Blast
Slice table – tabletop (linoleum)





Powder
Slice table – tabletop (linoleum)



Pearl
Slice table – tabletop (linoleum)



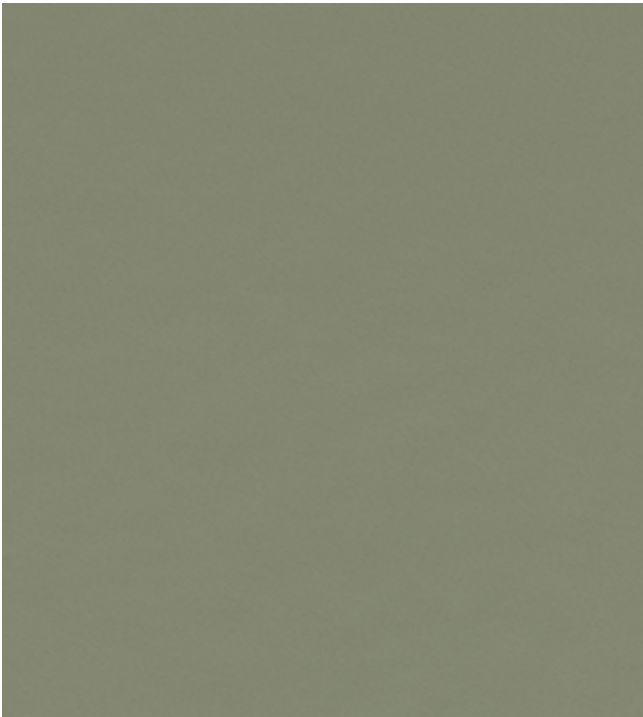
Midnight Blue
Slice table – tabletop (linoleum)



Aquavert
Slice table – tabletop (linoleum)



Pistachio
Slice table – tabletop (linoleum)



Olive
Slice table – tabletop (linoleum)



Spring Green
Slice table – tabletop (linoleum)



Iron
Slice table – tabletop (linoleum)



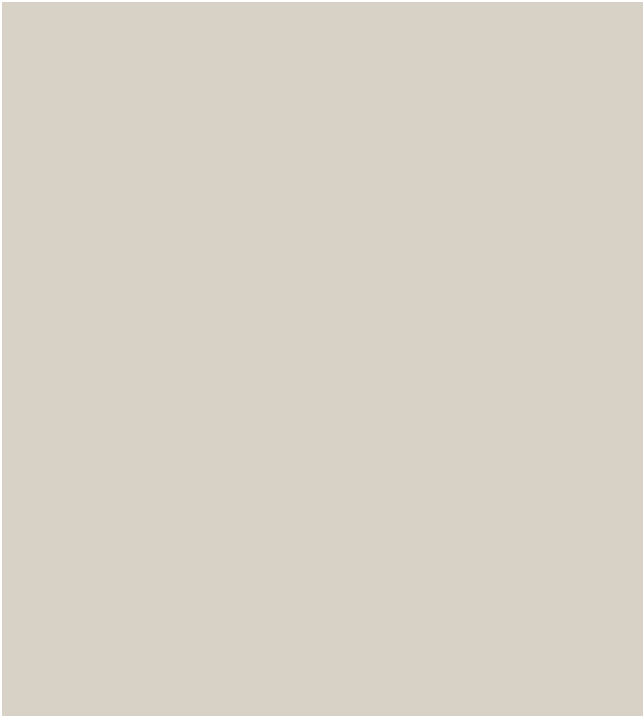
Vapour
Slice table – tabletop (linoleum)



Pewter
Slice table – tabletop (linoleum)



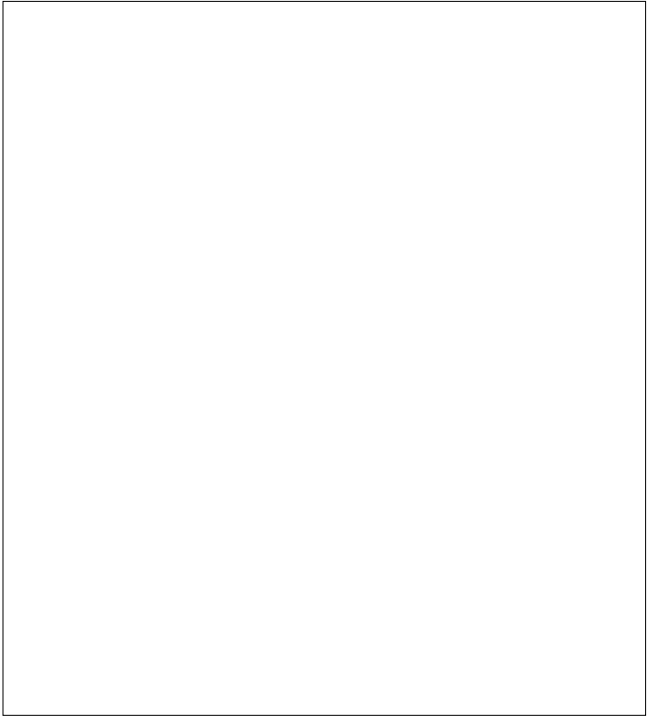
Pebble
Slice table – tabletop (linoleum)



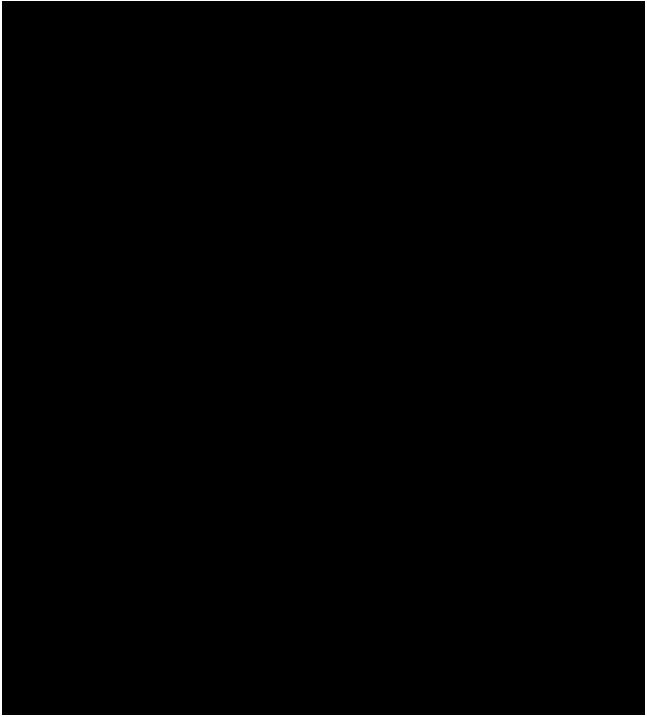
Mushroom
Slice table – tabletop (linoleum)

Laminate

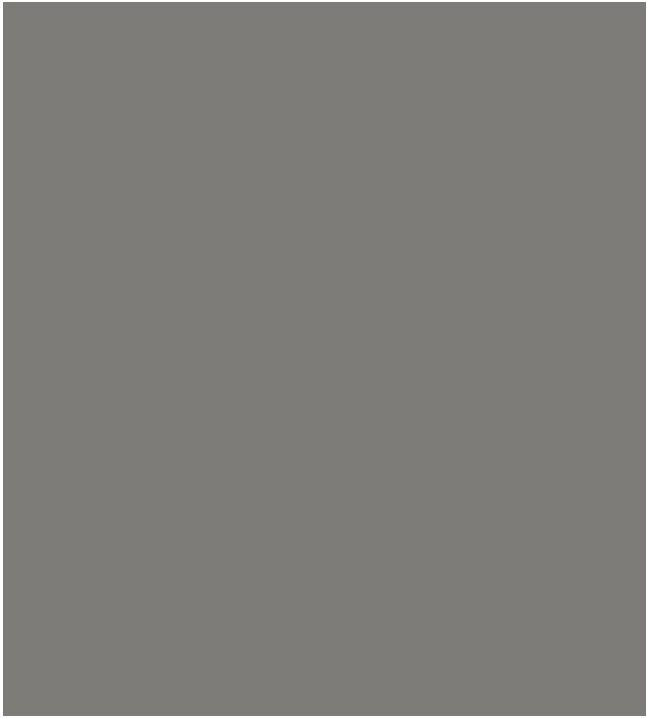
Our laminate tabletops are made with Fenix laminate, which has a silky-soft surface and neat technical properties such as low light reflectivity and anti-fingerprint.



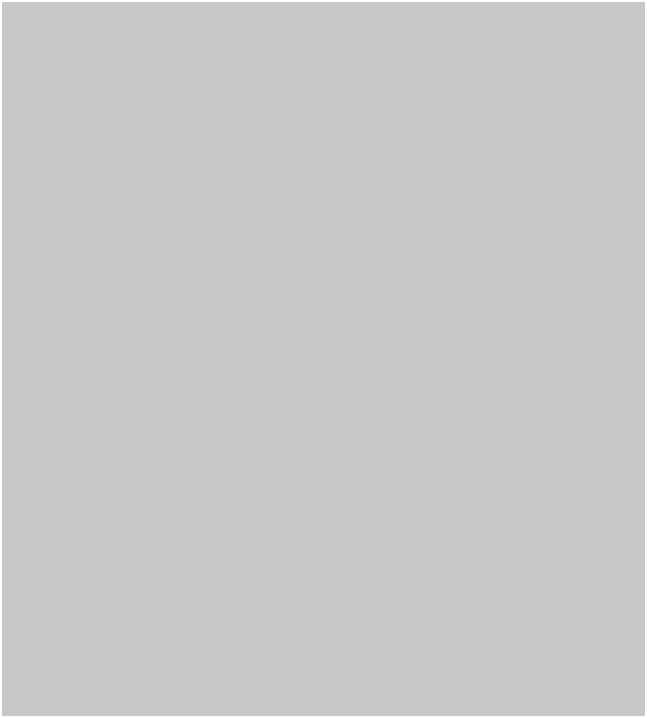
White
Union table – tabletop (laminate)
Journal table – tabletop (laminate)



Black
Union table – tabletop (laminate)
Journal table – tabletop (laminate)



Grey
Union table – tabletop (laminate)



Grey
Journal table – tabletop (laminate)

Environmental profile:
Fenix is certified to Greenguard GOLD and M1 according to Building Information Foundation RTS (FENIX as a product designed for use in indoor spaces meets strict chemical emissions limits)

Care	Cleaning	
Textiles	Avoid long-term exposure to direct sunlight and other light sources as the textile might inevitably fade.	Clean with textile or upholstery cleaner.
	Rope sofa: Adjust your sofa upon receipt. Straighten fabric on all modules and move piping to the right position. Press fabric down between each of the modules and between the backrest and the seat.	Frequent vacuuming with a soft fitting is recommended to preserve color and appearance. Stains should be removed immediately to avoid permanent damage.
Leather	Avoid placing the leather in direct sunlight or extreme heat.	Dust using a vacuum cleaner with a soft brush.
	Avoid soaking the leather or any contact with sharp objects. Absorb any spills immediately, using a clean, dry cloth. Dust and clean regularly according to instructions.	Clean using the foam from soap flakes. Use a 1/2 deciliter of soap flakes to 1 liter of water. Whip the soap flakes into hot water. When the water becomes room temperature, the foam must be applied all over the leather with a soft cloth. Only use the foam and avoid soaking the leather. When the leather is dry, polish it with a soft, dry cotton cloth. Never use detergents, ammonia, oils, polish, varnish, etc.
Woods Veneer Solid Lacquered Stained	Wipe any spills as soon as they occur to avoid them soaking in.	Clean with a damp cloth.
	Never place hot items directly on the tabletop.	Never use abrasive cleaners, steel wool or polish.
Polypropylene	Avoid placing the furniture in direct sunlight or close to strong heat sources.	Clean the surface using a damp cloth wrung in a solution of water and neutral detergent. Afterwards, wipe the surface using a clean dry cloth.
Metals Aluminum Chrome Powder coated steel	Powdercoated steel: Do not expose to extreme UV light to prevent color from fading.	Clean with a damp cloth wrung in a solution of water and neutral detergent.
		Avoid using scouring cream or scouring pads as they may scratch the surface.

Care	Cleaning	
Marble	Wipe any spills as soon as they occur to avoid them from soaking in.	Clean using a cleaning soap for all types of natural stone. Avoid the use of all-purpose cleaners and other degreasing detergents as well as substances containing acids.
	Marble tabletops can be maintained with mild soap or soap flakes, which forms a light protective film on the surface. Use mild soap or soap flakes over time to make the surface more resistant to spots and give it a silky matte look.	
Linoleum	We recommend using coasters under damp or colored items to avoid permanent stains.	Only use a PH-neutral cleaning product on linoleum as alkaline detergents may deplete the linoleum.
	Never place hot items directly on the linoleum tabletop. Use linoleum care regularly to maintain the surface. Wipe any spills as soon as they occur to avoid them from soaking in.	Clean with a damp cloth wrung in a solution of water and a detergent made especially for linoleum. Remove soap residue immediately afterwards, using a clean, dry cloth. Stains can be removed carefully using white spirit (minerals turpentine) or a damp nano-sponge with warm water or a linoleum product. Please note that the nano-sponge should not be used when dry.
Laminate	Never place hot items directly on the laminate.	Clean with a damp cloth wrung in a solution of water and all-purpose cleaner or household ammonia. Avoid using abrasive cleaners.
		Remove soap residue immediately afterwards, using a clean, dry cloth. Stains can be removed gently with a clean, damp cloth or nano-sponge wrung in warm water with 1 part vinegar to 10 parts water.

It's nice to be home

